

 4  2  2



# Oxford Road, *Windsor*

OSBORNE HEATH



# A four bedroom, two bathroom end-of-terrace house with driveway parking in Windsor town centre.

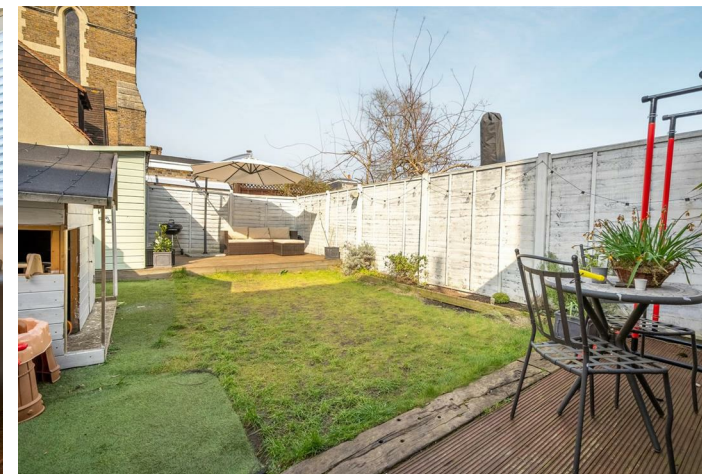
The ground floor has been extended to the rear to create an open-plan kitchen with feature island, sky lights, living and dining areas plus bi-folding doors out to the garden. There is also a formal living room and a downstairs WC.

The first floor has two double bedrooms with built-in wardrobes, a third bedroom used as a study, and a family bathroom. The loft has been converted into the principal bedroom with Juliet balcony and an en suite shower room.

To the front of the house is driveway parking, and to the rear is a garden with side access.

Oxford Road is a residential road of period properties in Windsor town centre. Windsor has a wide range of shops and restaurants as well as the Castle, Great Park, Racecourse and Legoland. Nearby train stations include Windsor & Eton Central and Windsor & Eton Riverside where trains run to London Paddington (via Slough) and London Waterloo. Nearby schools include Eton, The Kings House, Oakfield, The Queen Anne, St Edwards, Trevelyan, Trinity St Stephen, Upton House, Windsor Boys and Windsor Girls. Windsor is also convenient for the M4, M25 and Heathrow Airport.

EPC rating D. Council Tax band E.



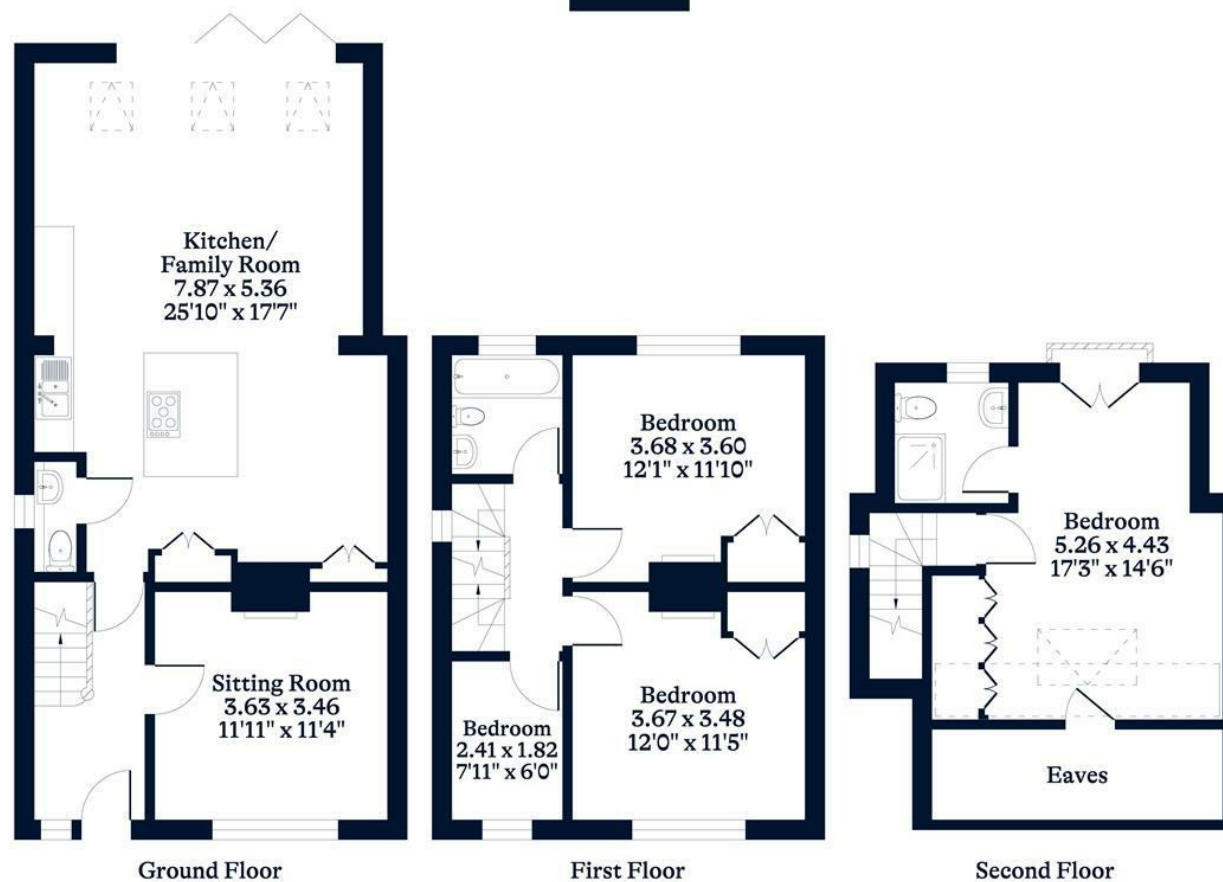




**APPROXIMATE FLOOR AREA**  
House - 124.90 sq m - 1344 sq ft  
(Gross Internal Area)



**NOT TO SCALE**  
This plan is for illustration purposes only



This plan is for layout guidance only. Not drawn to scale unless stated. Windows and door openings are approximate. Whilst every care is taken in the preparation of this plan, please check all dimensions, shapes and compass bearings before making any decisions reliant upon them.

OSBORNEHEATH.CO.UK