

 5  5  3



Winkfield Road, *Windsor*

OSBORNE HEATH

A gated five bedroom, three bathroom family home with a double garage, views over Windsor Great Park, and no onward chain.

Lychmere House is being offered to the market for the first time since it was built by Berkeley Homes in 1991.

Downstairs there is a double aspect living room with fireplace, formal dining room, family room adjoining the kitchen which has a dining area, study, utility room and a downstairs WC.

Upstairs, the master suite has built-in wardrobes and a large en suite. There is a second en suite bedroom and three further bedrooms, all with built-in wardrobes, plus a family bathroom.

The front of the house is set back from the road and has a walled front garden, gated driveway parking and a double garage with an electronically operated door. The garden wraps around the house and is well stocked with trees and mature evergreen shrubs which have been professionally maintained.

Lychmere House is on the corner of St Leonards Hill, in the grounds of the listed manor house, St Leonards Dale. Windsor has a wide range of shops and restaurants as well as the Castle, Great Park, Racecourse and Legoland. Nearby train stations include Windsor & Eton Central and Windsor & Eton Riverside, giving easy access to London Paddington (via Slough) and London Waterloo. Local schools include Braywood, The Kings House, Oakfield, The Queen Anne, St Edwards, Trevelyan, Trinity St Stephen, Upton House, Eton, and Windsor Boys and Windsor Girls. Windsor is also convenient for the M4, M25 and Heathrow Airport.

EPC rating D. Council Tax band G.

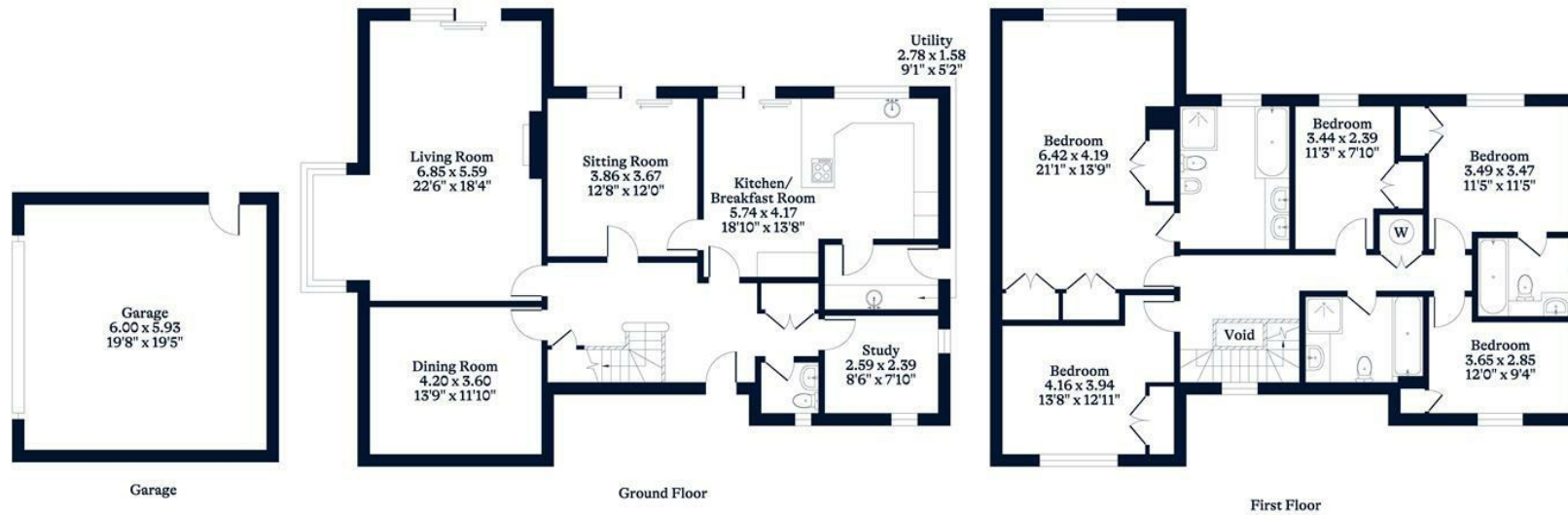




APPROXIMATE FLOOR AREA
House - 231.95 sq m - 2497 sq ft
Garage - 35.58 sq m - 383 sq ft
Total - 267.53 sq m - 2880 sq ft
(Gross Internal Area)



NOT TO SCALE
This plan is for illustration purposes only



This plan is for layout guidance only. Not drawn to scale unless stated. Windows and door openings are approximate. Whilst every care is taken in the preparation of this plan, please check all dimensions, shapes and compass bearings before making any decisions reliant upon them.

OSBORNEHEATH.CO.UK