

 4  3  2



North Street, *Winkfield*

OSBORNE HEATH

A modern four double bedroom, two bathroom detached house with three reception rooms, driveway parking and no onward chain.

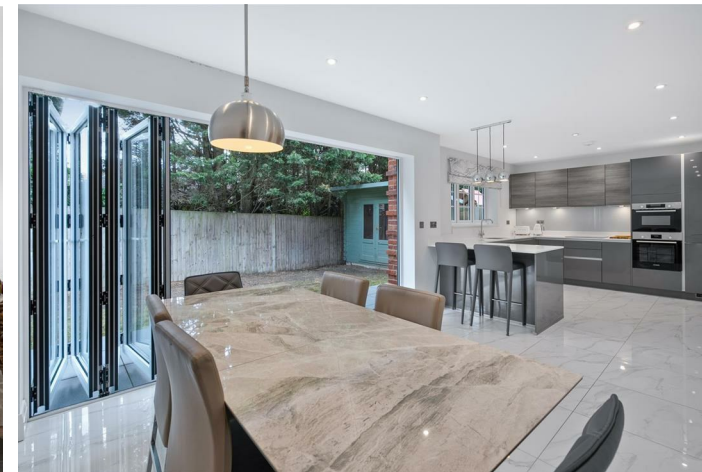
On the ground floor there is a living room with a log-burner, study, modern kitchen featuring a breakfast bar and dining area with bi-folding doors out to the garden, a utility, and a downstairs WC.

On the first floor there are four double bedrooms, an en suite shower room to the main bedroom and a family bathroom.

To the front of the house there is driveway parking for several vehicles and side access to the garden.

Oaklands is located on North Street, close to the Royal County of Berkshire Polo Club. Other local places of interest include Ascot Racecourse, The Berkshire Golf Club, Guards Polo Club, Legoland, Sunningdale Golf Club, Wentworth Club, Windsor Castle and Windsor Great Park. Nearby schools include Ascot Heath, Charters, Cheapside, Cranbourne, LVS and Papplewick. The nearest train station is Ascot where services run to London Waterloo, Reading and Guildford. By road Winkfield is convenient for the M3, M4, M25 and Heathrow Airport.

EPC rating B. Council Tax band G.

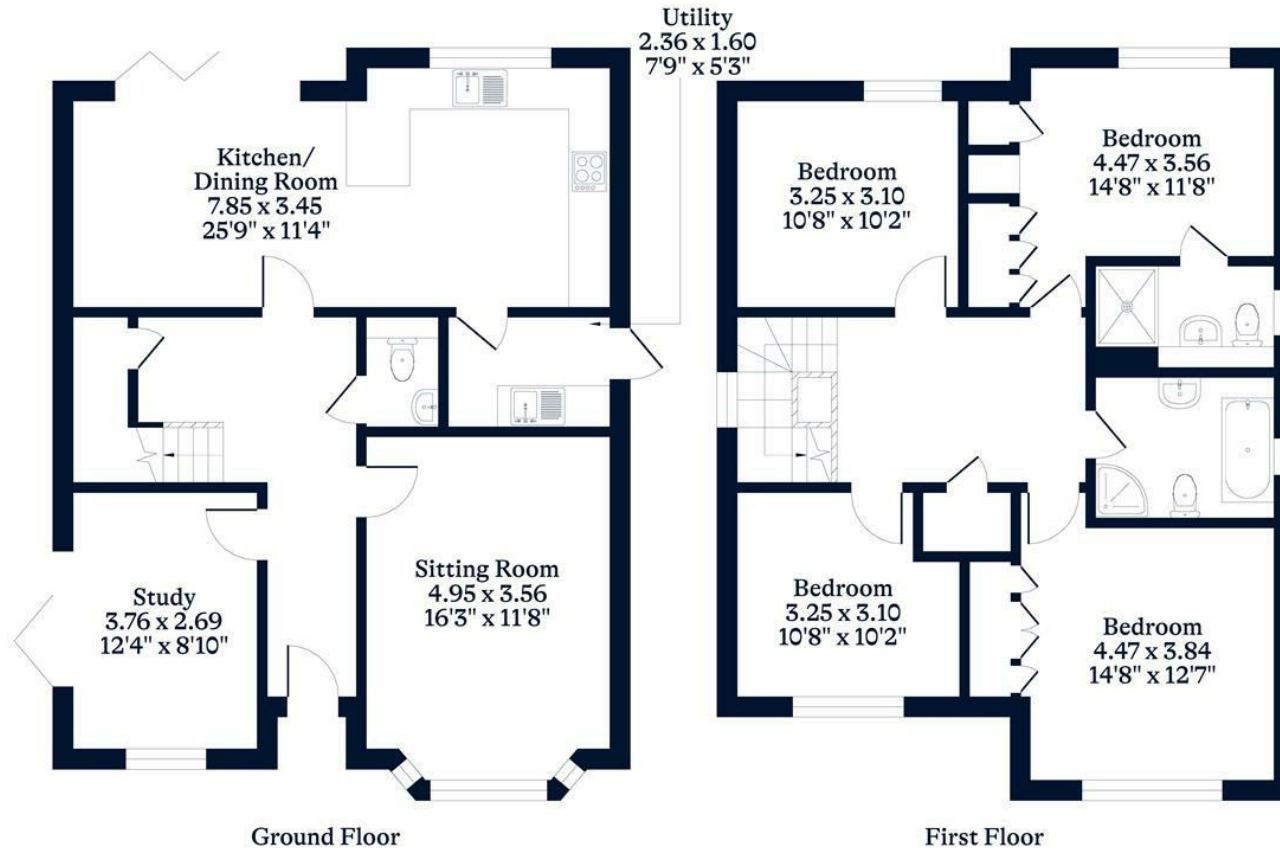




APPROXIMATE FLOOR AREA
House - 149.90 sq m - 1614 sq ft
(Gross Internal Area)



NOT TO SCALE
This plan is for illustration purposes only



This plan is for layout guidance only. Not drawn to scale unless stated. Windows and door openings are approximate. Whilst every care is taken in the preparation of this plan, please check all dimensions, shapes and compass bearings before making any decisions reliant upon them.

OSBORNEHEATH.CO.UK