

 5  4  4



Jacob Close, *Windsor*

OSBORNE HEATH

An extended five bedroom, four bathroom semi-detached house with four reception rooms and a self-contained annexe.

The ground floor has a living room, dining room, family room, kitchen, and a shower room. There is a contained annexe which can be accessed via the main house or the side passageway. The annexe comprises a living room and kitchen, bedroom and shower room.

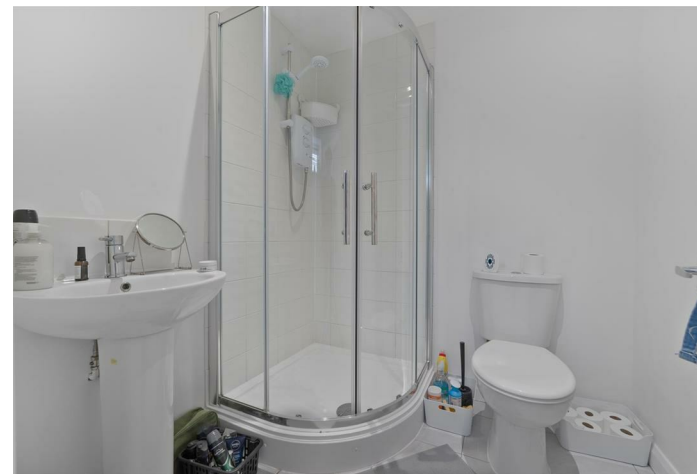
The first floor has the principal bedroom with en suite shower room, three further bedrooms and a family bathroom.

Outside, the block paved driveway provides off road parking for numerous cars and a side gate. The west facing rear garden has a full width patio, an area of lawn and two garden sheds.

Solar Panels were installed by Octopus Energy in 2023 with a 2.6kw battery storage. In addition, a Heat Pump (9kw) was installed in June 2024.

The property is situated to the west of Windsor, close to a range of shopping facilities including Tesco and Aldi, with additional facilities in Windsor town centre. Windsor has a wide range of shops and restaurants as well as the Castle, Great Park, Racecourse and Legoland. Nearby train stations include Windsor & Eton Central and Windsor & Eton Riverside where trains run to London Paddington (via Slough) and London Waterloo, and there is bus stop close by including the GoToGate bus service to Heathrow Terminal 5. The area is well served by a number of state, private and international schools and there are various parks close by including Sutherland Grange. Windsor is also convenient for the M4, M25 and Heathrow Airport.

EPC rating A. Council Tax band E.

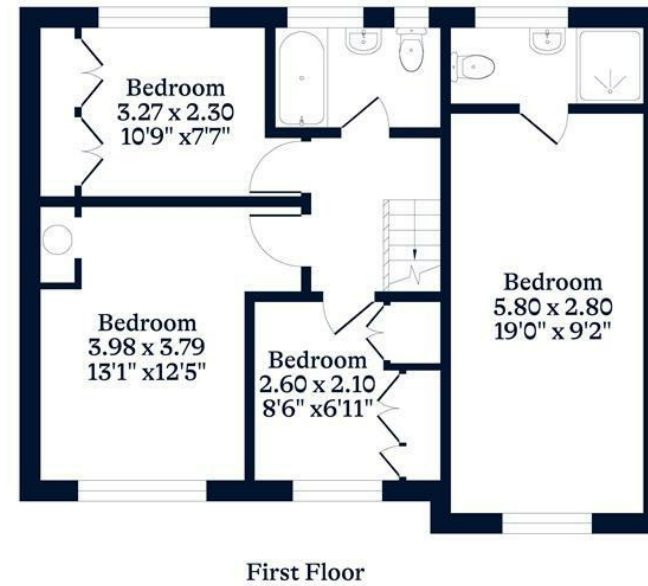
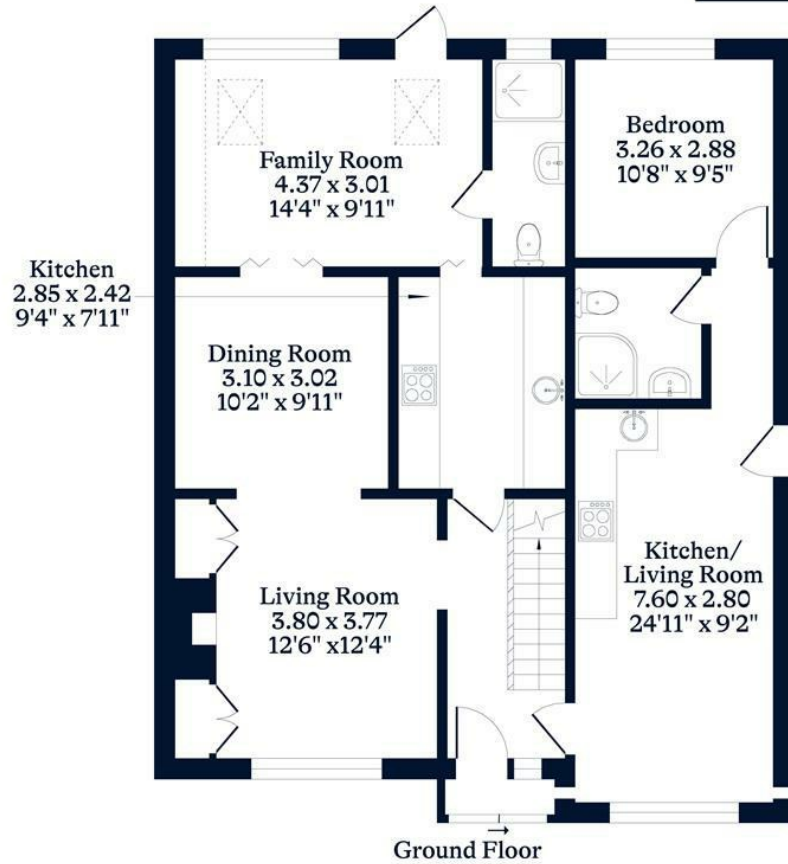






APPROXIMATE FLOOR AREA
House - 148.76 sq m - 1601 sq ft
(Gross Internal Area)

NOT TO SCALE
This plan is for illustration purposes only



This plan is for layout guidance only. Not drawn to scale unless stated. Windows and door openings are approximate. Whilst every care is taken in the preparation of this plan, please check all dimensions, shapes and compass bearings before making any decisions reliant upon them.

OSBORNEHEATH.CO.UK