

5 3 3

O  
|  
H



# Winkfield Road, *Windsor*

OSBORNE HEATH

# An elegant five bedroom detached period home with gardens, carriage driveway with electric gates and a useful summer room with annexe potential.

A charming Georgian detached house with a latter Victorian extension boasting a wealth of character features, with a modern touch.

The ground floor has a sitting room with a large bay window and fireplace, double aspect study, kitchen/breakfast room which is open-plan to the dining room/living room with twin French doors opening on to the garden, and a downstairs WC.

On the first floor there is a split-level landing, five double bedrooms, two en suite shower rooms and a period style family bathroom.

Outside, the property is approached via a gated carriage driveway providing ample off road parking, an EV charging point and a single garage. The gardens are lawned and have a paved terrace with built-in bar and there is a versatile summer room/potential annexe.

Windsor has a wide range of shops and restaurants as well as the Castle, Great Park, Racecourse and Legoland. Nearby train stations include Windsor & Eton Central and Windsor & Eton Riverside, giving easy access to London Paddington (via Slough) and London Waterloo. The area is served by a number of well-regarded state schools including The Royal School, Oakfield, Queen Anne First School, St Edwards Middle School, Trevelyan, Windsor Boys and Windsor Girls. There are also a number private schools such as St. George's Windsor Castle, Upton House, St. George's, St. Mary's, Heathfield, Papplewick, Lambrook and Eton. Windsor is also convenient for the M4, M25, M3 and Heathrow Airport.

EPC rating D. Council Tax band G.

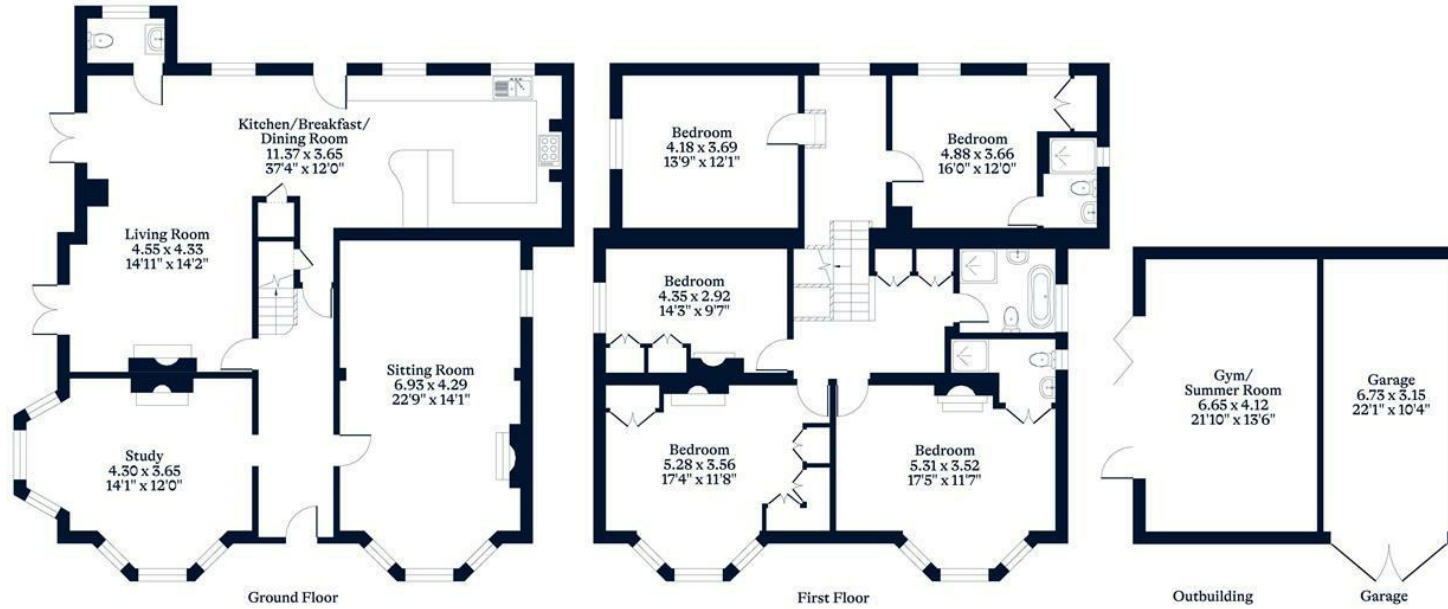




**APPROXIMATE FLOOR AREA**  
House - 254.20 sq m - 2736 sq ft  
Outbuilding - 27.00 sq m - 291 sq ft  
Garage - 20.80 sq m - 224 sq ft  
Total - 302.00 sq m - 3251 sq ft  
(Gross Internal Area)



**NOT TO SCALE**  
This plan is for illustration purposes only



This plan is for layout guidance only. Not drawn to scale unless stated. Windows and door openings are approximate. Whilst every care is taken in the preparation of this plan, please check all dimensions, shapes and compass bearings before making any decisions reliant upon them.

[OSBORNEHEATH.CO.UK](http://OSBORNEHEATH.CO.UK)