

🛏️ 2 🛋️ 1 🛁 1



# North Street, *Windsor*

OSBORNE HEATH

## A Victorian cottage located on the outskirts of Windsor in the parish of Winkfield, with two bedrooms, first floor bathroom and driveway parking.

The ground floor has a living room with fireplace and doors opening into the kitchen which has stairs to the first floor and a stable door leading out to the rear garden.

On the first floor there are two bedrooms and a bathroom with a white suite.

Outside, there is driveway parking for one car and a rear garden with a shingle patio, area of lawn and a timber garden shed.

Wesley Place is a row of Victorian cottages on North Street, which is situated in the village of Winkfield, in-between Windsor and Ascot. Nearby places of interest include Ascot Racecourse, Coworth Park, Legoland, The Lexicon, Royal Berkshire Polo Club, Swinley Forest, Wentworth Golf Club, Windsor Castle and Windsor Great Park. Winkfield is also convenient for the M3, M4, M25 and Heathrow Airport and the area also has a selection of well-regarded state, private and international schools.

EPC rating D. Council Tax band C.

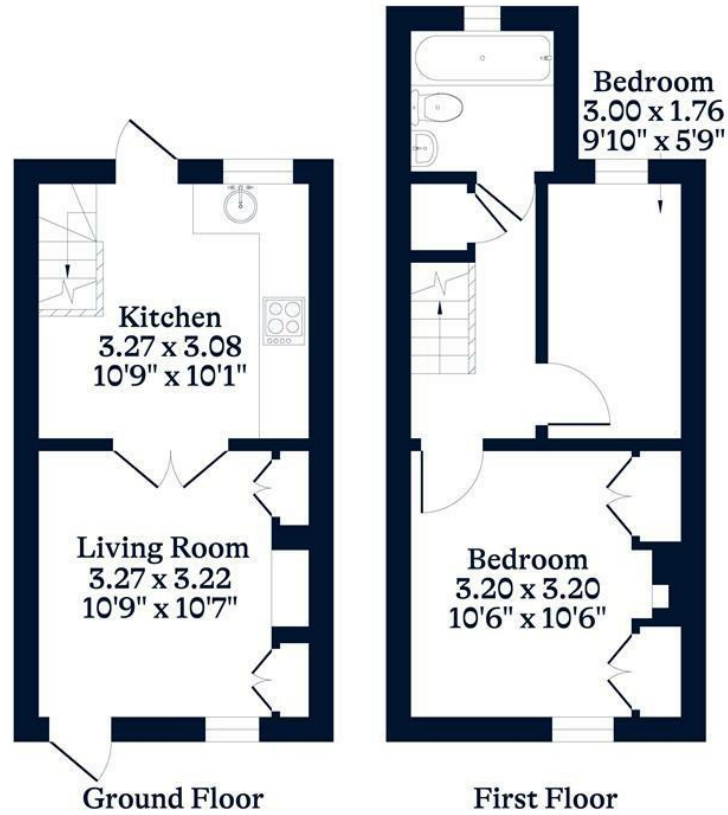




**APPROXIMATE FLOOR AREA**  
House - 45.39 sq m - 489 sq ft  
(Gross Internal Area)



**NOT TO SCALE**  
This plan is for illustration purposes only



This plan is for layout guidance only. Not drawn to scale unless stated. Windows and door openings are approximate. Whilst every care is taken in the preparation of this plan, please check all dimensions, shapes and compass bearings before making any decisions reliant upon them.

[OSBORNEHEATH.CO.UK](http://OSBORNEHEATH.CO.UK)