

🛏️ 2 🪑 2 🛁 1



Adelaide Square, *Windsor*

OSBORNE HEATH

An attractive period cottage in Windsor's golden triangle, close to the Long Walk, with two double bedrooms, spacious first floor bathroom and a pretty courtyard garden.

On the ground floor is a double reception room comprising of a sitting room with a bay window and study area with doors to outside, and a kitchen and dining room with doors out to the rear garden.

On the first floor there are two double bedrooms and a spacious bathroom.

Outside, there is a small front garden enclosed by a low level brick wall. The pretty rear courtyard garden enclosed by an old stock brick wall, raised flower beds and with a side gate.

Adelaide Square is a sought after location within Windsor's Golden Triangle, moments from the High Street and The Long Walk. Windsor has a wide range of shops and restaurants as well as the Castle, Great Park, Racecourse and Legoland. Nearby train stations include Windsor & Eton Central and Windsor & Eton Riverside where trains run to London Paddington (via Slough) and London Waterloo. Nearby schools include Eton, The Kings House, Oakfield, The Queen Anne, St Edwards, Trevelyan, Trinity St Stephen, Upton House, Windsor Boys and Windsor Girls. Windsor is also convenient for the M4, M25 and Heathrow Airport.

EPC rating F. Council Tax band F.

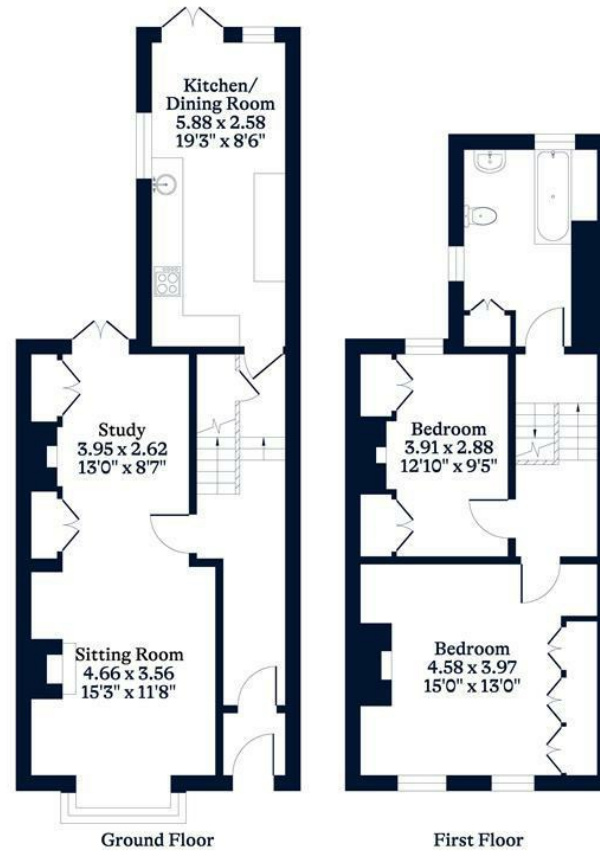




APPROXIMATE FLOOR AREA
House - 104.15 sq m - 1121 sq ft
(Gross Internal Area)



NOT TO SCALE
This plan is for illustration purposes only



This plan is for layout guidance only. Not drawn to scale unless stated. Windows and door openings are approximate. Whilst every care is taken in the preparation of this plan, please check all dimensions, shapes and compass bearings before making any decisions reliant upon them.

OSBORNEHEATH.CO.UK