

🛏️ 2 🪑 2 🛁 1



# Adelaide Square, *Windsor*

OSBORNE HEATH

# A stylish two bedroom Georgian house in Windsor's "Golden Triangle" sympathetically modernised throughout, yet retaining many period features.

On the ground floor there is an entrance hall with the original staircase, sitting room with fireplace, dining room and a kitchen with integrated appliances.

The first floor has a split-level landing, two bedrooms; both with a fireplace and built in wardrobes, and a stylish bathroom.

Outside, there is a west facing secluded garden that is mostly paved and enclosed by laurel hedging and an historic brick wall.

Adelaide Square is a sought after location within Windsor's Golden Triangle, moments from the High Street and The Long Walk. Windsor has a wide range of shops and restaurants as well as the Castle, Great Park, Racecourse and Legoland. Nearby train stations include Windsor & Eton Central and Windsor & Eton Riverside where trains run to London Paddington (via Slough) and London Waterloo. Nearby schools include Eton, The Kings House, Oakfield, The Queen Anne, St Edwards, Trevelyan, Trinity St Stephen, Upton House, Windsor Boys and Windsor Girls. Windsor is also convenient for the M4, M25 and Heathrow Airport.

EPC rating E. Council Tax band F.

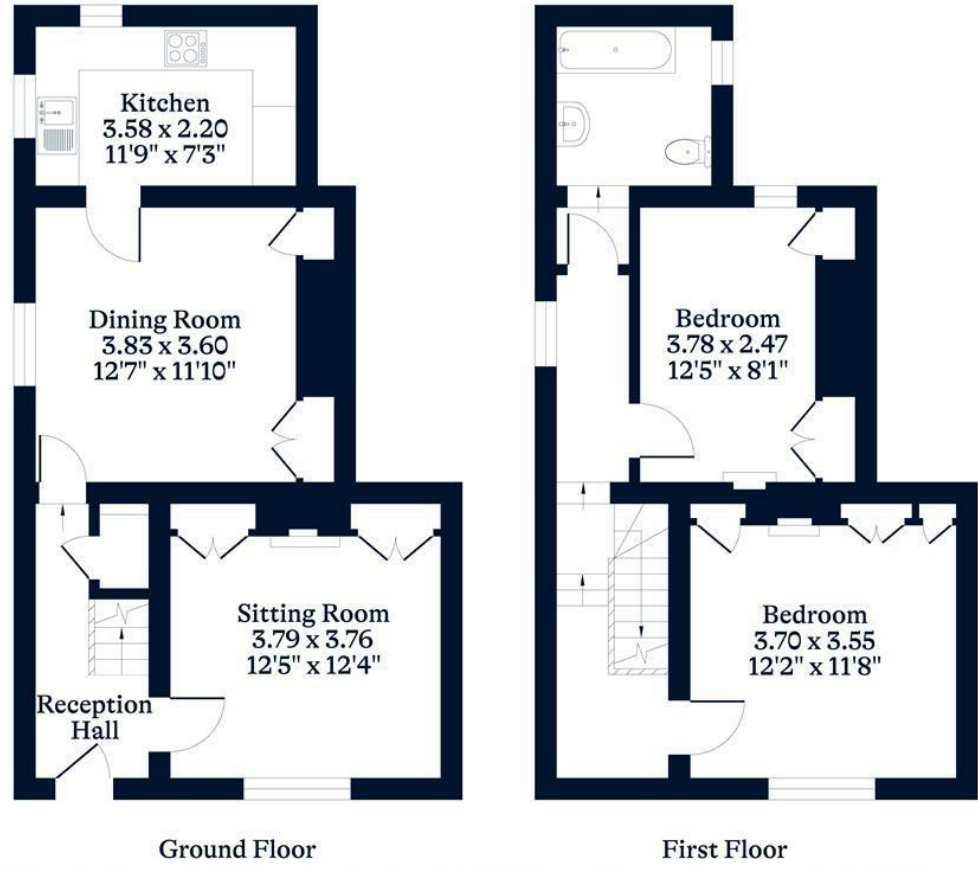




**APPROXIMATE FLOOR AREA**  
House - 89.00 sq m - 957 sq ft  
(Gross Internal Area)



**NOT TO SCALE**  
This plan is for illustration purposes only



This plan is for layout guidance only. Not drawn to scale unless stated. Windows and door openings are approximate. Whilst every care is taken in the preparation of this plan, please check all dimensions, shapes and compass bearings before making any decisions reliant upon them.

[OSBORNEHEATH.CO.UK](http://OSBORNEHEATH.CO.UK)