

5 2 3



# St. Leonards Road, *Windsor*

OSBORNE HEATH

# A substantial five bedroom period house in Windsor town centre, with character features, a west facing garden and off road parking for two cars with EV charging points.

On the ground floor there is a living room, separate dining room, kitchen with dining space plus bi-folding doors out to the garden, and a downstairs WC.

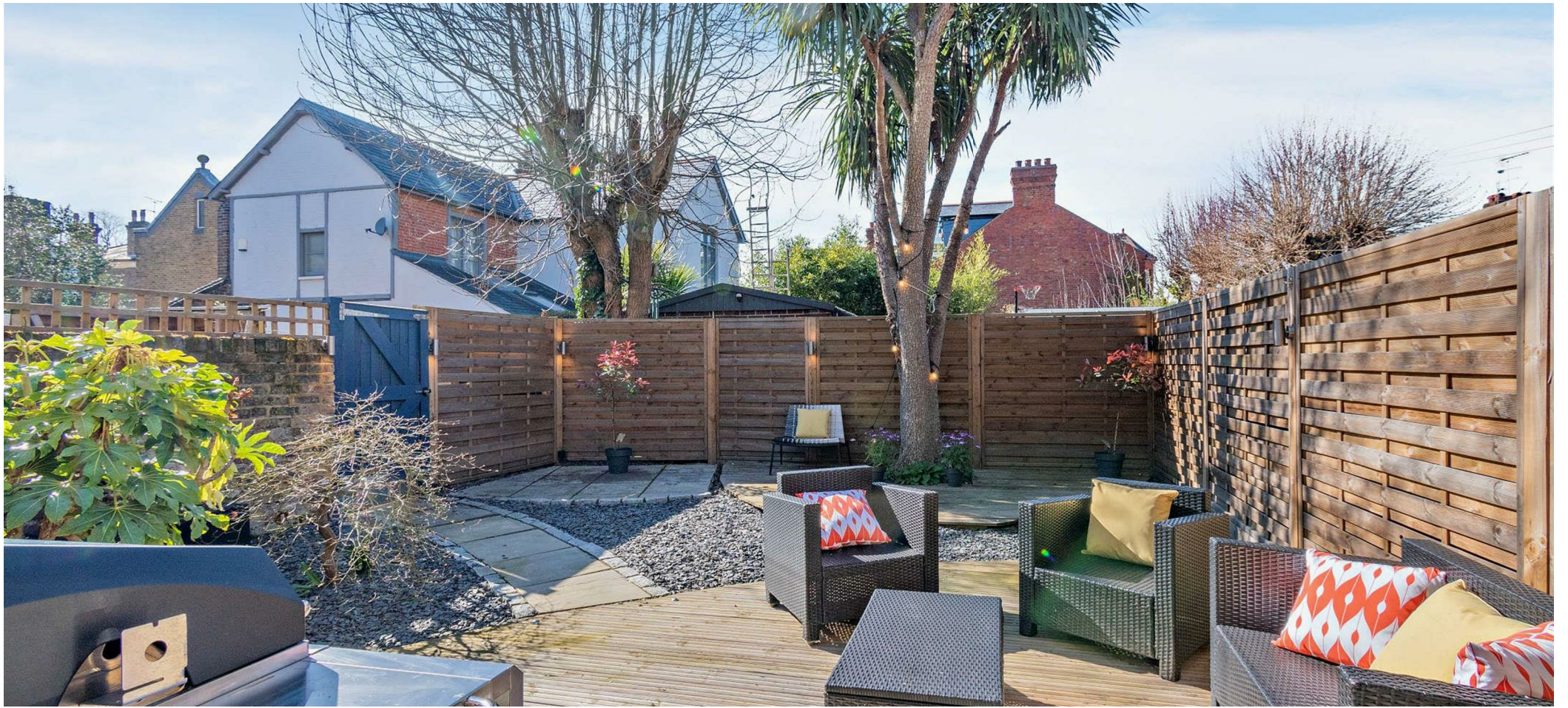
On the first floor there are four bedrooms (three doubles and a single), an en suite shower room and a family bathroom. The second floor has the principal bedroom with air conditioning, Juliet balcony, eaves storage, and a contemporary shower room.

The front garden has a low brick wall with railings and a decorative tiled path to the front door. The landscaped rear garden is west facing and has areas of decking and paving, and there is also an area of artificial grass to the side of the property. There is a side gate that allows access to parking for two cars with EV charging points.

St Leonards Road is situated in Windsor town centre. Windsor has a wide range of shops and restaurants as well as the Castle, Great Park, Theatre, Racecourse and Legoland. Nearby train stations include Windsor & Eton Central and Windsor & Eton Riverside where trains run to London Paddington (via Slough) and London Waterloo. Nearby schools include Upton House, Oakfield, The Queen Anne, St Edwards, Trevelyan, Trinity St Stephen, Windsor Boys and Windsor Girls. Windsor is also convenient for the M4, M25 and Heathrow Airport.

EPC rating E. Council Tax band G.

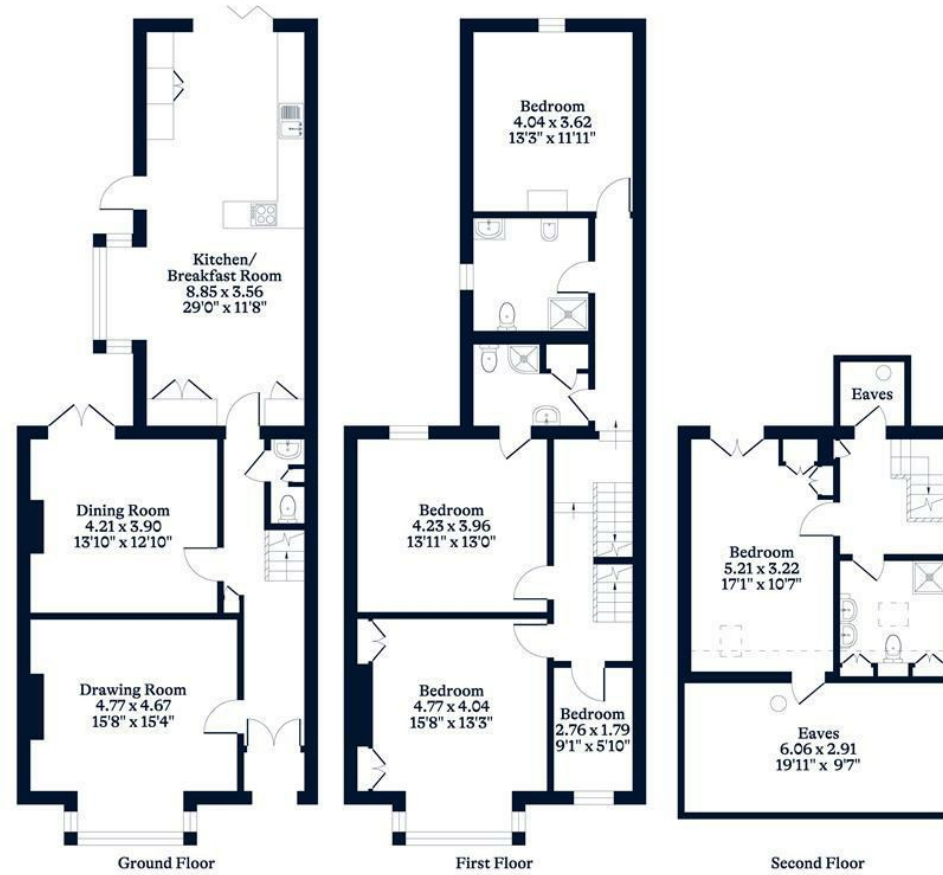




**APPROXIMATE FLOOR AREA**  
House - 195 sq m - 2100 sq ft  
(Gross Internal Area)



**NOT TO SCALE**  
This plan is for illustration purposes only



This plan is for layout guidance only. Not drawn to scale unless stated. Windows and door openings are approximate. Whilst every care is taken in the preparation of this plan, please check all dimensions, shapes and compass bearings before making any decisions reliant upon them.

[OSBORNEHEATH.CO.UK](http://OSBORNEHEATH.CO.UK)