

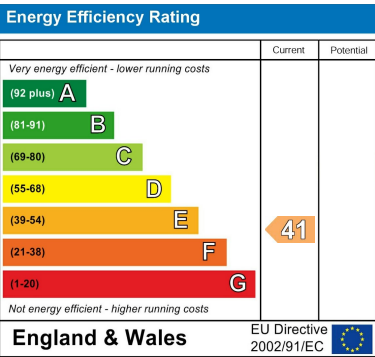
Directions

Viewings

Viewings by arrangement only. Call 01993 684572 to make an appointment.

EPC Rating

E



Brookside Cottage Ewen, Cirencester, GL7 6BU

£3,500 Per Month

- Short let
- Spacious family home
- Large garden
- Village location
- Fully-furnished
- Wood burning stove



# Brookside Cottage , Cirencester GL7 6BU

Ewen is a small, picturesque village in the Cotswolds, Gloucestershire, just a couple of miles south-west of Cirencester. Surrounded by beautiful countryside and near the source of the River Thames, it offers a peaceful rural lifestyle within the Cotswold Area of Outstanding Natural Beauty. The village is known for its traditional stone cottages, tranquil setting, and historic Wild Duck Inn, a 16th-century pub at its heart.

There’s plenty to enjoy nearby, including scenic walking and cycling routes, the Cotswold Water Park for outdoor activities, and Cirencester’s shops, cafés, and cultural attractions. The area is ideal for those who enjoy country living with easy access to amenities.

Ewen is well-placed for families, with Kemble Primary School less than a mile away and Cirencester Deer Park School nearby for secondary education. Several excellent independent schools, such as Rendcomb College and Westonbirt School, are also within easy reach.

Transport links are strong for such a rural spot. Kemble railway station, just over a mile away, offers direct trains to London Paddington in around 75 minutes, while the nearby A417/A419 connects to the M4 and M5. Cirencester is only a short drive for shopping, dining, and services.

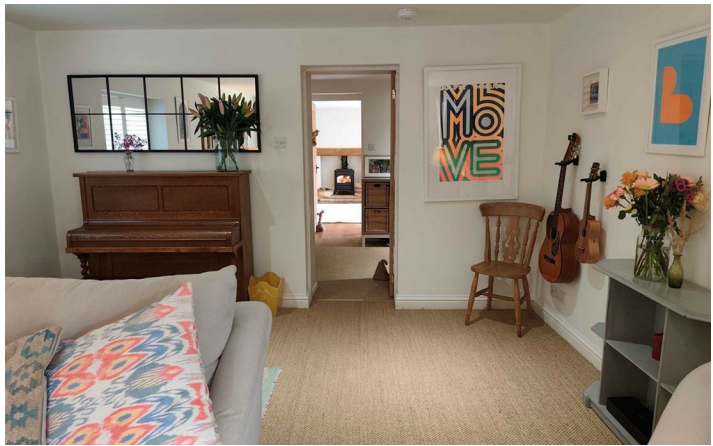
 3

 3

 3

 E

Council Tax Band:



Tucked away in the charming village of Ewen, Brookside Cottage is a beautifully presented family home that perfectly combines classic Cotswold character with modern comfort. Upon entering, you’re greeted by a spacious hallway featuring a built-in bench, ideal for shedding muddy boots after country walks. Opposite, a well-equipped utility room and convenient downstairs WC make this space both practical and welcoming.

The hallway leads through to the inviting living room, complete with a cosy wood-burning stove and French doors that open onto the garden, creating a seamless flow between indoor and outdoor living. Opposite the living room, the snug/playroom offers a versatile space for children to play or for hosting guests, with its own set of doors to the garden as well as a wood burning stove. The heart of the home is the light and airy kitchen, where exposed Cotswold stone walls and wooden beams add warmth and charm. An AGA takes pride of place, and a dining table for six makes this the perfect spot for family meals or relaxed entertaining.

Upstairs, the master bedroom offers a calm and contemporary retreat, featuring a modern en-suite shower room. A delightful children’s bedroom with twin beds and a stylish family bathroom with a bath complete the first floor. The second floor reveals a charming loft room with two single beds, slanted ceilings, and storage space.

Outside, the large garden provides ample space for play and relaxation, with the added luxury of a hot tub. A shared gated driveway at the front offers convenient access and parking.