

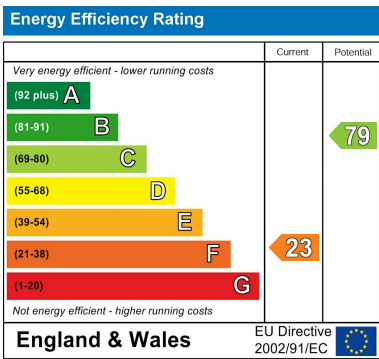
Directions

Viewings

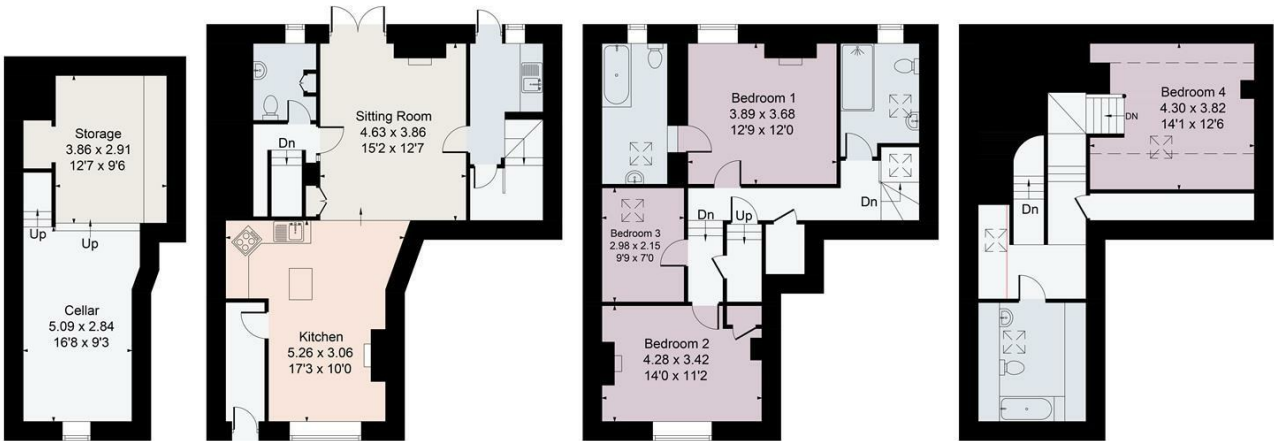
Viewings by arrangement only. Call 01993 684572 to make an appointment.

EPC Rating

F



Windowbox, 27 Lower High Street, Burford OX18 4RN
Main House Approx. Gross Internal Area:- 160.57 sq.m. 1728 sq.ft.
Cellar Approx. Gross Area:- 29.53 sq.m. 318sq.ft.
Total Approx. Gross Area:- 190.1 sq.m. 2046 sq.ft.



Cellar Floor Ground Floor First Floor Second Floor

FOR ILLUSTRATIVE PURPOSES ONLY-NOT TO SCALE
The position & size of doors, windows, appliances and other features are approximate only.
Denotes restricted head height
www.dmlphotography.co.uk



THE COTSWOLD LETTING AGENCY
BETTER BY FAR



Window Box Cottage 27 Lower High Street, Burford, OX18 4RN
£3,250 Per Month

- Prime Burford location
- Beautifully designed
- Private courtyard
- Cosy fireplace

Window Box Cottage 27 Lower High Street, Burford

OV10 ADN1

Nestled in the heart of the Cotswolds, Burford stands as a quintessential English market town. Its strategic location in the Windrush Valley places it within easy reach of larger towns like Oxford, a mere 20 miles away, and the vibrant city of Cheltenham. The surrounding area boasts a tapestry of charming villages, each with its own distinct character, making Burford an ideal base for exploring the region. The town itself is a living testament to history, with its architecture a captivating blend of honey-coloured stone and timber-framed buildings. Meandering along the High Street, visitors are transported back in time, discovering quaint shops, traditional pubs, and elegant boutiques. Burford's architectural heritage, coupled with its idyllic setting, offers an escape from the modern world, inviting visitors to slow down and immerse themselves in the timeless beauty of the Cotswolds.

 3

 4

 2

 F

Council Tax Band: E



Available now, 27 Lower High Street is a quintessential Burford property steeped in history. This Grade II listed gem boasts a prime location in the heart of the market town, combining characterful charm with contemporary comforts.

Beautifully renovated, the cottage is a stylish yet cosy home with high ceilings and open-plan living creating a light and airy atmosphere. The entrance hall leads straight to the heart of the home: a spacious kitchen/dining area with custom-built cabinetry, a central island, and integrated appliances. A delightful fireplace adds warmth and character, making it the perfect space for entertaining guests.

The kitchen seamlessly flows into a comfortable sitting room, complete with a wood-burning stove and French doors opening onto the private courtyard garden. A practical utility room and a downstairs cloakroom complete the ground floor.

The lower level offers a versatile cellar, a great space for an additional media room, providing additional living space.

Upstairs, the property continues to impress with period fireplaces, three generous bedrooms, a separate dressing room and stylish bathrooms. The principal bedroom is a luxurious retreat with an en-suite bathroom and ample wardrobe space.

The private courtyard garden is an oasis of tranquillity. Perfect for al fresco dining or simply relaxing, this outdoor space is accessed via French doors from the sitting room.