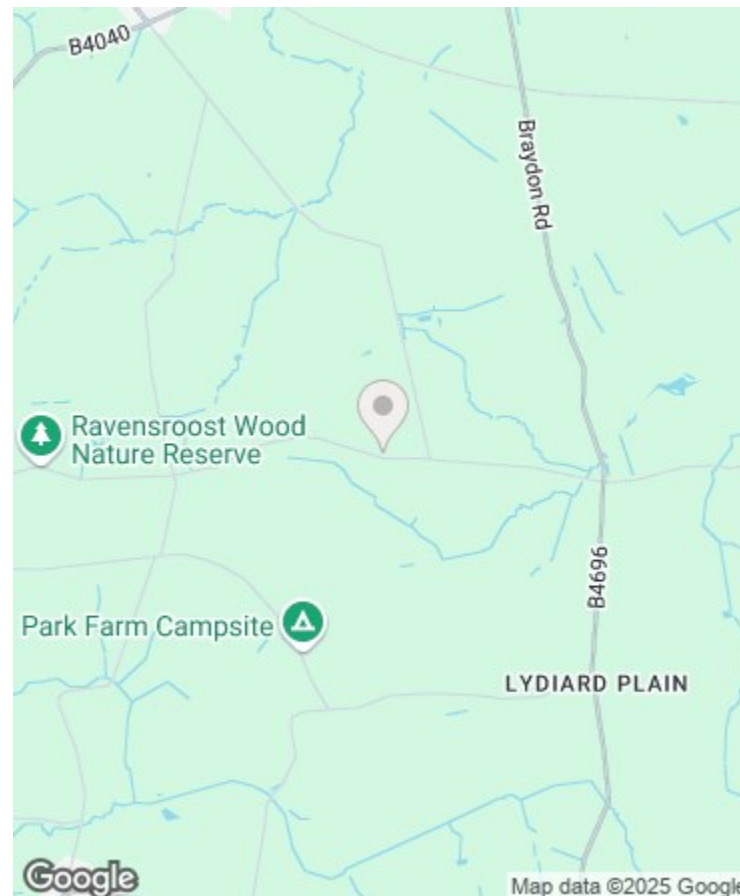




THE COTSWOLD LETTING AGENCY

BETTER BY FAR



Directions

Viewings

Viewings by arrangement only. Call 01993 684572 to make an appointment.

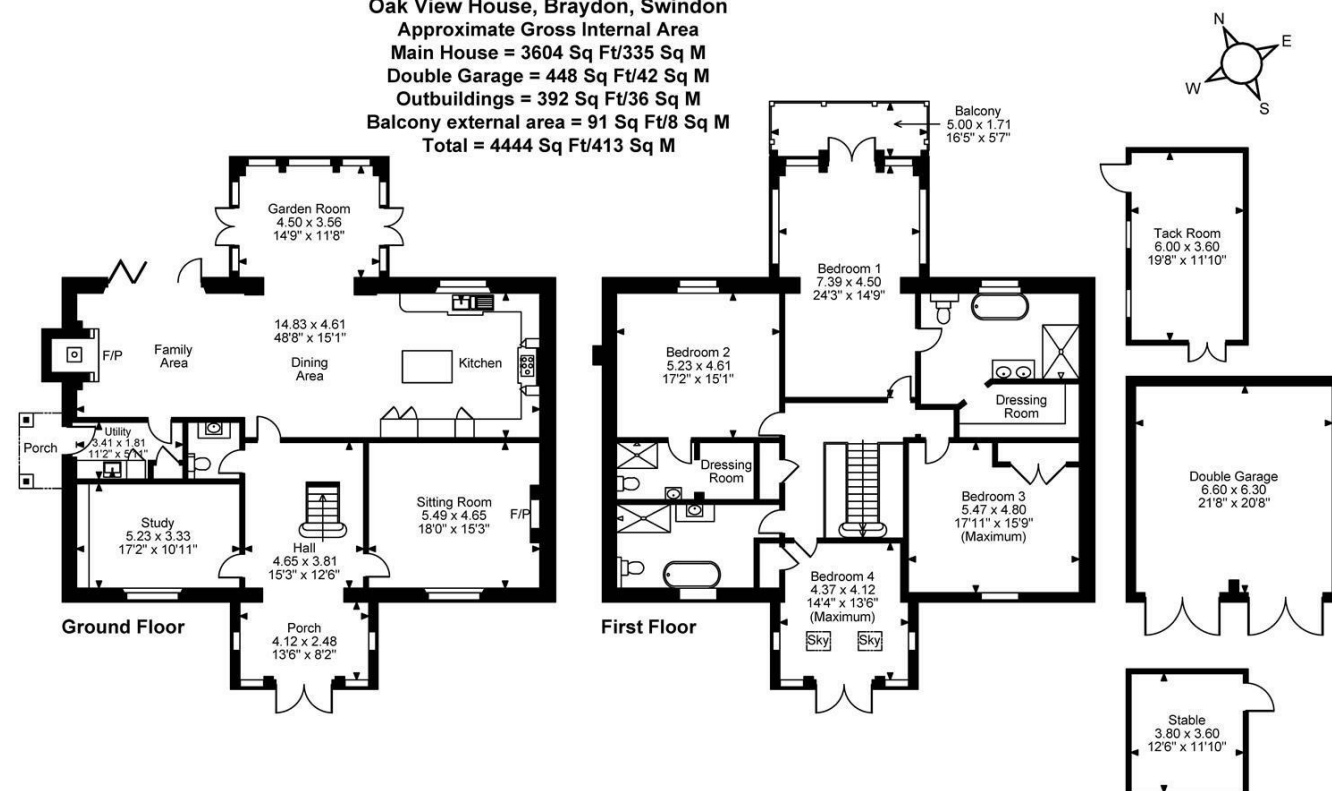
EPC Rating

B

Energy Efficiency Rating		
	Current	Potential
Very energy efficient - lower running costs		
(92 plus) A		
(81-91) B	84	87
(69-80) C		
(55-68) D		
(39-54) E		
(21-38) F		
(1-20) G		
Not energy efficient - higher running costs		
England & Wales	EU Directive 2002/91/EC	



Oak View House, Braydon, Swindon
Approximate Gross Internal Area
Main House = 3604 Sq Ft/335 Sq M
Double Garage = 448 Sq Ft/42 Sq M
Outbuildings = 392 Sq Ft/36 Sq M
Balcony external area = 91 Sq Ft/8 Sq M
Total = 4444 Sq Ft/413 Sq M



FOR ILLUSTRATIVE PURPOSES ONLY - NOT TO SCALE
The position & size of doors, windows, appliances and other features are approximate only.
© ehouse. Unauthorised reproduction prohibited. Drawing ref. dig/8642980/CJN



Oak View House Braydon, SN5 0AG

£4,750 Per Month

- Stunning views
- Garage
- Unfurnished
- 4 bedrooms
- Long term Let

Oak View House , Braydon SN5 0AG

Braydon is a peaceful hamlet nestled in the Wiltshire countryside, offering a quiet escape surrounded by open fields, ancient woodland, and rolling hills. Once part of the vast royal Braydon Forest, the area still holds a sense of natural beauty and historic charm, making it ideal for walkers, wildlife enthusiasts, and anyone looking to unwind in a scenic setting.

Outdoor activities abound, from woodland walks and birdwatching to nearby horse riding and cycling routes. Just a short drive away, the Cotswold Water Park offers lakes for swimming, paddle boarding, and nature trails, while Ringsbury Camp near Purton provides a glimpse into the area's Iron Age past. Local pubs in nearby villages offer cosy spots to relax with traditional fare and local ales.

Braydon also boasts excellent connectivity to nearby towns and transport links. Both Swindon and Kemble stations are located within just 10 miles of Oak View House, offering direct routes to London Paddington—reaching the capital in as little as 50 minutes from Swindon and 69 minutes from Kemble. The area also benefits from convenient access to the M4 and M5, making travel to Bristol, Bath, and Oxford quick and straightforward. Cirencester is just 25 minutes away for shopping and attractions, while historic towns like Malmesbury and Cricklade offer charming streets, heritage sites, and local markets. With its peaceful atmosphere and access to nature and culture, Braydon is a hidden gem in the heart of Wiltshire.

 4

 3

 3

 B

Council Tax Band: D



UNEXPECTEDLY RE-AVAILABLE! Oak View House is an exceptional four-bedroom family home available for long term let, thoughtfully designed to offer both generous living space and a seamless connection to the outdoors. Nestled in a peaceful setting, this property boasts an elegant yet welcoming atmosphere, making it ideal for family life, entertaining, or simply enjoying the comforts of home.

At the heart of the home is a stunning open-plan kitchen and dining area, thoughtfully designed for everyday living and entertaining. The kitchen seamlessly flows into a welcoming family area, creating a warm, sociable hub where everyone can gather. A separate living room offers a peaceful retreat, perfect for relaxing evenings. For those who work from home, there's a dedicated study, while a bright and airy garden room provides an ideal space to enjoy the outdoors all year round.

Upstairs, the sense of space continues. Four well-proportioned bedrooms provide comfort for the whole family. The master bedroom is a true sanctuary, complete with its own modern en-suite bathroom, balcony and dressing room. The remaining bedrooms are served by a contemporary family bathroom, fitted with stylish fixtures and a full-size bathtub.

Outside, Oak View House enjoys a large, private garden—ideal for children to play or for summer entertaining. The property also benefits from a double garage, providing ample storage and secure parking.

With its spacious layout, modern features, and beautifully maintained surroundings, Oak View House offers an exceptional opportunity for those seeking a high-quality home. Ideal for families or professionals in search of comfort, flexibility, and a peaceful setting, this property is ready to enjoy from day one.