



THE COTSWOLD LETTING AGENCY

BETTER BY FAR



### Directions

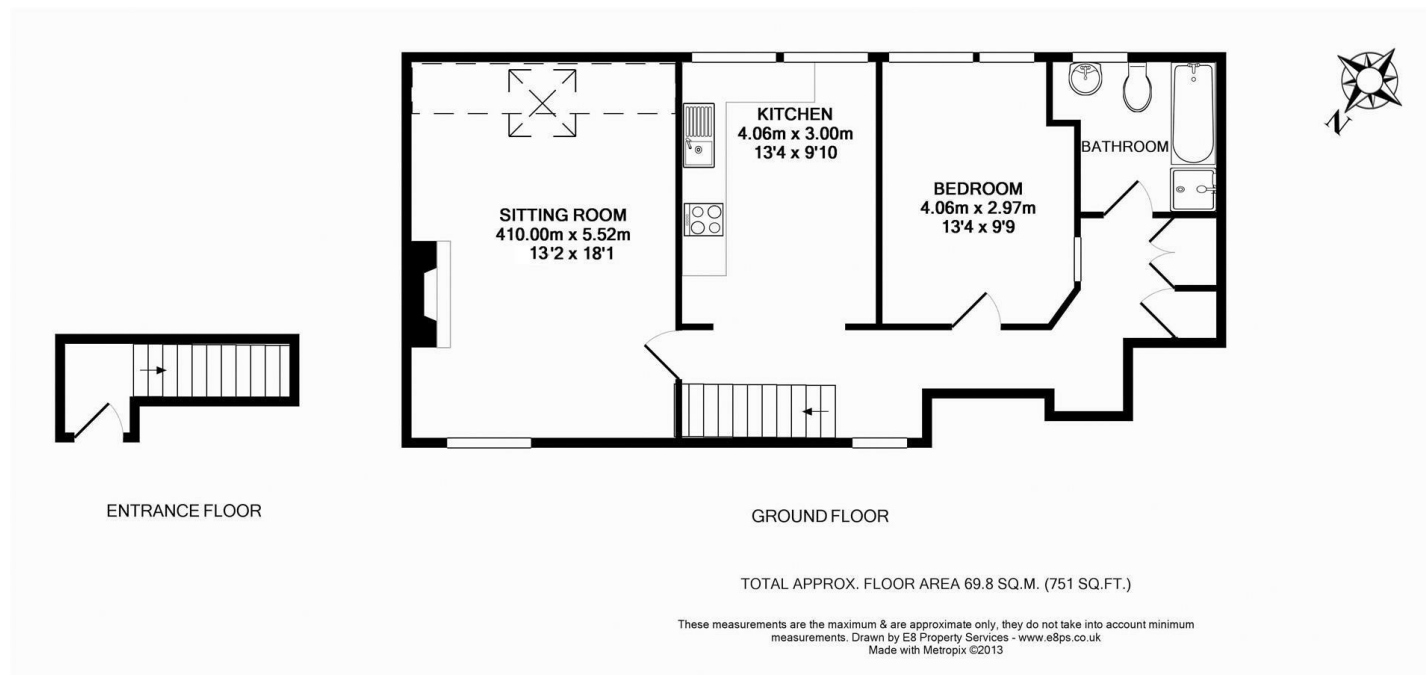
### Viewings

Viewings by arrangement only. Call 01993 684572 to make an appointment.

### EPC Rating

C

Energy Efficiency Rating		Current	Potential
Very energy efficient - lower running costs			
(92 plus) A			
(81-91) B			
(69-80) C		72	
(55-68) D			
(39-54) E			
(21-38) F			
(1-20) G			
Not energy efficient - higher running costs			
England & Wales		EU Directive 2002/91/EC	



The Duke, 20A Oxford Street, Woodstock, OX20 1TS

£1,995

- One-bedroom apartment
- Gated, secure allocated parking
- Beautifully maintained shared courtyard
- Picturesque streets and stunning Cotswold architecture
- Idyllic settling for a balanced lifestyle

# The Duke, 20A Oxford Street, Woodstock OX20 1TS

Woodstock is a charming market town steeped in history and surrounded by the natural beauty of the Oxfordshire countryside. Known for its picturesque streets and stunning Cotswold architecture, Woodstock offers a tranquil yet vibrant community atmosphere. The town is home to an array of independent shops, cosy cafes, and traditional pubs, providing residents with a delightful selection of local amenities. Woodstock is also renowned for its cultural attractions, including the world-famous Blenheim Palace, a UNESCO world Heritage Site, which offers beautiful gardens, historical exhibitions, and seasonal events. Additionally, the town boasts excellent transport links, making it easy to commute to nearby Oxford and beyond. Whether you are looking for a leisurely countryside walks or taste of local culture, Woodstock provides idyllic settling for a balanced lifestyle.



Council Tax Band: B

## Property Information

Introducing The Duke a beautifully appointed one-bedroom apartment available immediately on a short-term basis, perfect for a couple or single occupant looking to explore the Cotswolds. Situated in a prime location within Woodstock, this property offers a harmonious blend of modern convenience and historical charm.

You enter the property from a beautifully maintained shared courtyard. On entering the property, you are greeted by a fully equipped kitchen designed with both functionality and style in mind. The stylish living room is accentuated by an electric fireplace that create a cosy atmosphere. The room is further enhanced by unique and sophisticated lighting fixtures, adding a touch of modern elegance to the space. A generously sized double bedroom provides a comfortable and restful retreat. Adjacent to the bedroom is a good-sized family bathroom.

Additionally, The Duke offers gated, secure allocated parking, providing peace of mind for residents. The shared courtyard features a lovely seating area, perfect for enjoying the warmer summer months.

The Duke presents a perfect living space for those seeking a combination of contemporary amenities and historical charm, making it an ideal home for individuals or couples in search of comfort and convenience in a picturesque setting.

