



46 John Ruskin Road, Tadpole Garden Village

Swindon

£390,000

mcfarlane
property.com



46 John Ruskin Road

Tadpole Garden Village, Swindon

Introducing this well presented 3 Bedroom Semi-Detached House located in the ever popular TADPOLE GARDEN VILLAGE. This property boasts an EXTENSION, creating a spacious and light-filled interior that is sure to IMPRESS. The SOUTH FACING REAR GARDEN ensures plenty of sunlight throughout the day for your enjoyment.

Step inside to discover the OPEN PLAN LIVING space, perfect for both relaxation and entertaining guests. The modern kitchen seamlessly flows into the dining area and lounge, making it an ideal setting for gatherings and family time.

Upstairs, you will find 3 BEDROOMS, including an ENSUITE to the MASTER bedroom, providing a touch of luxury and convenience. The additional bedrooms are versatile and can be adapted to fit your needs, whether it's a home office, guest room, or nursery.

This property also features a GARAGE and DRIVEWAY for 2 CARS, ensuring ample parking space for you and your guests. Located close to TADPOLE PLAY PARK and other amenities, you'll have everything you need right at your doorstep.

Don't miss the chance to make this property your own. INTERNAL VIEWING is highly recommended to fully appreciate all that this home has to offer. Get in touch today to schedule a viewing and take the first step towards making this property YOURS.

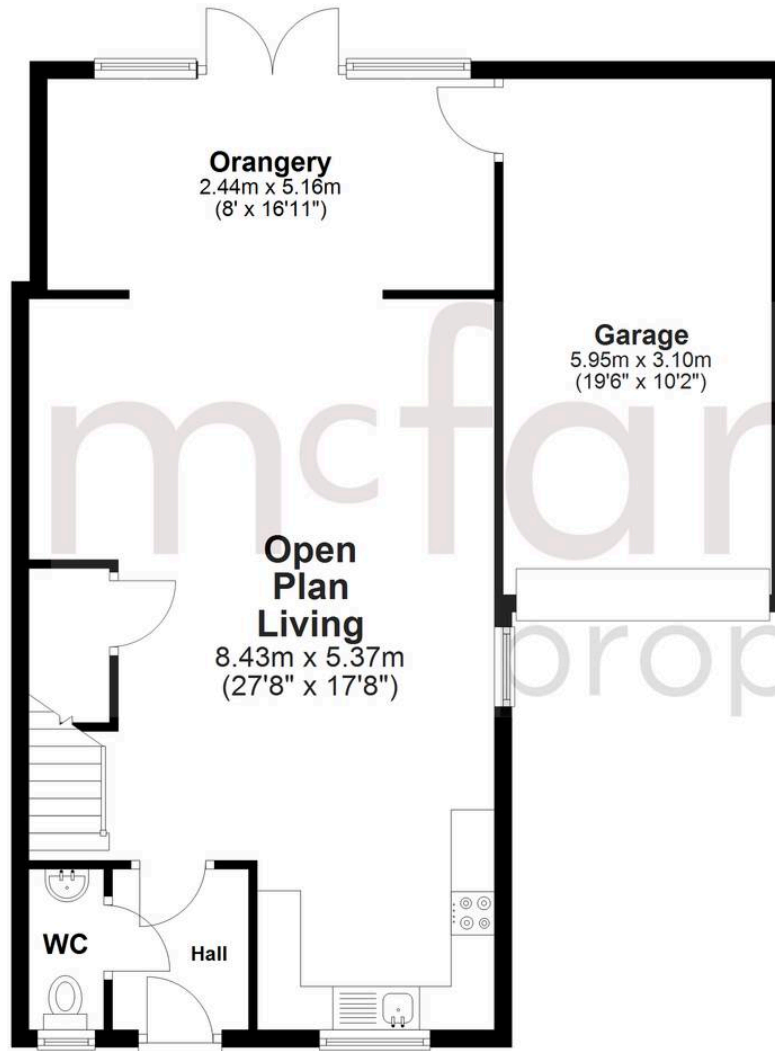
- EXTENDED
- 3 BEDROOM SEMI DETACHED
- SOUTH FACING REAR GARDEN





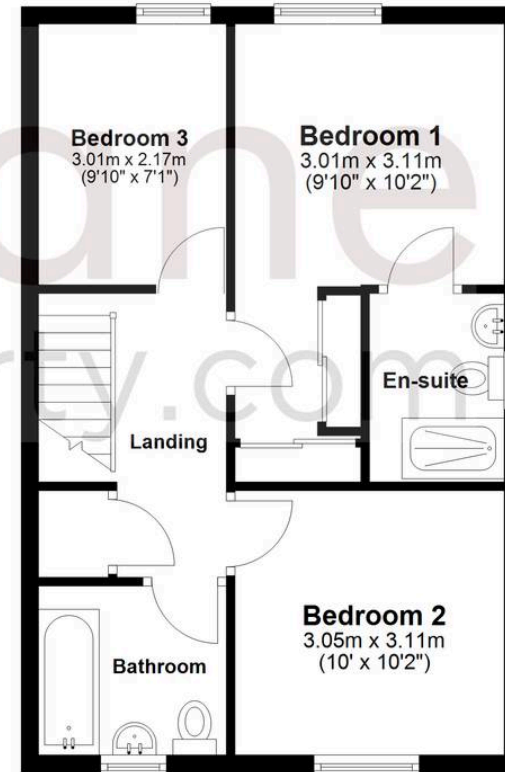
Ground Floor

Approx. 77.5 sq. metres (833.7 sq. feet)



First Floor

Approx. 45.2 sq. metres (486.3 sq. feet)



Total area: approx. 122.6 sq. metres (1320.0 sq. feet)

McFarlane Sales & Lettings

North Swindon, Redhouse Village Centre, Swindon – SN25 2FW

01793 296600 • swindon@mcfarlaneproperty.com • www.mcfarlaneproperty.com/