



80 Winton Road
Swindon

£140,000
mcfarlane
property.com



80 Winton Road

Nestled within a sought-after location, we proudly present this 2 bedroom ground floor flat. This **GROUND FLOOR APARTMENT**, offered with the added convenience of **NO ONWARD CHAIN**, making it the perfect choice for **FIRST TIME BUYERS** and those looking to **DOWNSIZE**.

Upon arrival, you will be greeted by the convenience of **ALLOCATED PARKING**, ensuring stress-free living. The property boasts an en-suite bathroom in addition to a well-appointed family bathroom. The bedrooms are complemented by **FITTED WARDROBES** providing ample storage space, further enhancing the practicality of this home.

The heart of the flat is the **OPEN PLAN KITCHEN** and living accommodation, ideal for entertaining guests or relaxing in comfort. The modern kitchen seamlessly integrates with the living area, creating a space that is both functional and stylish. The property is also equipped with a **SECURE ENTRY SYSTEM**, ensuring utmost peace of mind for residents.

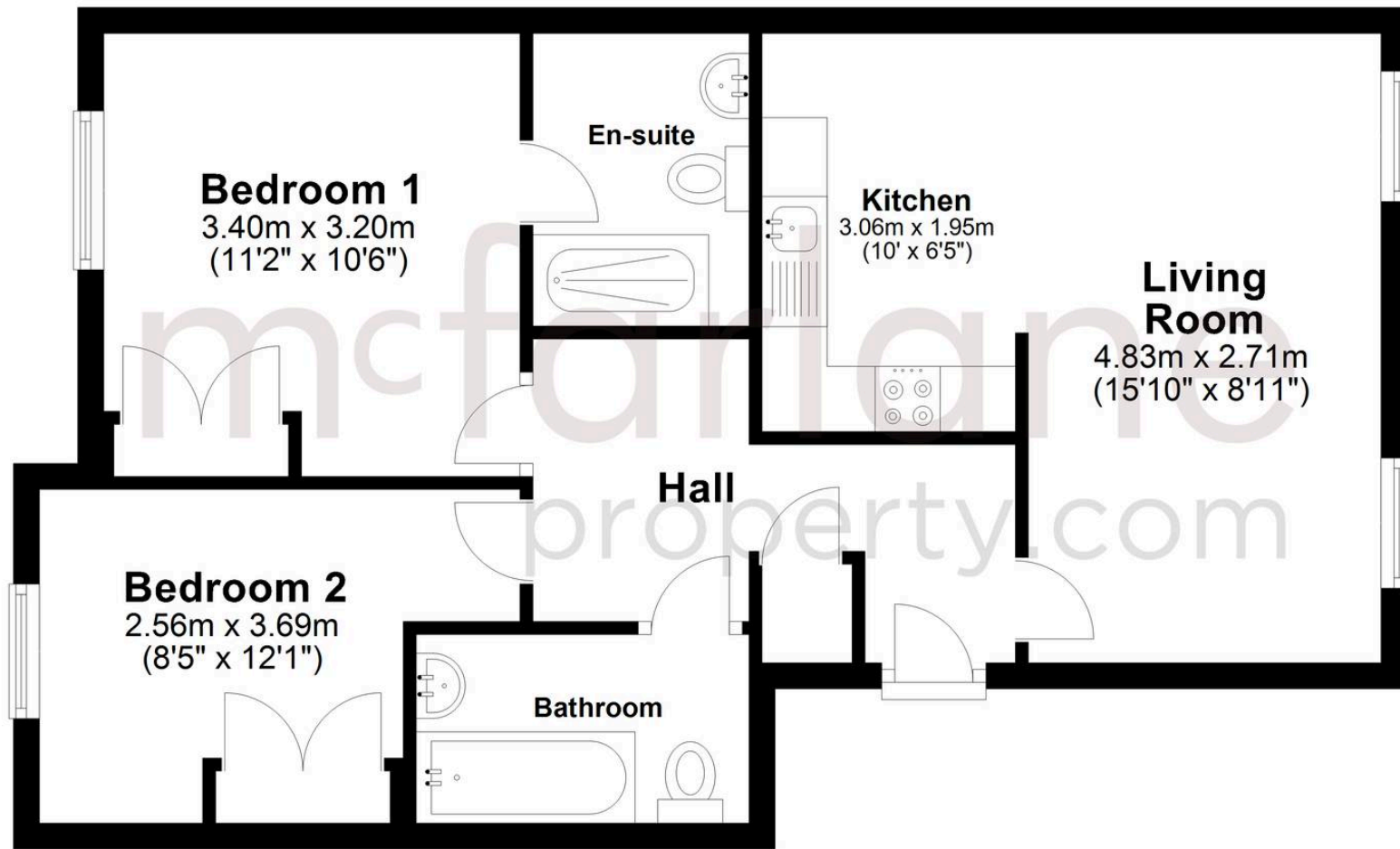


- **GROUND FLOOR APARTMENT**
- **NO ONWARD CHAIN**
- **IDEAL FOR FIRST TIME BUYERS AND DOWNSIZING**
- **ALLOCATED PARKING**
- **EN-SUITE AND FAMILY BATHROOM**
- **FITTED WARDROBES TO BEDROOM 1**
- **OPEN PLAN KITCHEN / LIVING ACCOMODATION**
- **SECURE ENTRY SYSTEM**
- **126 YEARS REMAINING ON LEASE**



Ground Floor

Approx. 54.8 sq. metres (589.6 sq. feet)



Total area: approx. 54.8 sq. metres (589.6 sq. feet)

McFarlane Sales & Lettings

North Swindon, Redhouse Village Centre, Swindon - SN25 2FW

01793 296600 • swindon@mcfarlaneproperty.com • www.mcfarlaneproperty.com/