



115 Greene Street, Tadpole Garden Village

Swindon

£415,000

mcfarlane
property.com



115 Greene Street

Tadpole Garden Village, Swindon

In the sought-after Tadpole Garden Village area, this stunning EXTENDED FAMILY HOME offers a remarkable living experience. With 3 bedrooms, this SEMI DETACHED abode is the epitome of comfortable and stylish living.

Upon entering the property, you are greeted by a MODERN FITTED KITCHEN that seamlessly flows into the family room, providing the ideal space for entertaining guests or simply relaxing with loved ones. The addition of a separate SITTING ROOM offers a cosy retreat for quiet evenings or intimate gatherings.

The EN-SUITE in BEDROOM ONE adds a touch of luxury and convenience, while the FAMILY BATHROOM and additional WC cater to the needs of a growing household. The property also benefits from a GARAGE and TANDEM PARKING, ensuring ample space for vehicles and storage. The low maintenance PRIVATE REAR GARDEN offers a tranquil sanctuary for outdoor leisure, perfect for enjoying a cup of coffee in the morning sun or unwinding after a long day.

Situated in the popular Tadpole Garden Village locale, residents benefit from proximity to local conveniences and seamless access to main road links for effortless commuting.

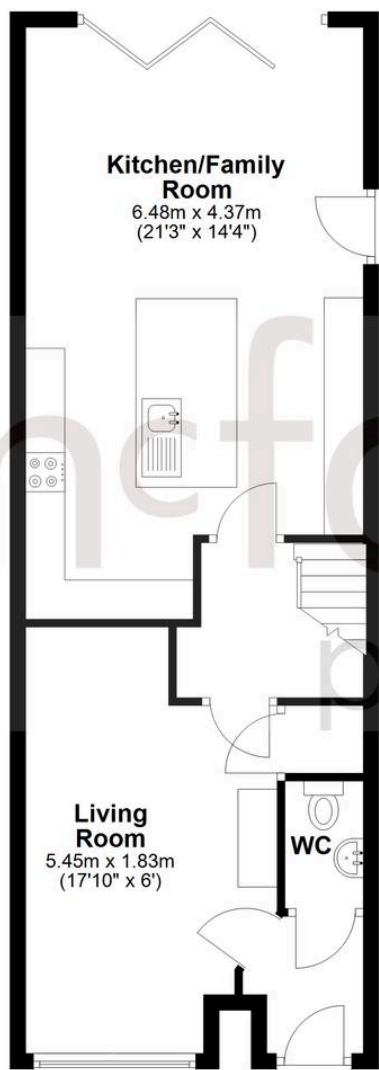
Don't miss this opportunity to make this EXECUTIVE HOME your own and experience the true essence of comfortable and convenient living. Contact us now to arrange a viewing and take the first step towards owning this exceptional property.





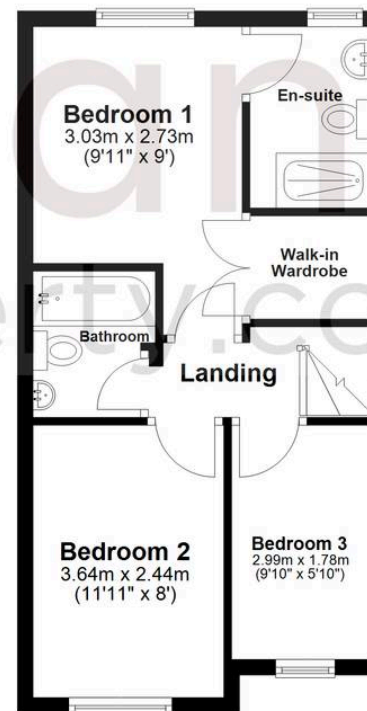
Ground Floor

Approx. 56.3 sq. metres (605.9 sq. feet)



First Floor

Approx. 36.5 sq. metres (393.4 sq. feet)



Total area: approx. 92.8 sq. metres (999.3 sq. feet)

McFarlane Sales & Lettings

North Swindon, Redhouse Village Centre, Swindon – SN25 2FW

01793 296600 • swindon@mcfarlaneproperty.com • www.mcfarlaneproperty.com/