



115 Greene Street, Tadpole Garden Village

Swindon

£425,000





## 115 Greene Street

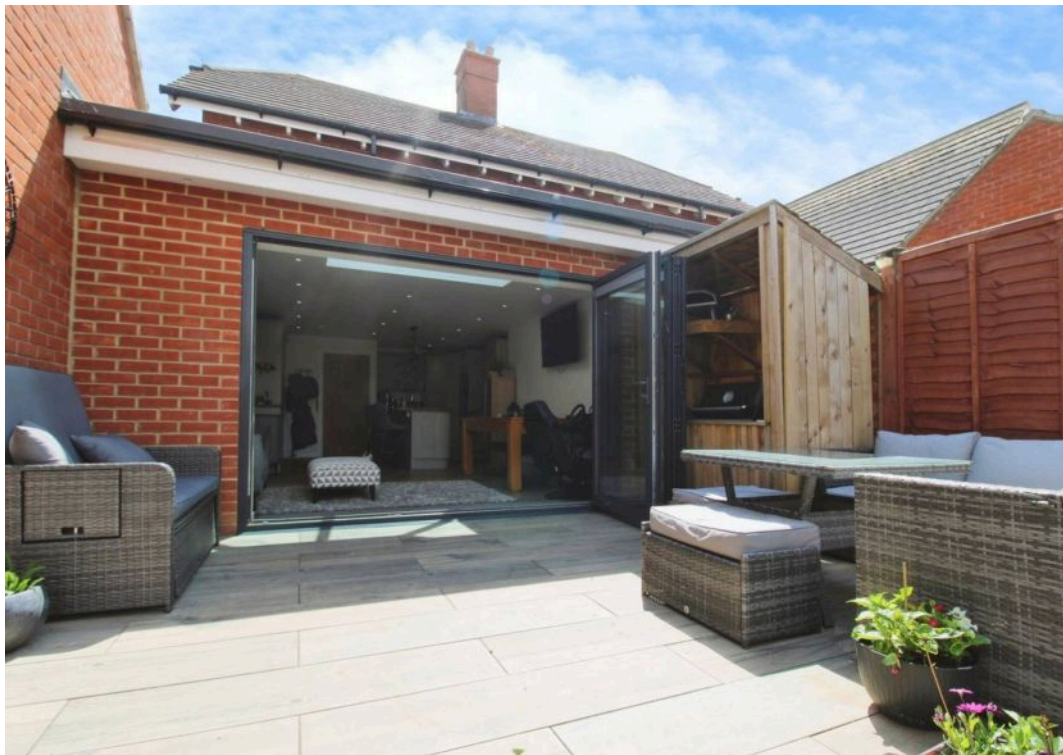
### Tadpole Garden Village, Swindon

In the sought-after Tadpole Garden Village area, this stunning EXTENDED FAMILY HOME offers a remarkable living experience. With 3 bedrooms, this SEMI DETACHED abode is the epitome of comfortable and stylish living. Upon entering the property, you are greeted by a MODERN FITTED KITCHEN that seamlessly flows into the family room, providing the ideal space for entertaining guests or simply relaxing with loved ones. The addition of a separate SITTING ROOM offers a cosy retreat for quiet evenings or intimate gatherings. The EN-SUITE in BEDROOM ONE adds a touch of luxury and convenience, while the FAMILY BATHROOM and additional WC cater to the needs of a growing household. The property also benefits from a GARAGE and TANDEM PARKING, ensuring ample space for vehicles and storage. The low maintenance PRIVATE REAR GARDEN offers a tranquil sanctuary for outdoor leisure, perfect for enjoying a cup of coffee in the morning sun or unwinding after a long day. Don't miss this opportunity to make this EXECUTIVE HOME your own and experience the true essence of comfortable and convenient living. Contact us now to arrange a viewing and take the first step towards owning this exceptional property.



- EXTENDED FAMILY HOME
- MODERN FITTED KITCHEN OPEN PLAN TO FAMILY ROOM
- SEPARATE SITTING ROOM
- THREE BEDROOM SEMI DETACHED HOUSE
- EN-SUITE TO BEDROOM ONE
- FAMILY BATHROOM AND WC
- GARAGE AND TANDEM PARKING
- LOW MAINTENANCE PRIVATE REAR GARDEN
- POPULAR TADPOLE GARDEN VILLAGE LOCATION
- CLOSE TO LOCAL FACILITIES AND EASY ACCESS TO MAIN ROAD LINKS







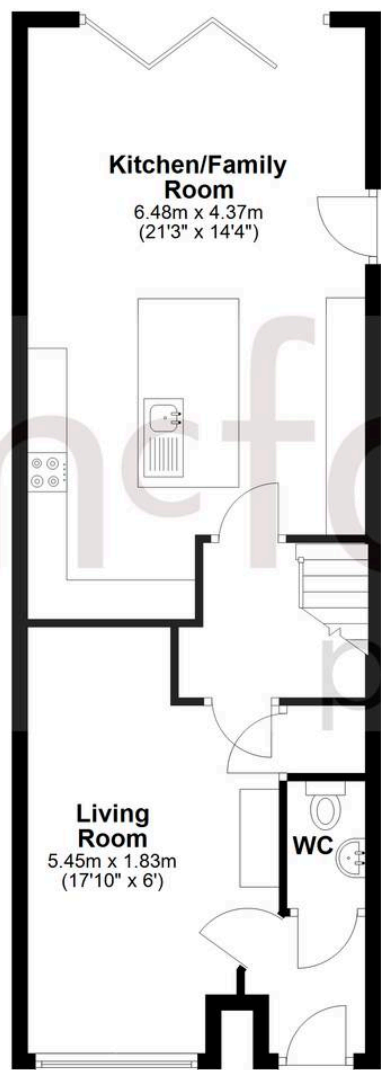






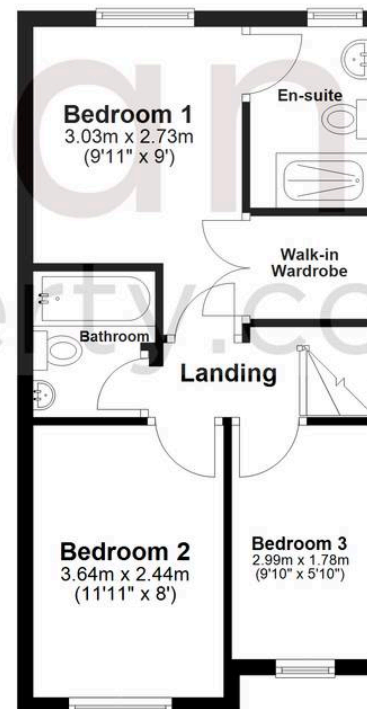
### Ground Floor

Approx. 56.3 sq. metres (605.9 sq. feet)



### First Floor

Approx. 36.5 sq. metres (393.4 sq. feet)



Total area: approx. 92.8 sq. metres (999.3 sq. feet)

## McFarlane Sales & Lettings

North Swindon, Redhouse Village Centre, Swindon – SN25 2FW

01793 296600 • [swindon@mcfarlaneproperty.com](mailto:swindon@mcfarlaneproperty.com) • [www.mcfarlaneproperty.com/](http://www.mcfarlaneproperty.com/)