



14 Winterslow Road

Swindon

£230,000

mforlane
property.com



14 Winterslow Road

Nestled in a sought-after residential area, this 3 BEDROOM TERRACED HOUSE presents an exceptional opportunity for a new owner. Offered with NO ONWARD CHAIN, the property boasts a SPACIOUS LAYOUT comprising a LARGE LIVING DINING AREA, ideal for entertaining guests or relaxing with family. The MODERN FITTED KITCHEN is complemented by a convenient UTILITY ROOM for added functionality. Upstairs, you will find two double bedrooms and a single bedroom, providing ample accommodation for a growing family or home office space. The property also includes a bathroom and separate WC for added convenience.

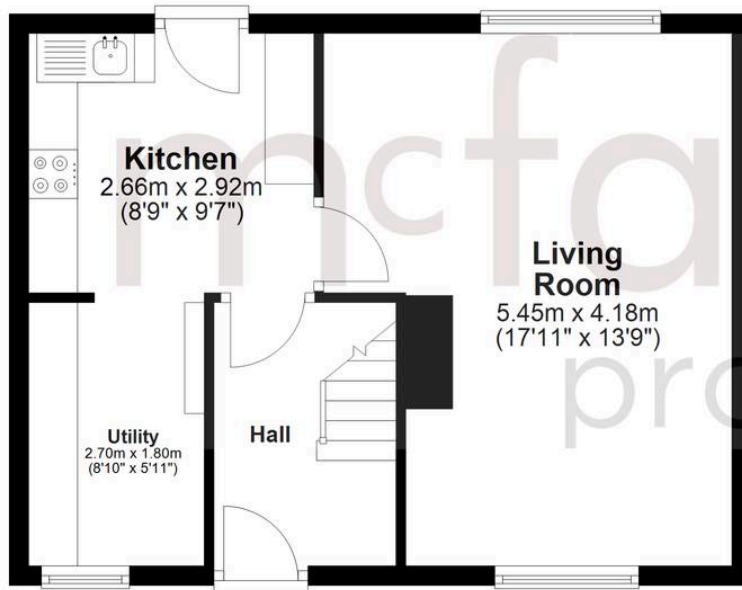
- NO ONWARD CHAIN
- LARGE LIVING DINING AREA
- MODERN FITTED KITCHEN
- TWO DOUBLE AND ONE SINGLE BEDROOM
- UTILITY ROOM
- SHOWER ROOM AND SEPERATE WC
- LARGE PRIVATE REAR GARDEN
- CLOSE TO SEVEN FIELDS WITH LOVELY WALKS AND EASY ACCESS TO FACILITIES INCLUDING SHOPS AND SCHOOLS
- STREET PARKING
- COUNCIL TAX BAND A





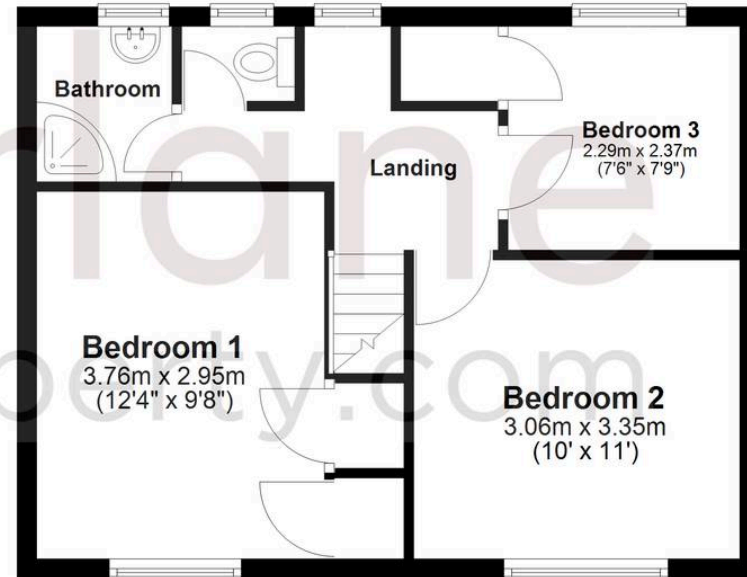
Ground Floor

Approx. 39.1 sq. metres (420.8 sq. feet)



First Floor

Approx. 39.3 sq. metres (422.7 sq. feet)



Total area: approx. 78.4 sq. metres (843.5 sq. feet)

McFarlane Sales & Lettings

North Swindon, Redhouse Village Centre, Swindon – SN25 2FW

01793 296600 • swindon@mcfarlaneproperty.com • www.mcfarlaneproperty.com/