



Saxondale, Clements Way
Shrivenham

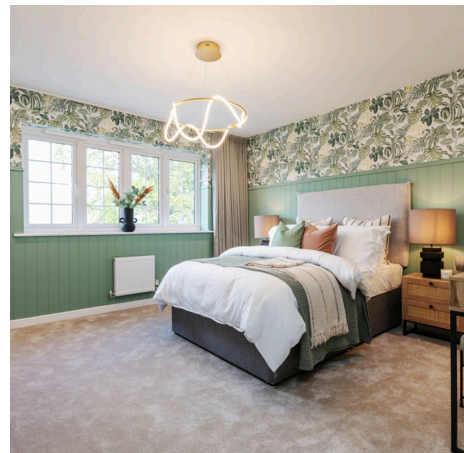


Saxondale, Clements Way

Shrivenham

Introducing this stunning NEW HOME that exemplifies luxurious living with its contemporary design and elegant finishes. Situated in a sought-after location, this detached house boasts a MASTER SUITE complete with a dressing area and en-suite bathroom, providing a private sanctuary within the home. Two additional bedrooms also feature en-suite bathrooms, ensuring ultimate comfort and convenience for the entire family. The heart of the home lies in the spacious FAMILY / KITCHEN / DINING ROOM, perfect for entertaining guests or enjoying quality time with loved ones. A separate LOUNGE offers a cosy retreat for relaxation. This property also includes a single garage and driveway parking, providing ample space for multiple vehicles. Completing the home is a modern family bathroom and a convenient WC, adding to the functionality and appeal of this exceptional residence.

- NEW HOME
- MASTER SUITE WITH DRESSING AREA AND EN-SUITE
- EN-SUITE BEDROOMS TWO AND THREE
- LARGE FAMILY / KITCHEN / DINING ROOM
- SEPARATE LOUNGE
- DETACHED
- SINGLE GARAGE AND DRIVEWAY PARKING



Entrance Hall

Lounge

14' 11" x 12' 2" (4.55m x 3.72m)

Family / Kitchen / Dining

11' 7" x 29' 10" (3.52m x 9.09m)

WC

Landing

Bedroom 1

12' 8" x 12' 4" (3.86m x 3.76m)

Dressing Area

5' 11" x 10' 2" (1.80m x 3.11m)

En-suite

Bedroom 2

11' 8" x 10' 0" (3.55m x 3.04m)

En-suite

Bedroom 3

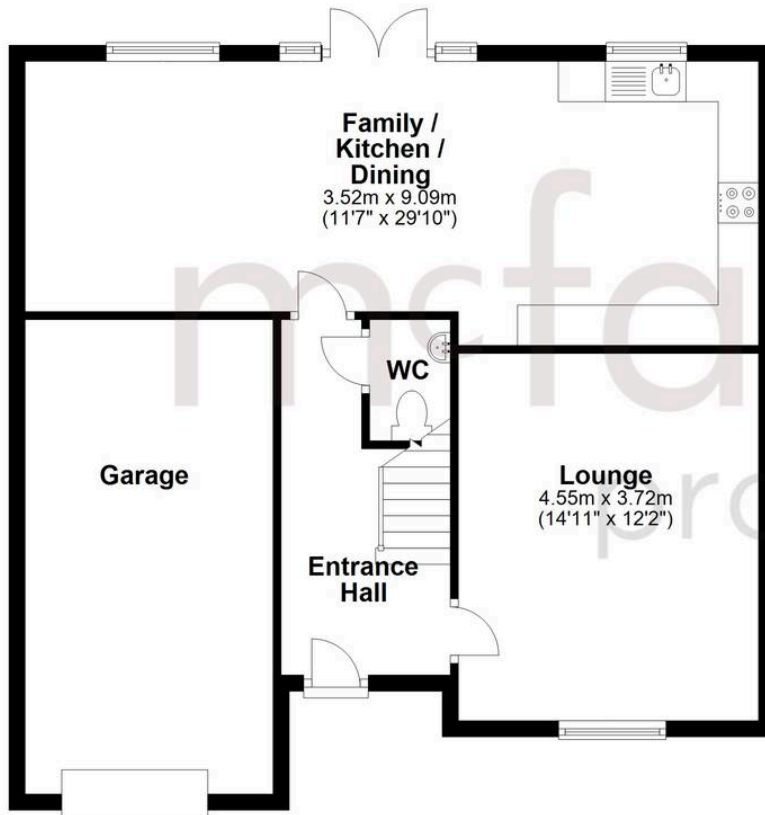
9' 5" x 11' 0" (2.86m x 3.36m)

En-suite

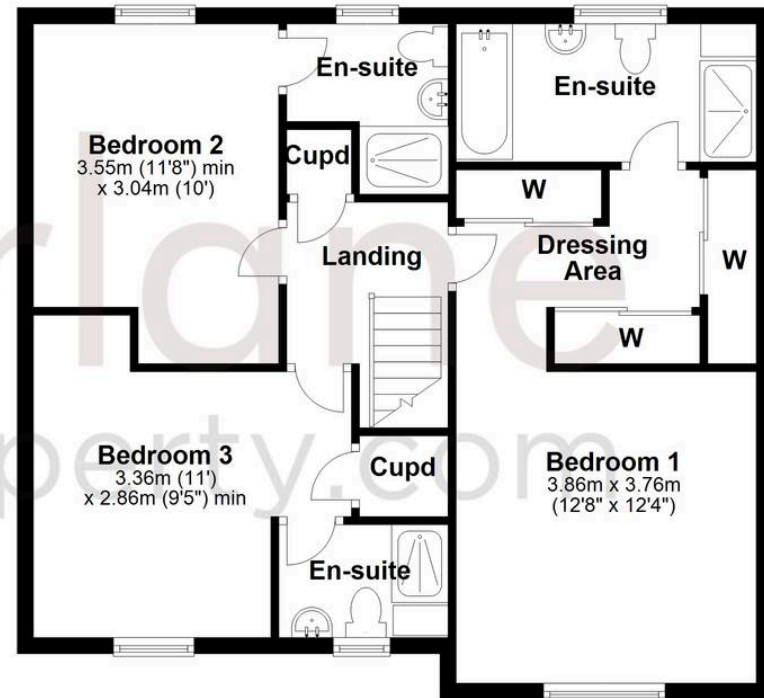
Bathroom



Ground Floor



First Floor



McFarlane Sales & Lettings

McFarlane Sales & Letting, 106 High Street – SN8 1LT

01672 514380 • marlborough@mcfarlaneproperty.com • www.mcfarlaneproperty.com/