



21 Newson Road

Swindon

£315,000



21 Newson Road

Welcome to this delightful 3 Bedroom SEMI-DETACHED HOUSE that exudes charm and comfort. The property boasts a SPACIOUS living room perfect for relaxation and entertainment, a MODERN FITTED kitchen/breakfast room, both an en-suite and family bathroom for convenience, and to top it off, a garage with driveway parking. Newly decorated throughout, this property is ready to welcome its new owners with open arms. And the best part? No chain, making the move-in process a breeze.

Don't miss the opportunity to make this inviting property your new home sweet home!



- Semi-Detached House
- Spacious Living Room
- Modern Fitted Kitchen/Breakfast Room
- En-Suite & Family Bathroom
- Enclosed Rear Garden
- Garage with Driveway Parking
- Newly Decorated Throughout
- No chain

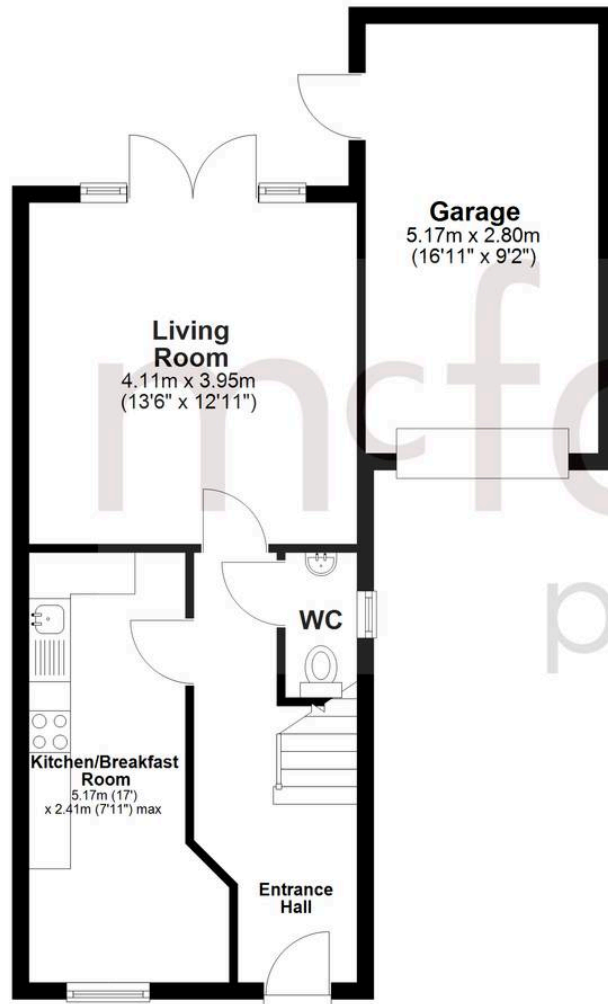






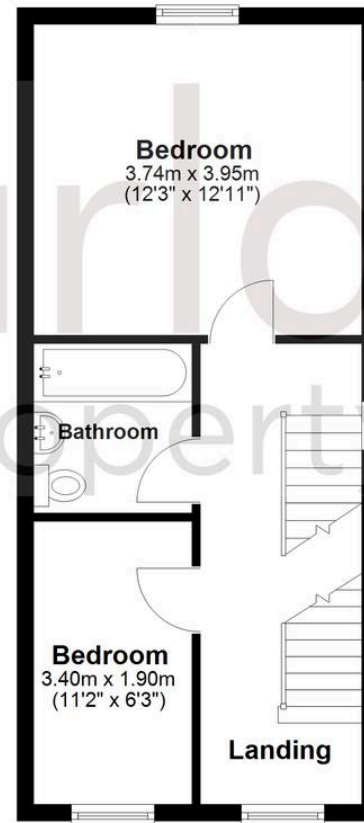
Ground Floor

Approx. 51.8 sq. metres (557.7 sq. feet)



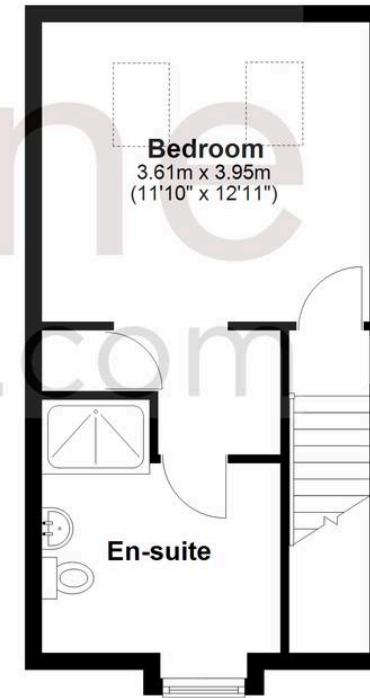
First Floor

Approx. 37.0 sq. metres (398.5 sq. feet)



Second Floor

Approx. 30.3 sq. metres (325.8 sq. feet)



Total area: approx. 119.1 sq. metres (1282.0 sq. feet)

McFarlane Sales & Lettings

North Swindon, Redhouse Village Centre, Swindon – SN25 2FW

01793 296600 • swindon@mcfarlaneproperty.com • www.mcfarlaneproperty.com/