



81 Thames Avenue, Greenmeadow

Swindon

Offers in Region of £330,000

**mcFarlane**  
property.com





## 81 Thames Avenue

Welcome to this fantastic 4-bedroom semi-detached house with no onward chain, located in a sought-after area close to local shops. This property is a gem, having been lovingly extended and maintained by the same family for an impressive 60 years.

Step inside and be greeted by the warmth and charm of this home. The house boasts a conservatory, perfect for enjoying the mature garden views. With four bedrooms, there's plenty of space for the whole family to spread out comfortably.

Parking is a breeze with a garage and driveway, ensuring you never have to worry about finding a spot.

Don't miss the chance to make this your new home sweet home! Call now to arrange a viewing and see for yourself the endless possibilities this property has to offer.



- NO ONWARD CHAIN
- EXTENDED
- MATURE GARDEN
- CONSERVATORY
- 4 BEDROOMS
- GARAGE AND DRIVEWAY PARKING
- CLOSE TO LOCAL SHOPS
- BEEN IN THE SAME FAMILY FOR 60 YEARS

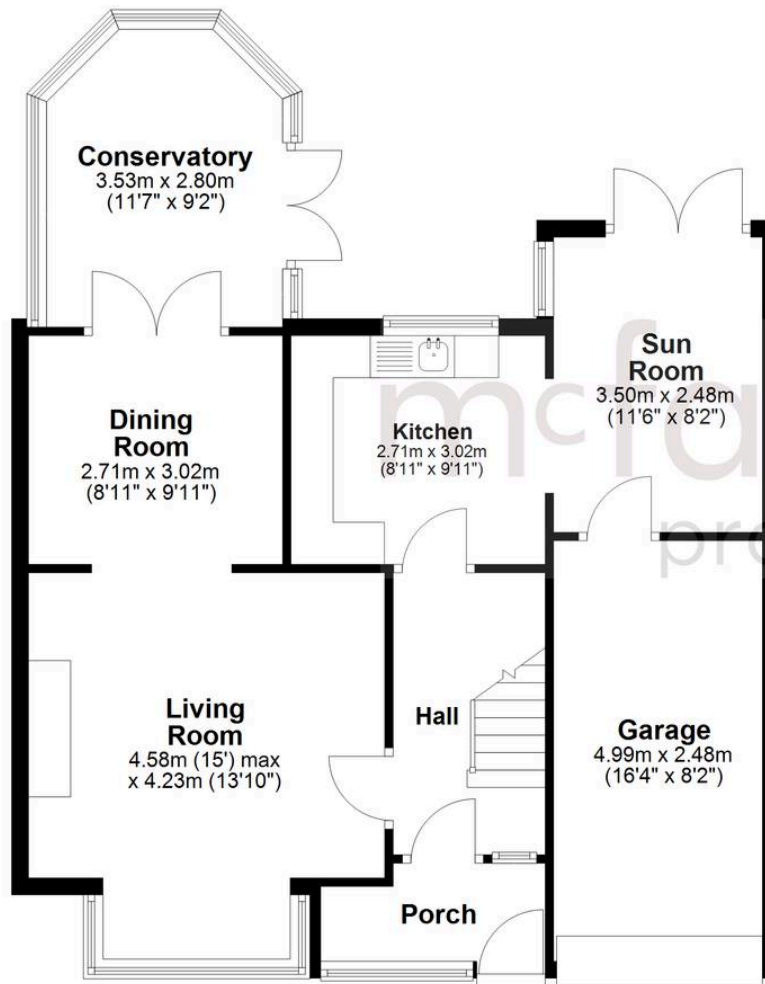






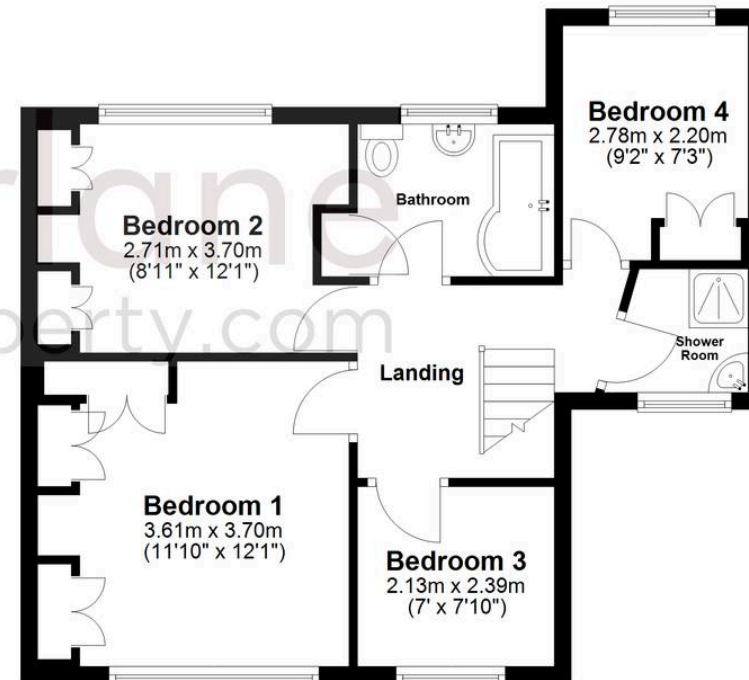
## Ground Floor

Approx. 74.6 sq. metres (803.1 sq. feet)



## First Floor

Approx. 49.0 sq. metres (527.5 sq. feet)



Total area: approx. 123.6 sq. metres (1330.5 sq. feet)

## McFarlane Sales & Lettings

North Swindon, Redhouse Village Centre, Swindon - SN25 2FW

01793 296600 • [swindon@mcfarlaneproperty.com](mailto:swindon@mcfarlaneproperty.com) • [www.mcfarlaneproperty.com/](http://www.mcfarlaneproperty.com/)