



10 Shapland, Tadpole Garden Village

Swindon

£650,000

mcfarlane
property.com



10 Shapland

Tadpole Garden Village, Swindon

Upon entering, the property immediately impresses with its spacious layout and meticulously designed interiors. The heart of the home is the open-plan kitchen/living/dining room, a versatile space that effortlessly caters to both every-day living and entertaining needs. Additionally, two separate reception rooms provide valuable flexibility for various living arrangements, ensuring ample space for relaxation and formal gatherings.

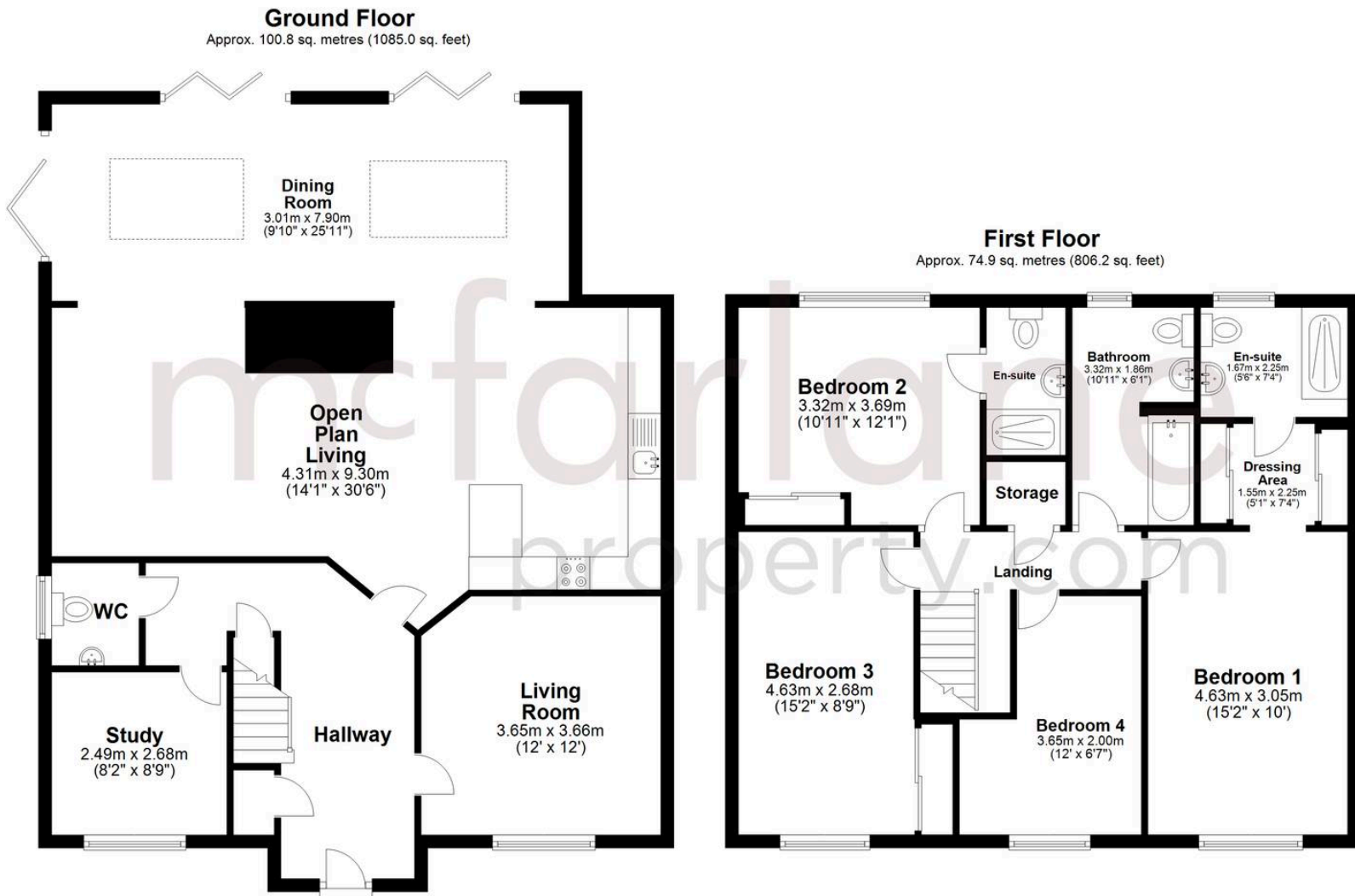
Ascending the staircase, one is greeted by four generously sized double bedrooms, each exuding comfort and sophistication. The master bedroom boasts a dressing room, offering a touch of luxury and practicality, while two en-suites further enhance the convenience and privacy of the living spaces.

Complete with a double garage and driveway parking, this property offers both convenience and security for modern living. Furthermore, the low-maintenance private rear south facing garden provides a serene outdoor retreat, perfect for enjoying peaceful moments or entertaining guests in a secluded setting.



- SIGNIFICANTLY EXTENDED CREST NICHOLSON HOME
- BEAUTIFULLY PRESENTED THROUGHOUT
- OPEN PLAN KITCHEN / LIVING / DINING ROOM
- TWO ADDITIONAL SEPERATE RECEPTION ROOMS
- FOUR DOUBLE BEDROOMS
- DRESSING ROOM TO MASTER
- TWO ENSUITES
- DOUBLE GARAGE AND DRIVEWAY PARKING
- LOW MAINTENANCE, PRIVATE SOUTH FACING REAR GARDEN
- DESIRABLE LOCATION WITHIN THE POPULAR TADPOLE GARDEN VILLAGE





Total area: approx. 175.7 sq. metres (1891.2 sq. feet)

McFarlane Sales & Lettings

North Swindon, Redhouse Village Centre, Swindon - SN25 2FW

01793 296600 • swindon@mcfarlaneproperty.com • www.mcfarlaneproperty.com/