



22 Rysy Court

Swindon

In Excess of £200,000

McFarlane
property.com
property.co



22 Rysy Court

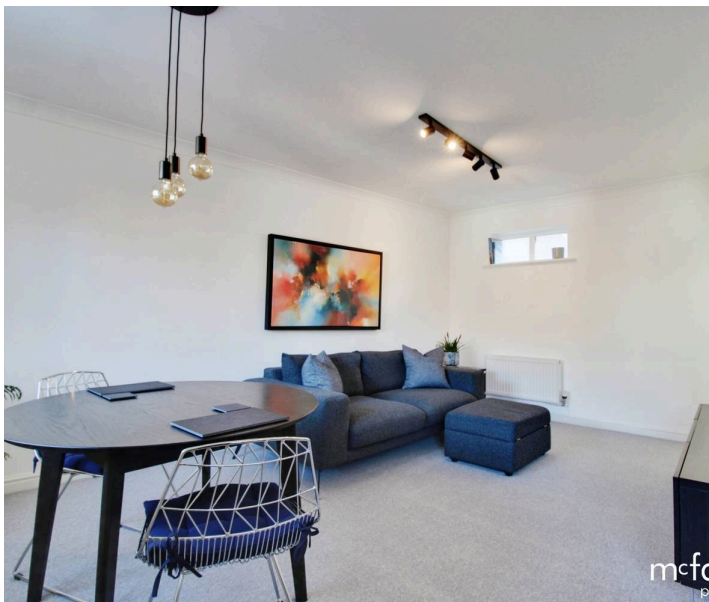
Swindon

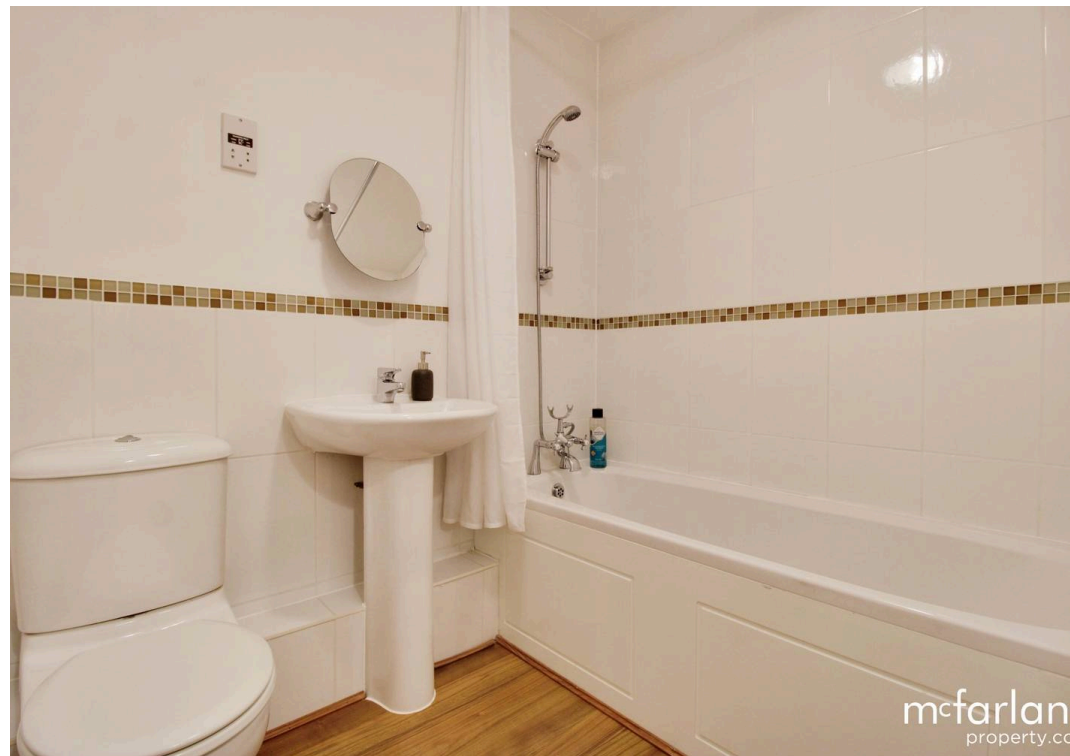
Introducing this SPACIOUS LEASEHOLD COACH HOUSE in a convenient CUL DE SAC LOCATION! This well-presented TWO BEDROOM terraced coach house is perfect for first-time buyers or investors looking for a stylish property. The master bedroom boasts an ENSUITE for added convenience. The open plan LIVING/DINING/KITCHEN area creates a warm and inviting space for relaxation or entertaining guests.

With a handy SINGLE GARAGE equipped with power and light, plus an additional STORE ROOM, storage will never be an issue, in addition there is a newly fitted boiler. Parking in front of the garage provides easy access for residents and visitors alike. The property has the convenience of the amenities of Orbital Shopping Park on its doorstep

Properties of this nature are always popular, so call now to avoid missing out.

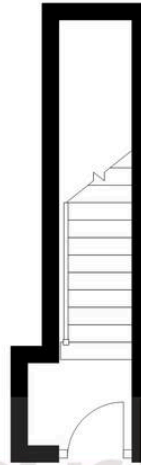
- SPACIOUS COACH HOUSE
- TWO BEDROOMS
- MASTER WITH ENSUITE
- OPEN PLAN LIVING/DINING/KITCHEN
- SINGLE GARAGE WITH POWER AND LIGHT
- NEWLY FITTED BOILER
- PARKING IN FRONT OF GARAGE
- WELL PRESENTED THROUGHOUT
- IDEAL FIRST TIME BUY OR INVESTMENT
- CUL DE SAC LOCATION





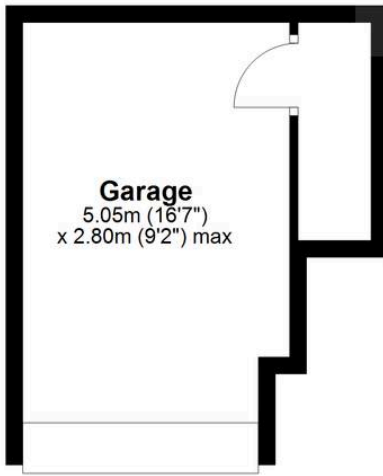
Ground Floor

Approx. 4.7 sq. metres (51.1 sq. feet)



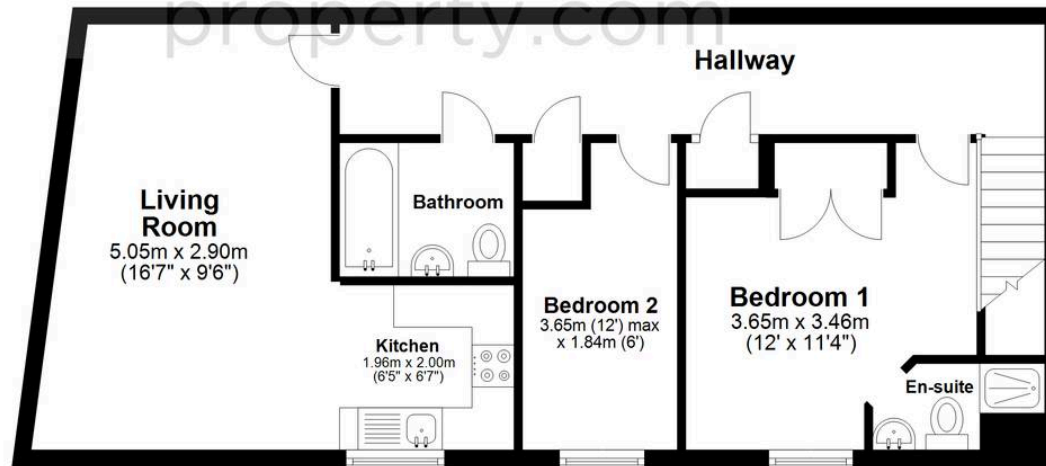
Outbuilding

Approx. 16.1 sq. metres (173.4 sq. feet)



First Floor

Approx. 59.0 sq. metres (635.2 sq. feet)



Total area: approx. 79.9 sq. metres (859.8 sq. feet)

McFarlane Sales & Lettings

North Swindon, Redhouse Village Centre, Swindon – SN25 2FW

01793 296600 • swindon@mcfarlaneproperty.com • www.mcfarlaneproperty.com/