



27 Boatman Close, Swindon

Swindon

£135,000

m<sup>c</sup>farlane  
property.com



## 27 Boatman Close

Swindon, Swindon

Introducing this EXCEPTIONAL 2 Bedroom Second Floor Apartment, located in a sought-after area. Boasting Two Double Bedrooms, a SPACIOUS Living Room, and a SEPARATE Fitted Kitchen, this property offers a harmonious blend of comfort and style. The Master Bedroom features an En-Suite for added convenience, while the Modern Family Bathroom enhances the contemporary feel. With Electric Heating ensuring warmth and efficiency, this thoroughly REFURBISHED apartment also comes with the added benefit of one Allocated Parking Space. Offered with NO ONWARD CHAIN, this property is ready to become your new home sweet home.

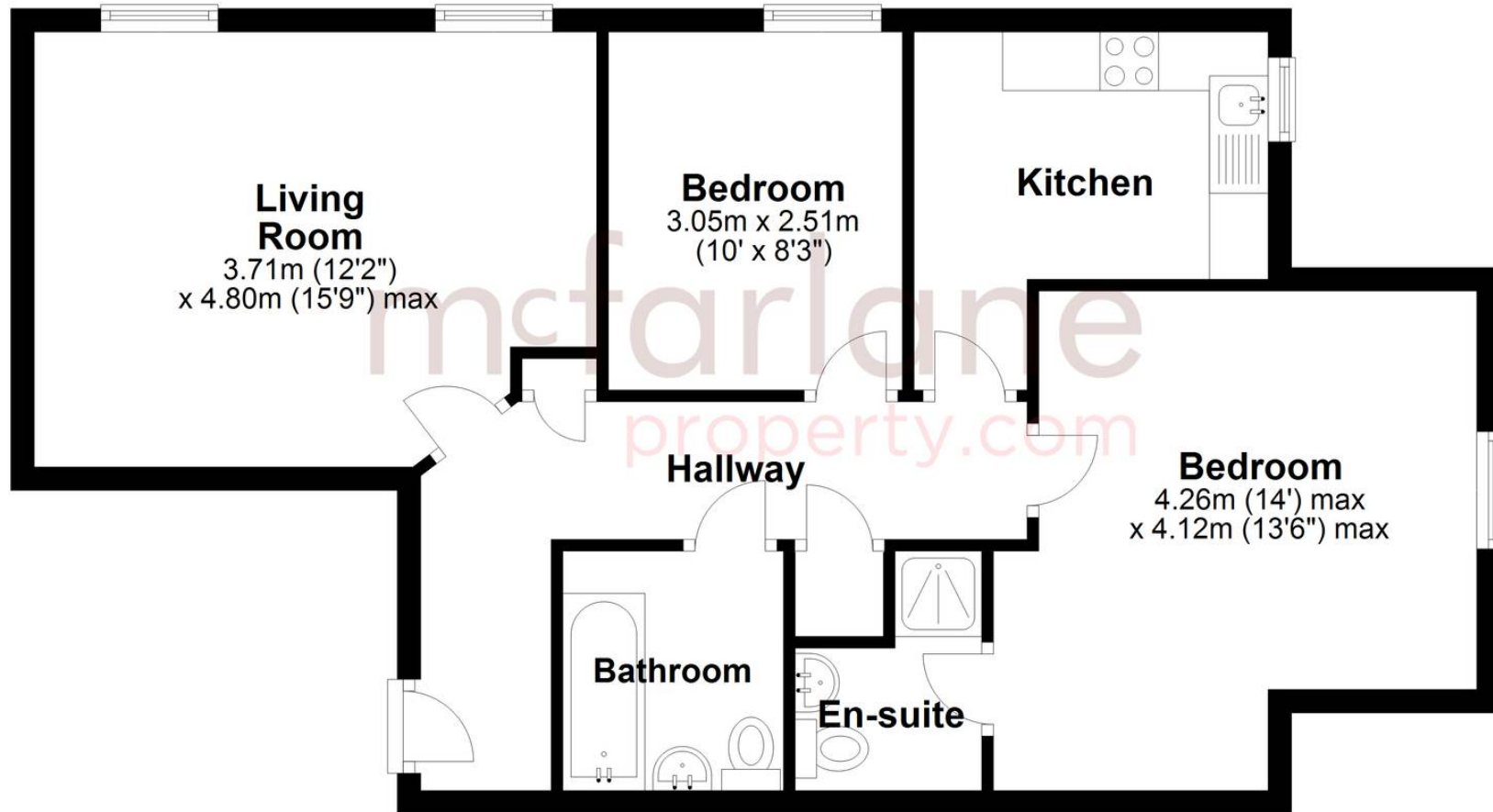
- Second Floor Apartment
- Two Double Bedrooms
- Spacious Living Room
- Separate Fitted Kitchen
- Master Bedroom with En-Suite
- Modern Family Bathroom
- Electric Heating
- One Allocated Parking Space
- Recently Refurbished throughout





## Second Floor

Approx. 65.0 sq. metres (699.7 sq. feet)



Total area: approx. 65.0 sq. metres (699.7 sq. feet)

## McFarlane Sales & Lettings

North Swindon, Redhouse Village Centre, Swindon - SN25 2FW

01793 296600 • [swindon@mcfarlaneproperty.com](mailto:swindon@mcfarlaneproperty.com) • [www.mcfarlaneproperty.com/](http://www.mcfarlaneproperty.com/)