



6 Arabian Avenue, Swindon

Swindon

£320,000

mcfarlane
property.com



6 Arabian Avenue

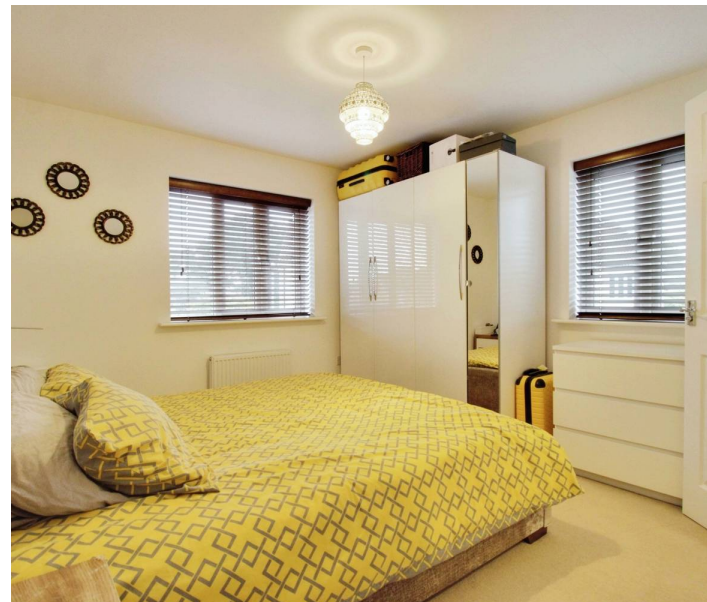
Swindon, Swindon

Step into this MODERN and INVITING three-bedroom home located in the POPULAR area of Moulden View. This END OF TERRACE property boasts not just one, but TWO SINGLE GARAGES, one being directly outside the back gate with parking in-front and the other being across the road under a coach house; offering ample parking and storage space for your convenience.

Inside, the property provides a contemporary design along with spacious living area, kitchen/dining room, downstairs cloakroom and sizeable garden, perfect for a growing family.

The property features a bright and airy master bedroom with an three-piece ENSUITE. The additional two bedrooms are ideal for family members or guests, offering comfort and privacy, along with a spacious main bathroom.

Located in a sought-after neighbourhood, this home offers a blend of comfort and convenience, with shops, schools, and transport links within easy reach. Don't miss out on this fantastic opportunity to make this property your own!

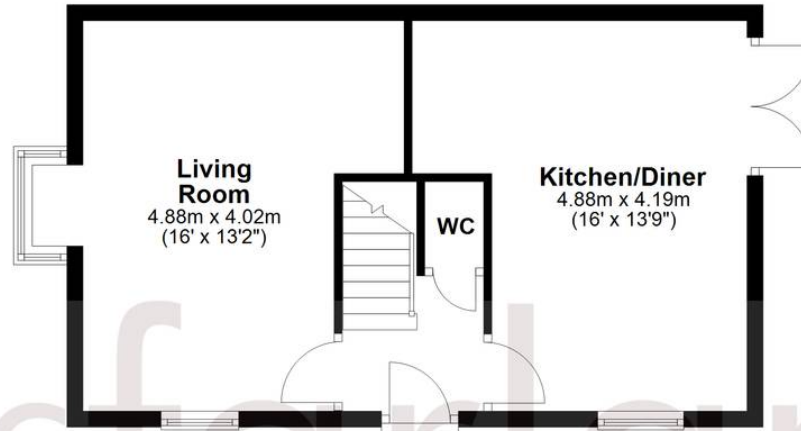


- THREE BEDROOM HOME
- POPULAR LOCATION
- END OF TERRACE
- MODERN INTERIOR
- MASTER WITH ENSUITE
- TWO SEPERATE SINGLE GARAGES



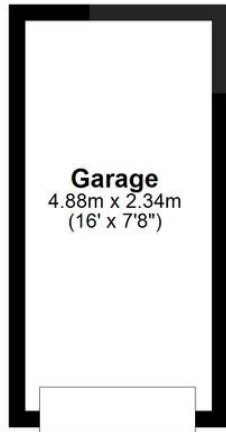
Ground Floor

Approx. 41.0 sq. metres (440.8 sq. feet)



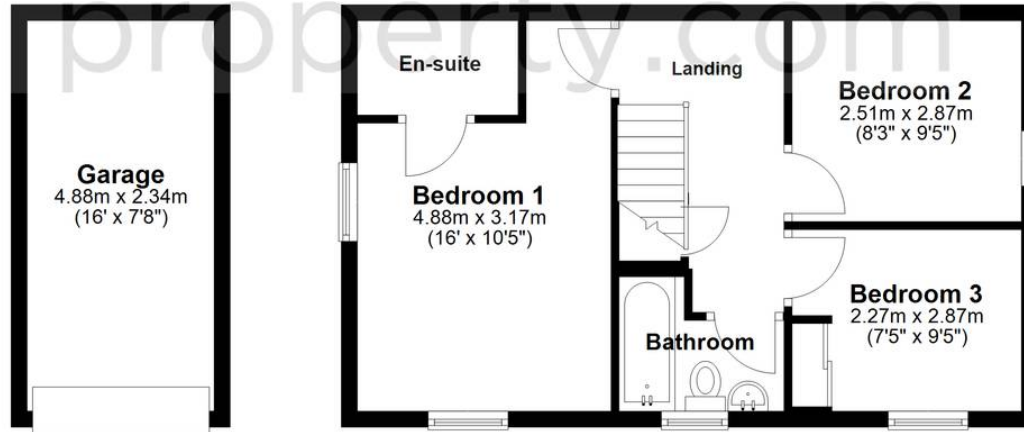
Garage

Approx. 22.8 sq. metres (245.8 sq. feet)



First Floor

Approx. 40.6 sq. metres (437.5 sq. feet)



Total area: approx. 104.4 sq. metres (1124.2 sq. feet)

McFarlane Sales & Lettings

North Swindon, Redhouse Village Centre, Swindon - SN25 2FW

01793 296600 • swindon@mcfarlaneproperty.com • www.mcfarlaneproperty.com/