



Moseley – Backbridge Farm, Sillars Green, Tetbury Road

£314,995

Malmesbury



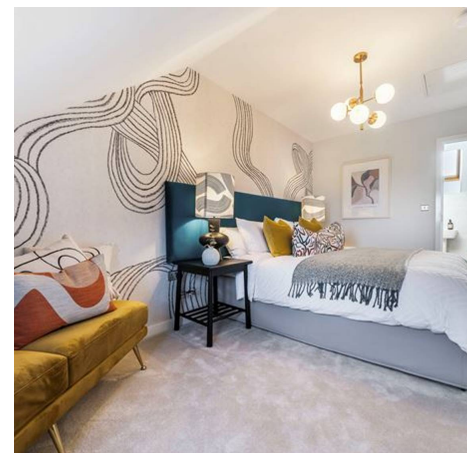
Moseley – Backbridge Farm, Sillars Green

Tetbury Road, Malmesbury

Perfect for the way we live today, the three-bedroom, 2.5-storey Moseley has a modern open plan kitchen/dining/living room with French doors leading into the garden. Upstairs there are three nicely-proportioned bedrooms and a family-sized bathroom. Appealing to families, first-time buyers and young professionals.

Tenure: Freehold

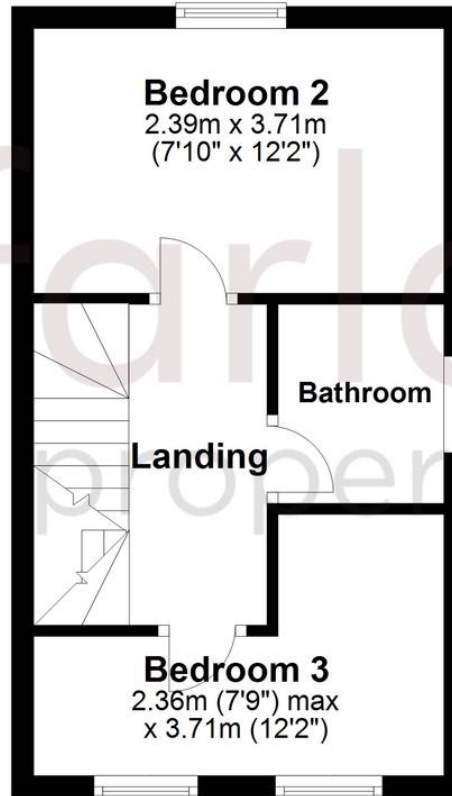
- SOLAR PANELS
- OVER 15FT MAIN BEDROOM
- OPEN PLAN KITCHEN/DINING/LIVING
- THREE BEDROOMS
- 2 PARKING SPACES
- WC
- END TERRACE



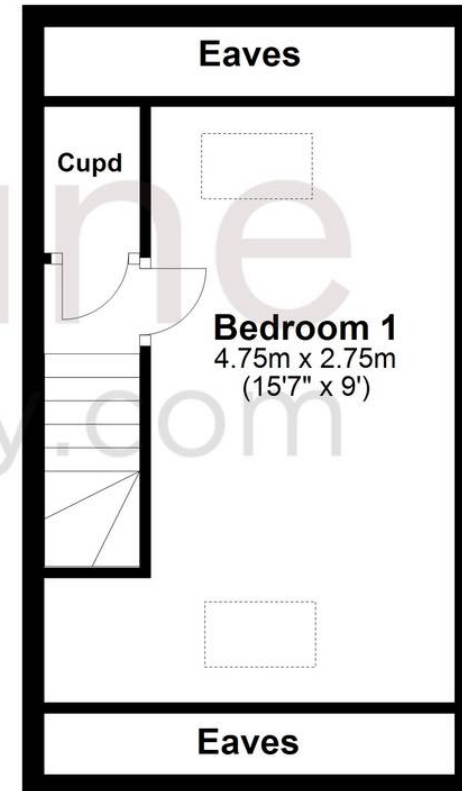
Ground Floor



First Floor



Second Floor



North Swindon Sales

North Swindon, Redhouse Village Centre, Swindon - SN25 2FW

01793 296600 • swindon@mcfarlaneproperty.com • www.mcfarlaneproperty.com/