



Flat 11, The Chestnuts Prospero Way, Swindon
Swindon

Offers in Region of **£150,000**



Flat 11

The Chestnuts Prospero Way, Swindon

Step inside this first floor apartment offering an inviting GREEN OUTLOOK, perfectly situated close to SCHOOLS and AMENITIES. This IMPRESSIVE two-bedroom flat boasts a sunlit CONSERVATORY. This property is IDEAL for a FIRST TIME BUYER looking for a stylish and comfortable living space. The well-proportioned rooms offer ample space for relaxing and entertaining. With NO ONWARD CHAIN, this residence provides a hassle-free move-in experience. The convenience of this home is matched by its attractive location, ensuring a desirable lifestyle for its occupants.

Tenure: Leasehold

EPC Energy Efficiency Rating: B

EPC Environmental Impact Rating: C

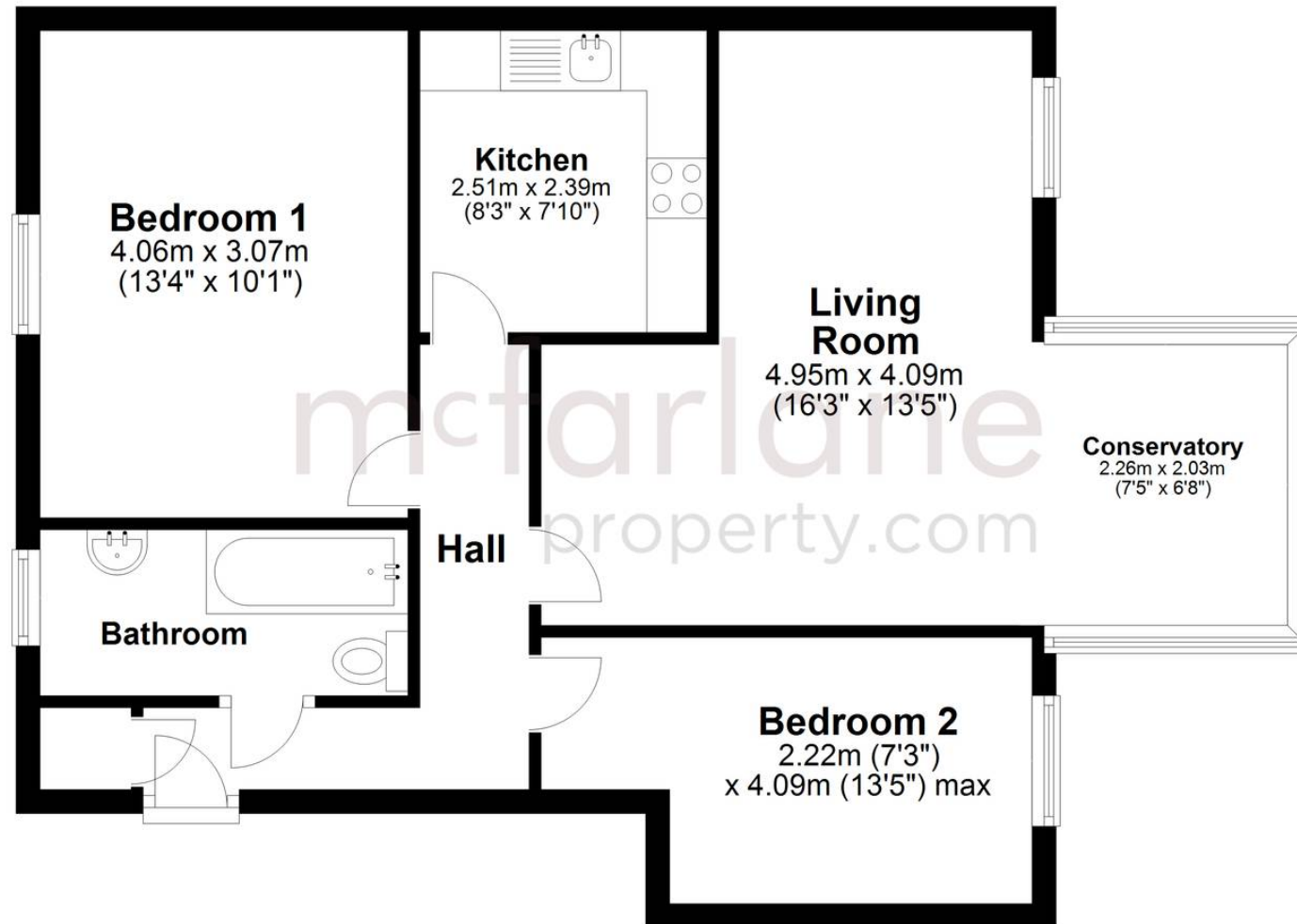
- FIRST FLOOR APARTMENT
- CONSERVATORY
- TWO BEDROOMS
- CLOSE TO SCHOOLS
- CLOSE TO AMENITIES
- GREEN OUTLOOK
- IDEAL FIRST TIME BUY
- NO ONWARD CHAIN





Ground Floor

Approx. 59.9 sq. metres (644.9 sq. feet)



Total area: approx. 59.9 sq. metres (644.9 sq. feet)

McFarlane Sales & Lettings

North Swindon, Redhouse Village Centre, Swindon - SN25 2FW

01793 296600 • swindon@mcfarlaneproperty.com • www.mcfarlaneproperty.com/