



17 Orwell Close, Swindon

Swindon

Offers in Region of £465,000

m^cfarlane
property.com



17 Orwell Close

Swindon, Swindon

Welcome to this fabulous DETACHED, EXTENDED, and IMPRESSIVE 4-bedroom detached house located in a POPULAR LOCATION.

The property features FOUR well-appointed and SPACIOUS BEDROOMS, providing ample accommodation for a growing family or guests. The MASTER SUITE includes a LARGE ENSUITE bathroom, offering both luxury and convenience.

One of the standout features of this property is the IN AND OUT DRIVEWAY, providing convenience and ease of access for residents and visitors alike. The property also comes with a LARGER THAN AVERAGE GARAGE, ensuring ample space for parking and storage.

The location of this property is highly sought-after, known for its convenience to local amenities, schools, and transport links, making it an ideal choice for families and professionals alike.

In addition to its practical layout and desirable location, this property has SOLAR PANELS which have generated an income of over £1000 per year since they were installed.

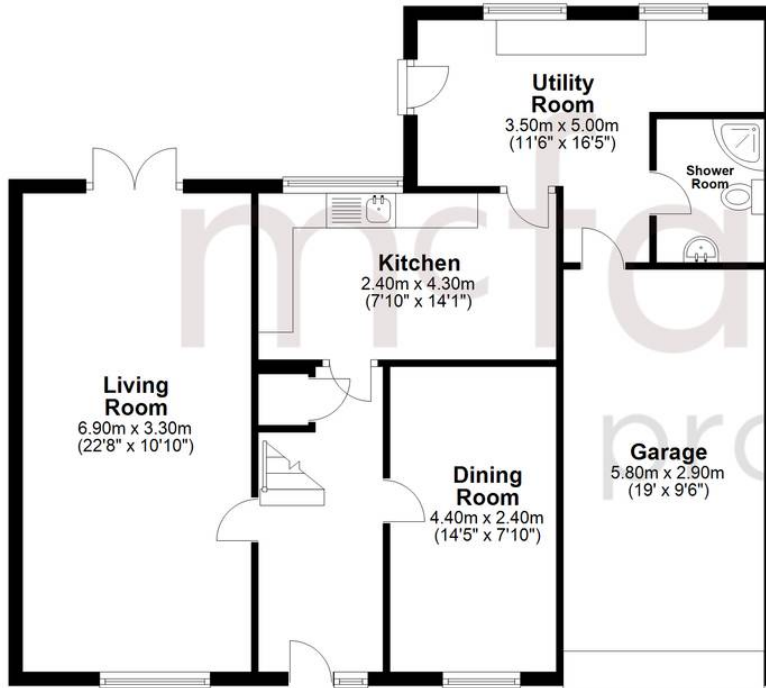
This property offers an excellent opportunity to own a spacious and well-appointed family home in a popular and convenient location. Don't miss out on the chance to make this house your home and experience the lifestyle it has to offer.





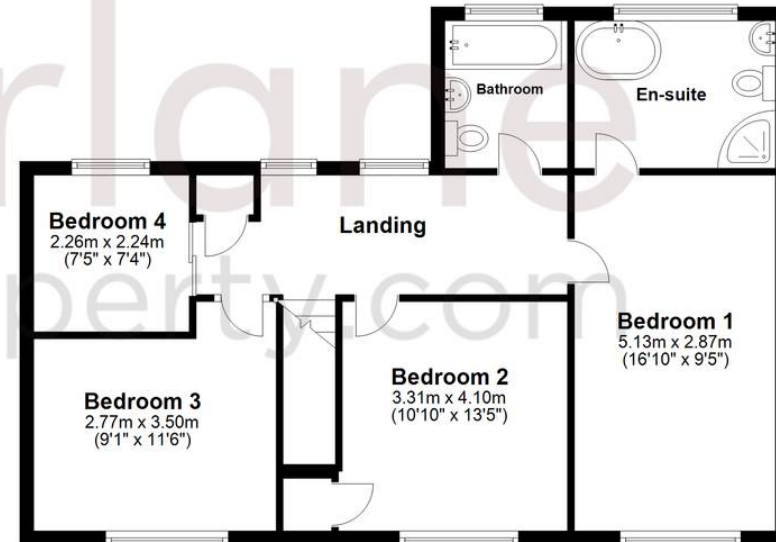
Ground Floor

Approx. 86.3 sq. metres (929.1 sq. feet)



First Floor

Approx. 65.3 sq. metres (702.8 sq. feet)



Total area: approx. 151.6 sq. metres (1631.9 sq. feet)

McFarlane Sales & Lettings

North Swindon, Redhouse Village Centre, Swindon - SN25 2FW

01793 296600 • swindon@mcfarlaneproperty.com • www.mcfarlaneproperty.com/