



152 Hathaway Road, Swindon
Swindon

Offers Over **£300,000**



152 Hathaway Road

Swindon, Swindon

This amazing FAMILY HOME has a stunning, modern fitted, kitchen/breakfast room the whole width of the property. In addition there is a UTILITY ROOM and additional storage, GROUND FLOOR W/C, large living room, FOUR BEDROOMS and a LARGE FRONT AND REAR GARDEN.

Council Tax band: C

Tenure: Freehold

EPC Energy Efficiency Rating: E

EPC Environmental Impact Rating: E

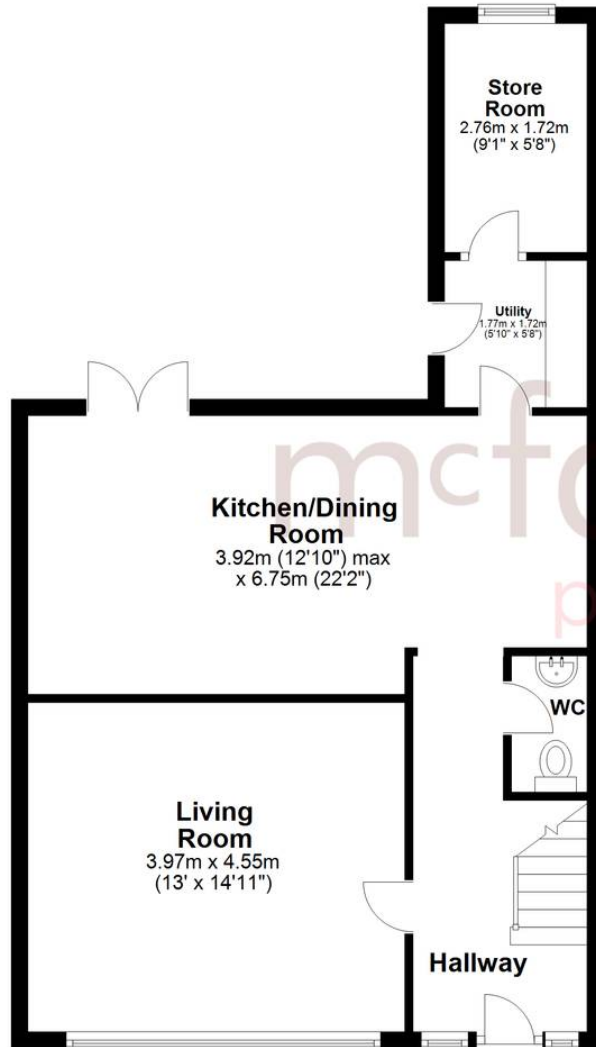
- FOUR BEDROOM SEMI DETACHED
- UTILITY AND STORE ROOM
- GROUND FLOOR W/C
- LARGE FRONT AND REAR GARDENS
- EXCELLENT ROAD LINKS TO A419 and M4
- PEDESTRIANISED FRONT ACCESS
- FOUR PIECE FAMILY BATHROOM
- POPULAR STRATTON LOCATION
- LARGE KITCHEN / BREAKFAST ROOM





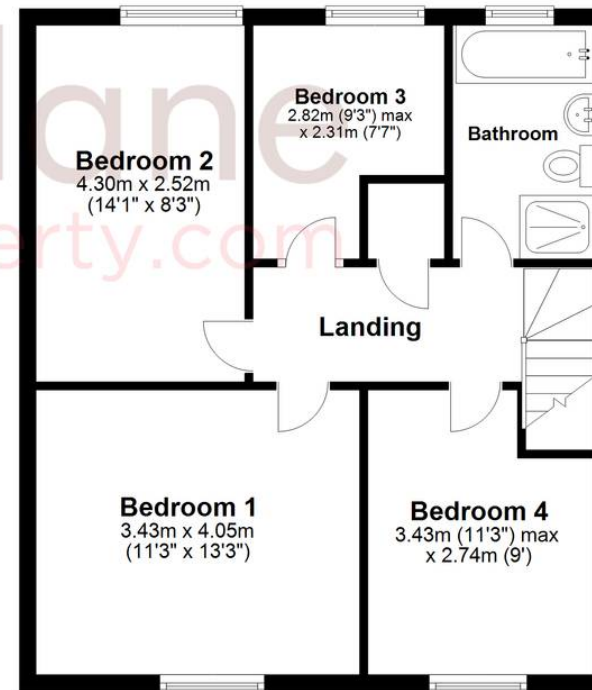
Ground Floor

Approx. 49.7 sq. metres (534.8 sq. feet)



First Floor

Approx. 53.3 sq. metres (573.8 sq. feet)



Total area: approx. 103.0 sq. metres (1108.6 sq. feet)

North Swindon Sales

North Swindon, Redhouse Village Centre, Swindon - SN25 2FW

01793 296600 • swindon@mcfarlaneproperty.com • www.mcfarlaneproperty.com/