

41 Dores Road

Swindon

Offers Over £200,000

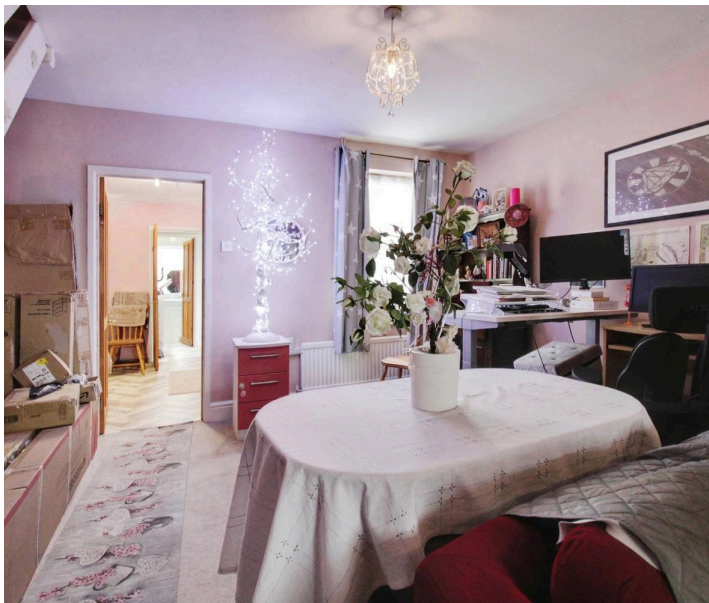
mtarlane  
property.com  
property.com

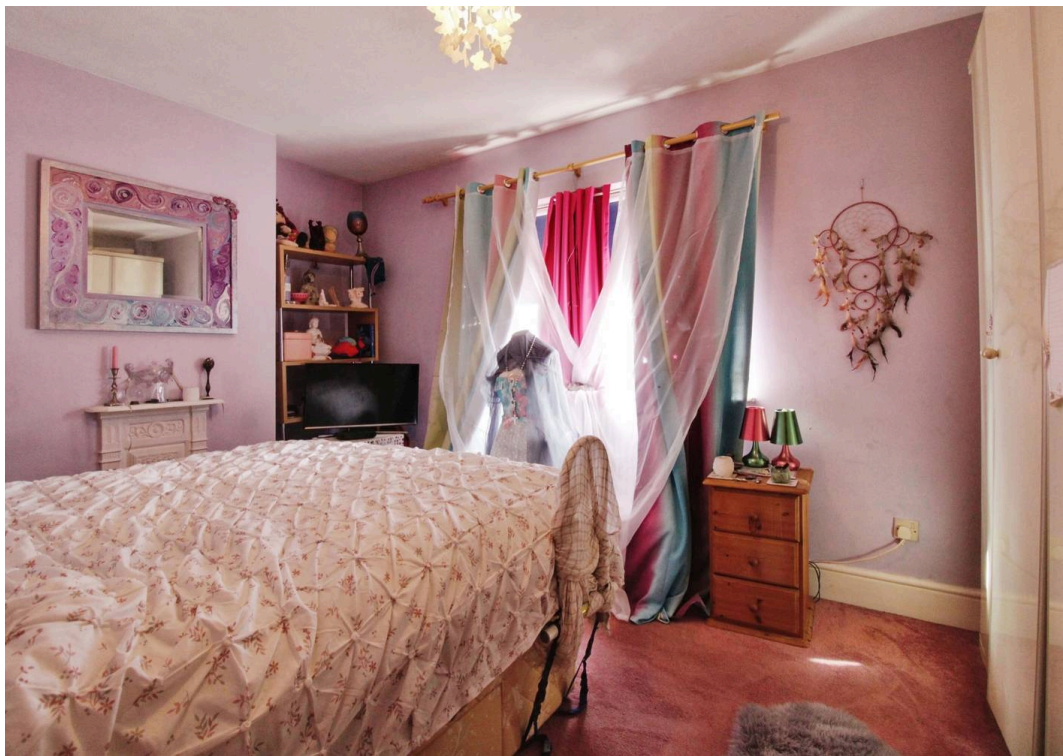


## 41 Dores Road

Situated in the popular residential area of STRATTON, you will find this THREE BEDROOM mid terrace family home. The accommodation comprises Lounge/Dining Room, Kitchen and Bathroom on the ground floor, whilst upstairs there are 3 bedrooms, 2 of which are doubles and come with FEATURE FIREPLACES and a further single bedroom. Externally there is a good sized PRIVATE rear garden. The property benefits from a recently fitted boiler. We expect this property to attract interest so an early viewing is advised. Council Tax Band B Council Tax Estimate £1,710

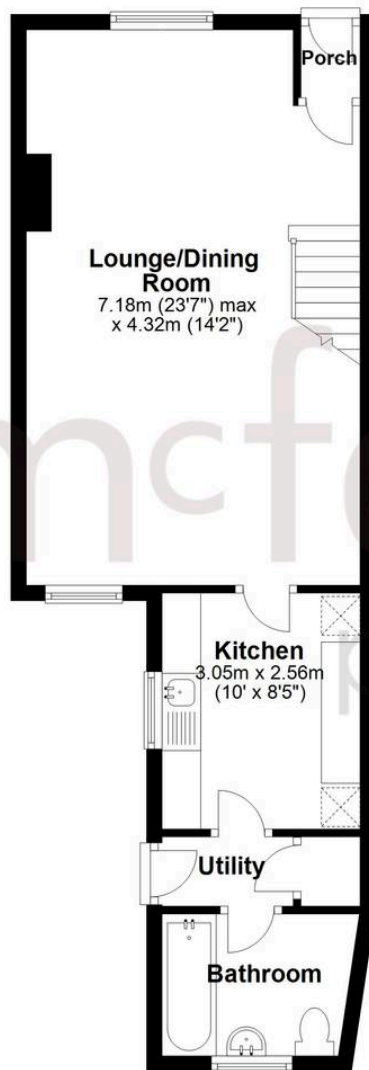
- FEATURE FIREPLACES
- PRIVATE REAR GARDEN
- LARGE LIVING SPACE
- EXCELLENT ROAD LINKS TO A419 AND M4
- NEW BOILER
- POPULAR STRATTON LOCATION
- DOWNSTAIRS BATHROOM





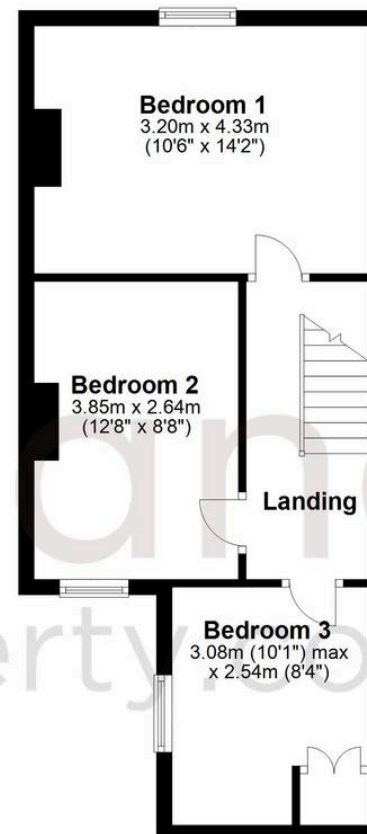
### Ground Floor

Approx. 46.3 sq. metres (498.7 sq. feet)



### First Floor

Approx. 40.9 sq. metres (440.6 sq. feet)



Total area: approx. 87.3 sq. metres (939.2 sq. feet)

## McFarlane Sales & Lettings

North Swindon, Redhouse Village Centre, Swindon – SN25 2FW

01793 296600 • [swindon@mcfarlaneproperty.com](mailto:swindon@mcfarlaneproperty.com) • [www.mcfarlaneproperty.com/](http://www.mcfarlaneproperty.com/)