



**Chapel Lane, Tugby, Leicestershire, LE7 9WA**

**SHELDON  
BOSLEY  
KNIGHT**

LAND AND  
PROPERTY  
PROFESSIONALS



# Property Description

For Sale By Public Auction.

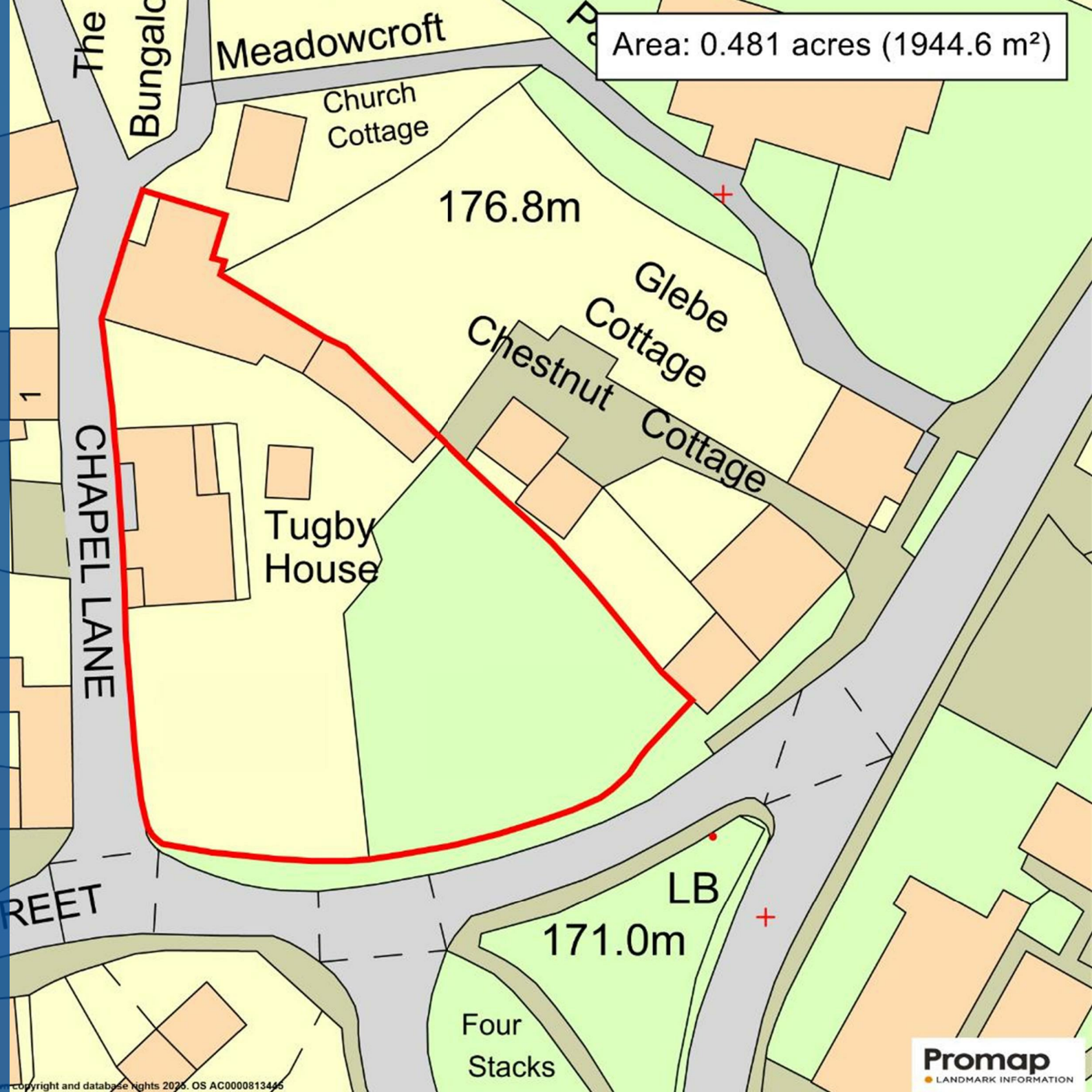
An exceptional property, offering huge amounts of potential for development (subject to necessary planning permissions), located in the heart of Tugby Village, Leicestershire. This mixed-use property offers a wealth of historic grandeur, occupies a generous plot just under half an acre and has been in the seller's family ownership since the start of the 20th century. Alongside the residential property stands the former local butchers' shop and slaughterhouse for the village, which up till fairly recently was still a trading family business and is included within the estate being sold.

The residential property in brief has an entrance porch and hallway, sitting room, formal lounge, dining room, kitchen, pantry, storage room and access to the old shop space. Ascending to the first floor four spacious bedrooms can be found, family bathroom, dressing area and storage room.

The commercial unit in brief has a shop front with storage, kitchen, workspace, cold room, wc, slaughterhouse, cutting room leading to additional storage rooms and two lairage rooms.

Tugby is recognised for its historical interest, with buildings reflecting various periods and styles, including vernacular architecture with stone and brick construction. Tugby and Keythorpe is a civil parish comprising the village of Tugby and land surrounding Keythorpe Hall, Hall Farm and Lodge Farm in the Harborough district of Leicestershire, England. The parish covers around 2,200 acres, situated 7 miles west of Uppingham, and 12 miles east of Leicester. We are informed by our seller that the village itself has a wonderful residential community and is complete with an array of local amenities.

Auction Details:  
Sheldon Bosley Knight Land and Property  
Auction  
Wednesday 30th July at 6.00 pm  
Hinckley Golf Club



Area: 0.481 acres (1944.6 m²)

176.8m

Glebe Cottage

Chestnut Cottage

Tugby House

CHAPEL LANE

MAIN STREET

LB  
171.0m

Four  
Stacks





## Key Features

- For Sale By Public Auction
- Wednesday 30th July 2025, 6.00pm at Hinckley Golf Club
- Prime Development Opportunity (Subject To Planning Permissions)
- Generous Plot Size Of 0.481
- Mixed Use Of Residential & Commercial
- Former Village Butcher's Shop & Slaughterhouse
- Four Bedrooms With Additional Multi-Use Rooms
- Off-Road Parking
- Lovely Village Location & Community

**Auction Guide**  
**£365,000**



### Auction Terms

The property will unless previously withdrawn, be sold subject to the Special and General Conditions of Sale, which have been settled by the Vendor's Solicitor and are contained within the Auction Legal Pack. This pack is available to download to registered bidders. The conditions may also be inspected in the Sale Room at the time of the sale but they will not then be read. The purchaser shall be deemed to bid on those terms whether he shall have inspected the Conditions or not.

The sale of this property will take place on the stated date by way of a live, in-room auction and is being sold as Unconditional with a Fixed Fee. Some sellers may consider a pre-auction offer, and the Lot may be sold or withdrawn before the auction.

Binding contracts of sale will be exchanged at the point of sale.

### Auction Deposit and Fees

The following deposits and non-refundable auctioneer's fee apply. These will need to be paid to the auctioneer on exchange of contracts:

- 10% deposit (subject to a minimum of £5,000)
- Buyer's Premium of £1,500 inc. VAT
- Search pack of £336 inc. VAT

There may be additional costs listed in the Special Conditions of Sale, which will be available to view within the Legal Pack. These additional costs will be payable to the seller's solicitor on Completion. You must read the Legal Pack carefully before bidding.

### Guide Price & Reserve Price

The guide price offers an indication of the price below which the vendor is not willing to sell. It is not necessarily the exact final sale price and is subject to change prior to and up until the day of the auction. Any change in the guide price will reflect a change in the reserve (a figure below which the auctioneer will not be able to sell). The reserve can be expected to be set within the guide range or not more than 10% above a single-figure guide. (RICS Common Auction Conditions 4th Edition).

### Plans

Plans shown are for identification purposes only.

### Services

The auctioneer understands that mains water, drainage and electricity are connected to the property, though these services have not been tested. Buyers are advised to make their own enquiries to confirm the connected services.

### Directions

What Three Words: ///dwarf.dampen.list

### Tenure and Possession

The property and land are freehold. Vacant possession will be given upon completion which is normally 20 working days after the auction. Please refer to the Legal Pack for further details.

### Bidder Registration and Auction Legal Pack

If you would like to register to bid, please head to the following link: [passport.eigroup.co.uk/bidder-registration/sheldon-bosley-knight/](https://passport.eigroup.co.uk/bidder-registration/sheldon-bosley-knight/)

You can opt to bid in person, online, by telephone or by proxy. You will also be able to download the Auction Legal Pack for the Lot you are interested in here: [auctioneertemplates.eigroup.co.uk/guides.aspx?a=1236&c=sbk](https://auctioneertemplates.eigroup.co.uk/guides.aspx?a=1236&c=sbk)

The Auction Passport requires you to input the details of your solicitor. If you would like to use our own preferred solicitors, please let us know and I will arrange for a quote to be sent to you.

If this is the first time you have accessed Auction Passport, just press the green button on the left-hand side 'Click here to sign up for free' to create a new account.

### Legal Documents & Additional Costs

It is essential bidders check the legal documents prior to bidding and take professional advice. Special Conditions of Sale can contain additional costs (that is costs over and above the price the lot is 'knocked down' at) and bidders are deemed to be aware of any additional costs prior to bidding.

### Viewings

All viewings are by appointment only through the Auction Department





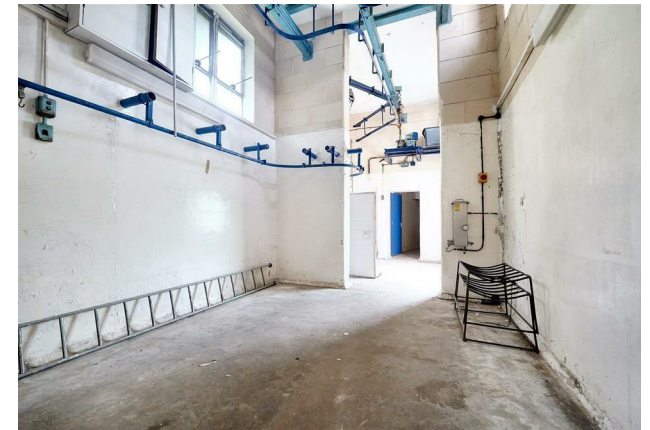
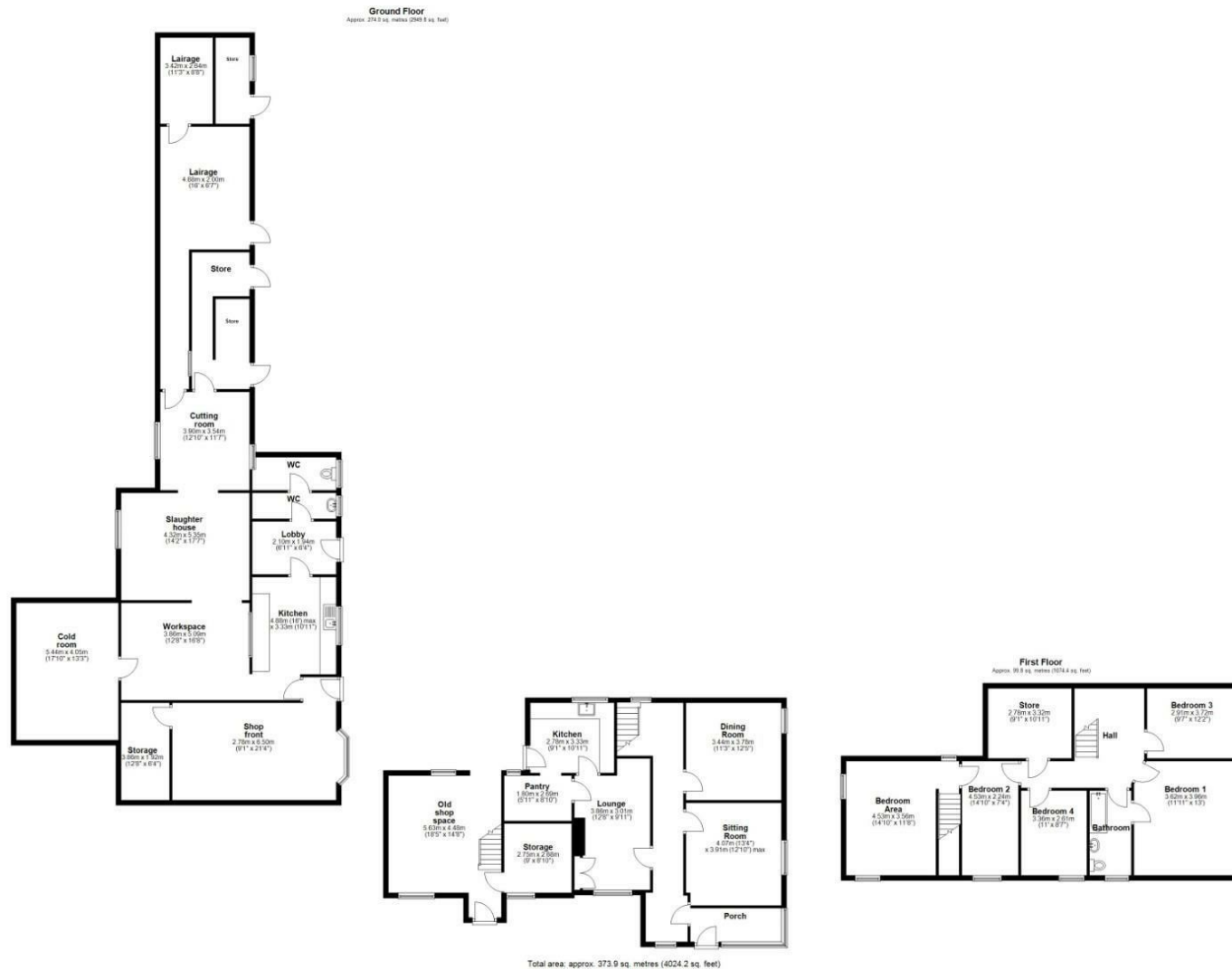








# Floorplan



EPC Rating - F

Tenure - Freehold

Council Tax Band - E

Local Authority  
Leicestershire

We routinely refer clients to both our recommended Legal Firm and a panel of Financial Services Providers. It is your decision whether you choose to deal with these companies. In making that decision, you should know that we receive a referral fee



# Our Testimonials

Excellent sales team. Chloe, Christian and Leanne supported me throughout a difficult sale and at a very competitive fee. They really know their stuff and I wouldn't hesitate to recommend SBK Evesham. Thank you!

Louise Orchard

Fantastic and easy experience. Nothing was too much to ask and the team were incredible in providing support and reassurance in our first move. Everything was communicated to us professionally and efficiently. Massive thanks to the team for making this move possible.

Anna Stoumann

We found our dream home and needed to sell our house to make an offer. Andrew and the team at Sheldon Bosley knight Leamington were fantastic. They managed to value our home, got photos and floor plans sorted, advertised, completed viewings and we had an above asking price offer accepted in one and a half weeks from first contacting them!! Communication from both Andrew, Sophie and the team plus through their online portal was great throughout. Honestly couldn't have asked for more.

Charlie Foley

Both Amy and Amelia were incredibly helpful and proactive throughout the purchase of our property. The commitment that they both showed to the sellers and us as buyers was second to none and meant that any moving bumps were successfully managed. We would wholeheartedly recommend them to friends and, if we were to consider moving again, would certainly use them.

Emmah Ferguson

I had a great experience while purchasing a house with Sheldon Bosley Shipston on stour. From start to finish they have done everything they can to help and been great with communication. I dealt with Kate and Morgan who were both lovely but I'm sure it was a team effort behind the scenes. I felt like they were there for me and supportive. Thank you to you all!

Georgie Smith

Very helpful and friendly staff. They were happy to provide names of local tradesmen which will be a great help. Would highly recommend.

Jane Harms

A stress free procedure due mainly to the estate agent Rockwell Allen. There was excellent communication and marketing with the bonus of getting the asking price.

Susan

Millie has been absolutely brilliant from the word go. The whole experience has been a breath of fresh air and the complete opposite from our last dealings with an estate agent. Thank you Millie for all your hard work and advice, couldn't be bettered.

Kate

We couldn't recommend Sheldon Bosley Knight more. After having a house sale fall through previously, we were very nervous about making our offer, but the lovely Annette and Sara guided us through everything with ease and made us feel so comfortable with our decisions. We got the house of our dreams, and we are absolutely delighted! They made us feel like friends and we would recommend them to anyone looking to buy their perfect home.

Jen Singleton

To book a free no obligation market appraisal of your property contact your local office.

[sheldonbosleyknight.co.uk](http://sheldonbosleyknight.co.uk)



SALES

LETTINGS

PLANNING &  
ARCHITECTURE

COMMERCIAL

STRATEGIC  
LAND

NEW  
HOMES

BLOCK  
MANAGEMENT

RURAL



#### DISCLAIMER

All fixtures and fittings mentioned in these particulars are included in the sale, all others in the property are specifically excluded. Photographs are reproduced for general information and it must not be inferred that any item is included for sale with the property. These particulars are thought to be materially correct. Their accuracy is not guaranteed and they do not form part of any contract.