



54, Dorset House, Gloucester Place, Marylebone, London, NW1 5AE  
Asking Price Of: £1,150,000



# 54, Dorset House, Gloucester Place, Marylebone, London, NW1 5AE

## DESCRIPTION

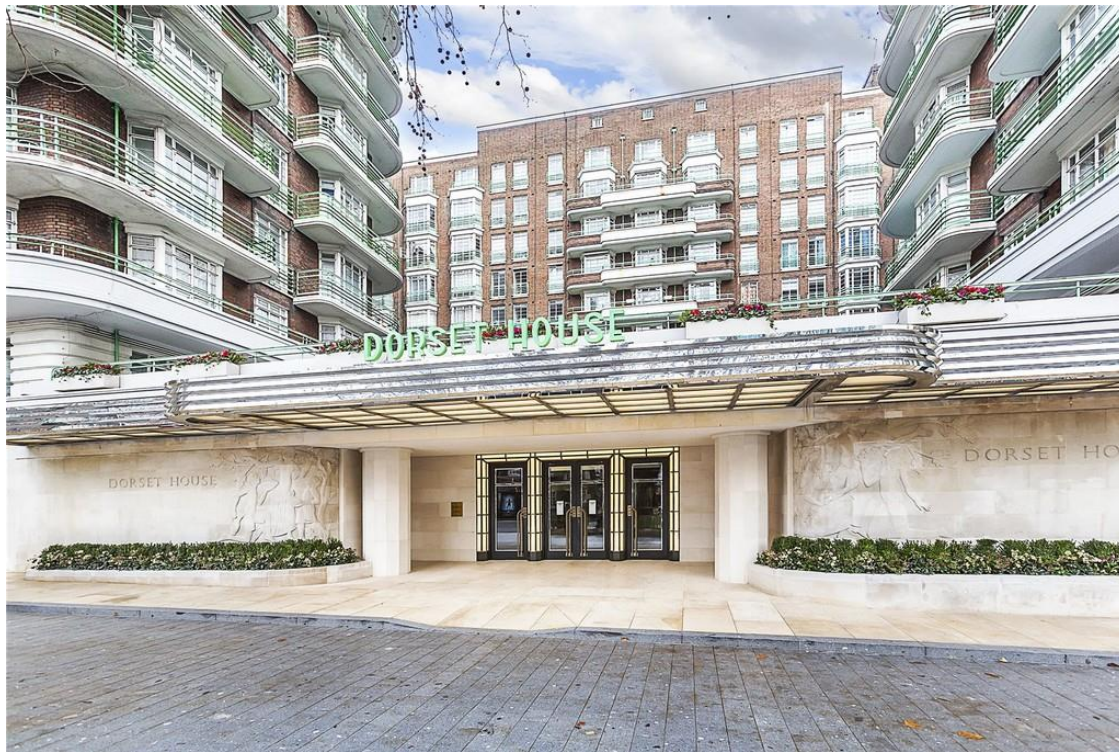
A spacious 2 bedroom 2 bathroom apartment in this sought after development in Marylebone. This 3rd floor property offers 24 hours concierge with lift access, moments away from Baker Street underground station and Marylebone train station. This spacious apartment consists of a large reception, which floods with light from the large west facing windows, a principal bedroom with built in wardrobes and an en-suite bathroom with access to a private balcony.

Dorset House is a popular Art Deco style building located just moments from the green open spaces of Regent's Park and Baker Street underground station (Hammersmith & City, Bakerloo, Jubilee, Circle and Metropolitan), offering easy access across London. Marylebone station is also a short walk away whilst the building has 24-hour portage services and inclusive heating and hot water. Set within easy reach of a variety of local amenities that include sup

## KEY FEATURES

- Spacious apartment
- Two double bedrooms with balconies
- 24 hour Concierge
- Lift Access
- Moments from Baker Street Station & Marylebone Station
- Moments away from Regent's Park
- Bright reception

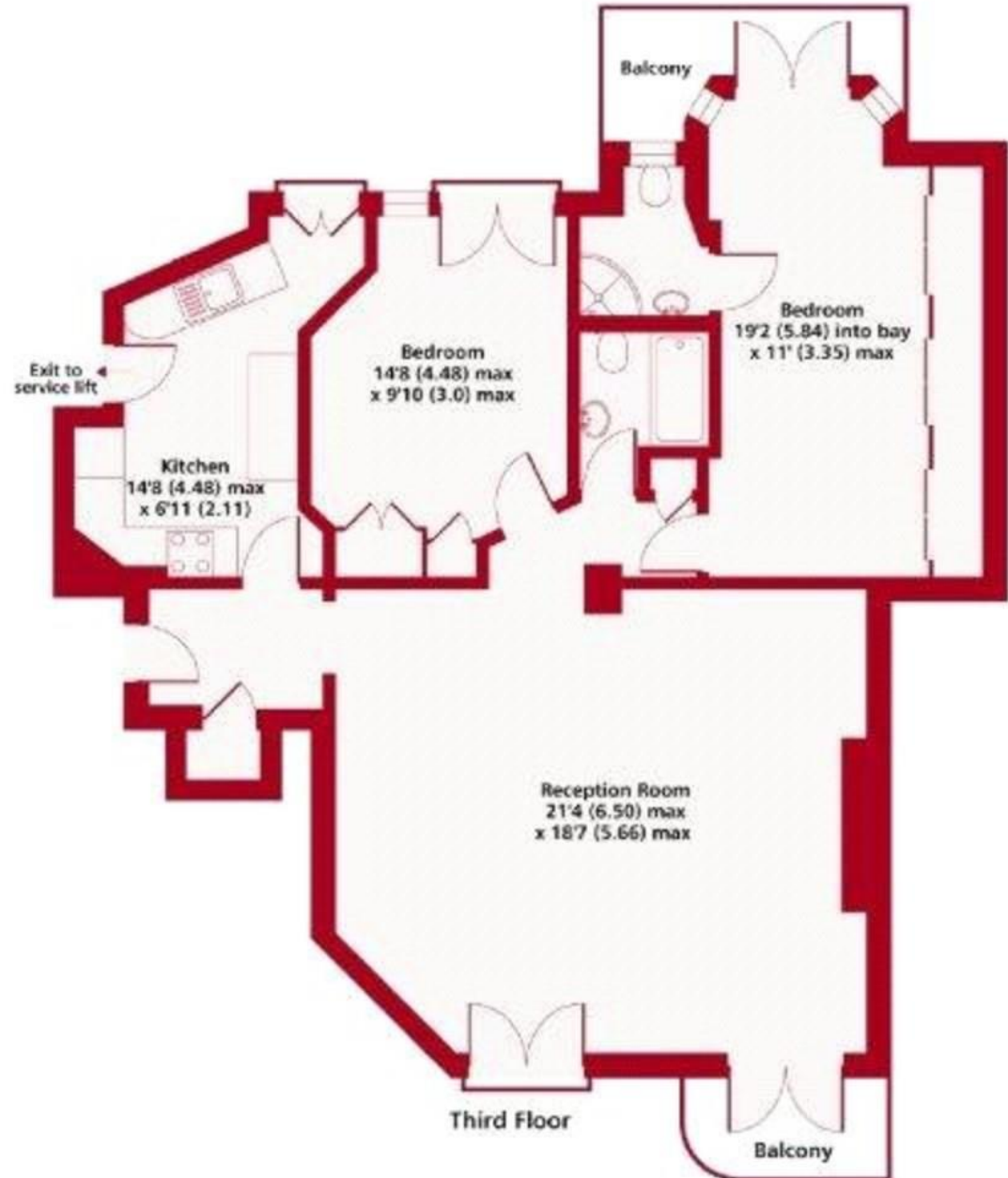






Score	Energy rating	Current	Potential
92+	A		
81-91	B		
69-80	C		78   c
55-68	D	66   d	
39-54	E		
21-38	F		
1-20	G		

Gloucester Place NW1  
Gross Internal Floor Area 991 sqft 92.1 sqm



### ADDITIONAL INFORMATION

**Tenure:** Leasehold

**Local Authority:** Westminster City Council

