



12, 35 Buckingham Gate, London, SW1E 6PA

Asking Price Of: £759,500

Sherwoods



12, 35 Buckingham Gate, London, SW1E 6PA

Position Perfect | Stylish Kitchen | One Bedroom | Quality Bathroom | Balcony | Good sized reception

DESCRIPTION

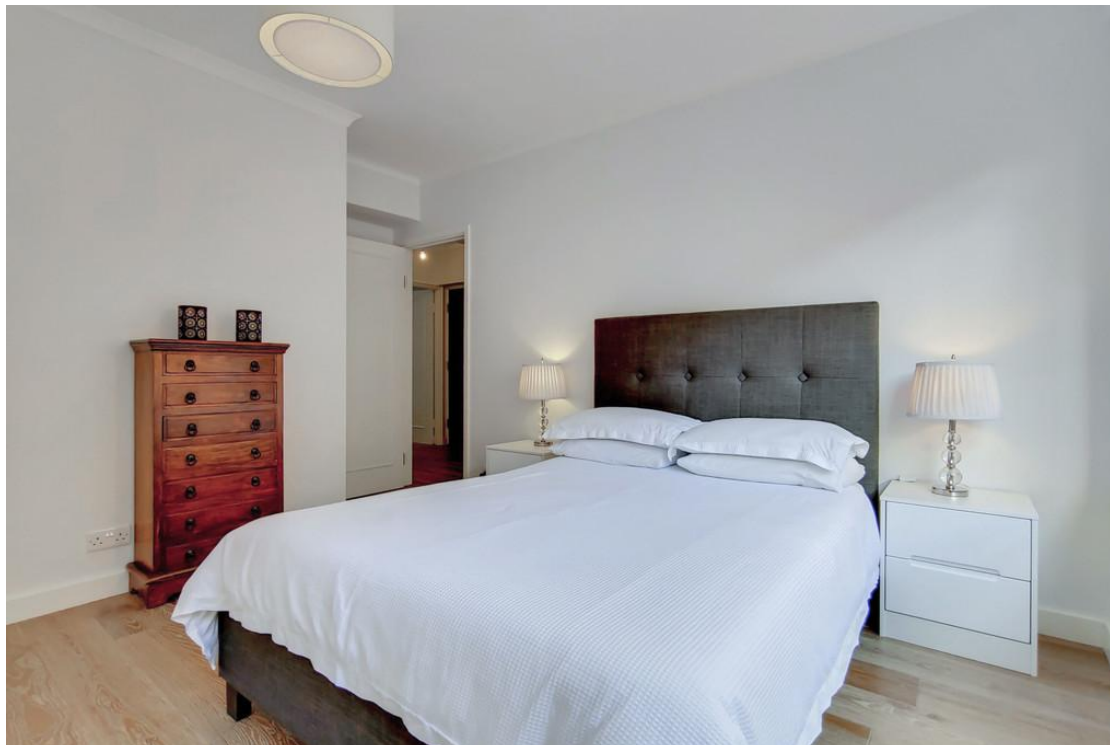
Sherwoods are proud to present this bright upmarket one bedroom flat, situated in a secure ported block, this apartment is position perfect for either an owner occupier or investor with excellent rental returns. Great sized reception room with a balcony, large bedroom with plenty of storage and a stylish kitchen

Buckingham Gate is a wonderful location with St. James's Park tube station and Victoria Station nearby and close to St. James's Park, Green Park and Buckingham Palace.

KEY FEATURES

- Position Perfect
- Stylish Kitchen
- One Bedroom
- Quality Bathroom
- Balcony
- Good sized reception room
- Portered Building







Score	Energy rating	Current	Potential
92+	A		
81-91	B		82 B
69-80	C		
55-68	D	58 D	
39-54	E		
21-38	F		
1-20	G		

ADDITIONAL INFORMATION

Tenure: Leasehold

Local Authority: Westminster City Council

		Buckingham Gate, SW1E	GROSS INTERNAL AREA 49.8 Sqm / 536.2 Sqft
CAPTURE DATE 11/03/2020		LASER SCAN POINTS 27,405,223	

