



702, The Hansom (Davis House), 4 Bridge Place, London, SW1V

1AF

01753



# Central location | Lift access | Right next to Victoria Station | Concierge | Open Plan Kitchen | Spacious apartment

---

## DESCRIPTION

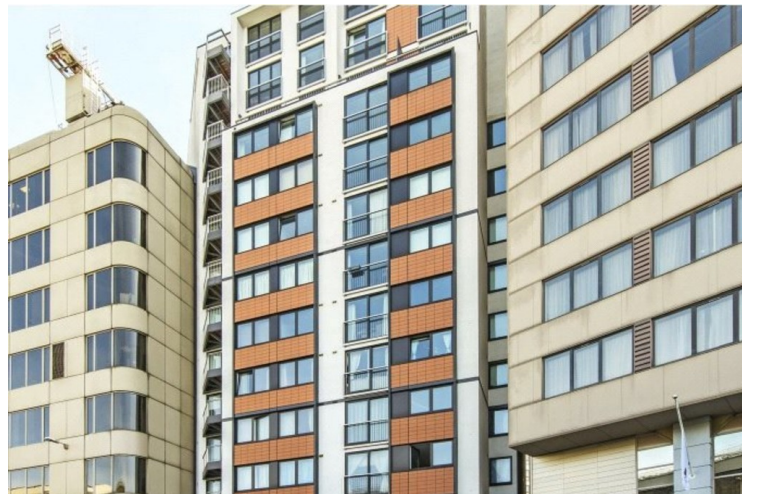
Modern and spacious one bedroom, one bathroom apartment located right next to Victoria Station. This property enjoys a central location, right next to the amenities of Victoria Street and Belgravia.

## KEY FEATURES

- Central location
- Lift access
- Right next to Victoria Station
- Concierge
- Open Plan Kitchen
- Spacious apartment











## Energy Efficiency Rating

	Current	Potential
<i>Very energy efficient - lower running costs</i>		
(92 plus) <b>A</b>		
(81 - 91) <b>B</b>	<b>86</b>	<b>88</b>
(69 - 80) <b>C</b>		
(55 - 68) <b>D</b>		
(39 - 54) <b>E</b>		
(21 - 38) <b>F</b>		
(1 - 20) <b>G</b>		
<i>Not energy efficient - higher running costs</i>		

### ADDITIONAL INFORMATION

**Local Authority:** Westminster City Council

## Hanson House, Bridge Place, London, SW1V

APPROX. GROSS INTERNAL FLOOR AREA 577 SQ FT 53.6 SQ METRES

