



Hempel Gardens

34 Craven Hill Gardens, , London, W2 3EA

%priceQualifier% %price%

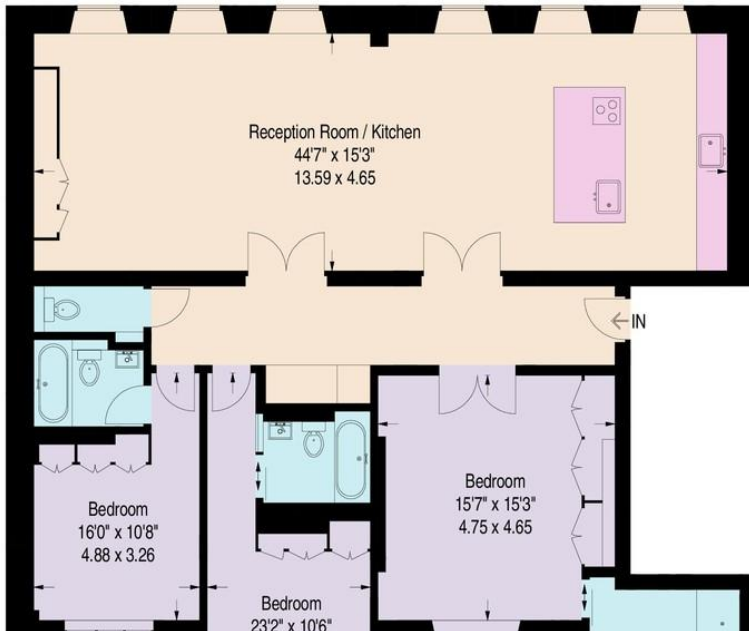
Property Summary

A fantastic, newly developed 3 bedroom lateral apartment to rent in Hempel Gardens, Hyde Park W2. Set in a beautiful white Stucco building the property benefits from porter, lift and access to an exclusive private garden square for the use of residents only.



Hempel Gardens, Craven Hill Gardens, W2

Approximate Gross Internal Area
1658 sq ft / 154 sq m



Energy Efficiency Rating

	Current	Potential
Very energy efficient - lower running costs		
(92 plus) A		
(81-91) B	83	83
(69-80) C		
(55-68) D		
(39-54) E		
(21-38) F		
(1-20) G		

- 3 Bedroom
- Luxurious En suite Bathroom with Bath
- Concierge
- Beautiful White Stucco Building
- Within Walking distance of Hyde Park and Kensington Gardens
- Master Bedroom
- Double Reception Room
- Lift
- Private Garden Square

70 Pembroke Road
Kensington
London
W8 6NX

www.sherwoodsproperty.co.uk
info@sherwoodsproperty.co.uk
020 3962 9980

Agents Note: Whilst every care has been taken to prepare these particulars, they are for guidance purposes only. All measurements are approximate are for general guidance purposes only and whilst every care has been taken to ensure their accuracy, they should not be relied upon and potential buyers/tenants are advised to recheck the measurements