

Sherwoods



- Gated Development
- Second Floor
- Underground Parking Space
- Close to Woking mainline station
-

31, Abingdon Court, 9 Heathside Road, Surrey, Woking, GU22 7EU

Asking Price Of £345,000

A spacious 2 bed property in a secure gated complex within walking distance of Woking Mainline station and the town centre. This spacious property benefits from a parking space, en-suite to the master bedroom with 1 further bathroom. There is one reception room which is open plan to the kitchen separated by an archway. Property is glazed with electric heaters throughout.

Property Description







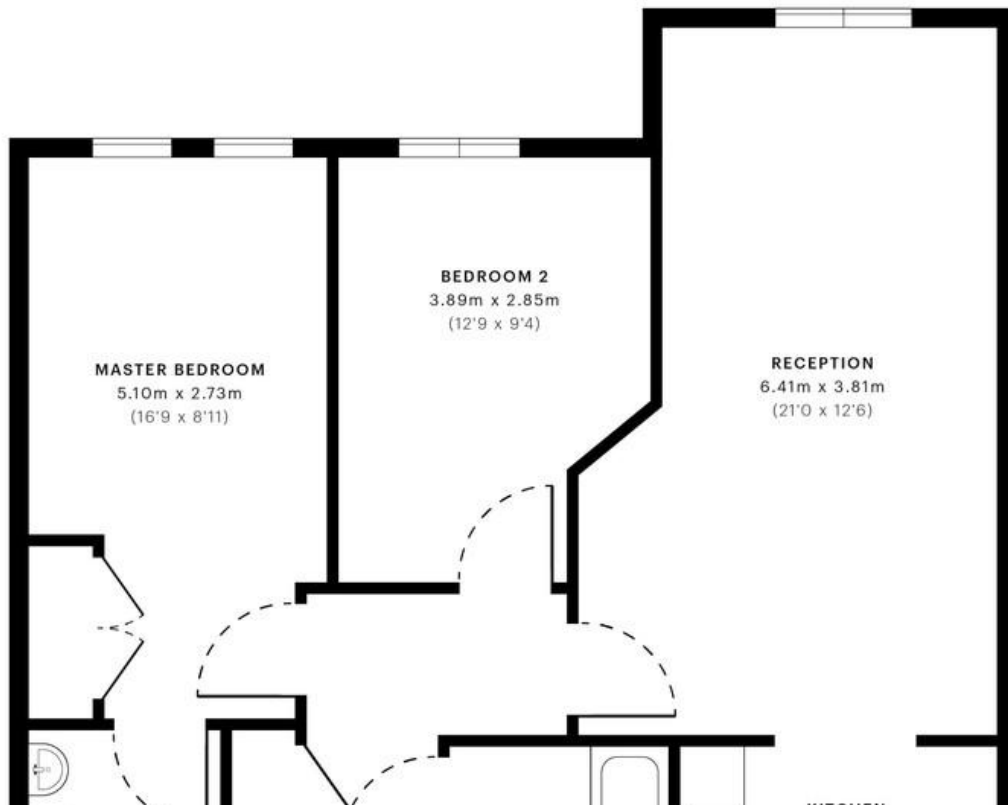
Abingdon Court, GU22

CAPTURE DATE
18/03/2020

LASER SCAN POINTS
28,720,797

GROSS INTERNAL AREA
66.5 Sqm / 716.2 Sqft

z ←



Energy rating and score

This property's current energy rating is B. It has the potential to be B.

[See how to improve this property's energy efficiency.](#)

Score	Energy rating	Current	Potential
92+	A		
81-91	B	81 B	85 B
69-80	C		

70 Pembroke Road, Kensington,
London, W8 6NX

www.sherwoodsproperty.co.uk
020 3962 9980
info@sherwoodsproperty.co.uk

Agents Note: Whilst every care has been taken to prepare these particulars, they are for guidance purposes only. All measurements are approximate and are for general guidance purposes only and whilst every care has been taken to ensure their accuracy, they should not be relied upon and potential buyers/tenants are advised to recheck the measurements

