



Marlborough Court, 26 Pembroke Road, London, W8 6DE

Asking Price Of: £1,275,000



Marlborough Court, 26 Pembroke Road, London, W8 6DE

24 hour concierge | Residents Gym | Gas, heating & hot water included | Art Deco Period Building |

DESCRIPTION

A bright, and lateral three bedroom family apartment located on the fifth floor (top floor) with lift, with far-reaching views situated within an impressive Art Deco Mansion block with concierge, gym, and beautiful communal garden. The property comprises a dual aspect double reception room with bay windows, a dual aspect master bedroom with ample built-in storage, a modern and bright family kitchen, two further bedrooms with built-in wardrobes, and two bathrooms.

Marlborough Court is situated on Pembroke Road south of Kensington High Street, well placed for the restaurants, shops, and transport links of both Kensington and Earls Court (Piccadilly, Circle & District lines) and open spaces of Holland Park.

KEY FEATURES

- 24 hour concierge
- Residents Gym
- Gas, heating & hot water included
- Art Deco Period Building
- Far Reaching Viewings
- Share of Freehold
- Beautiful communal gardens

A spacious, very bright, and lateral Three bedroom family apartment located on the fifth floor (with lift) with far-reaching views situated within an impressive Art Deco Mansion block with Porter, Gym, and Award-Winning Communal Gardens. The property comprises a dual aspect double reception room with bay windows, a dual aspect master bedroom

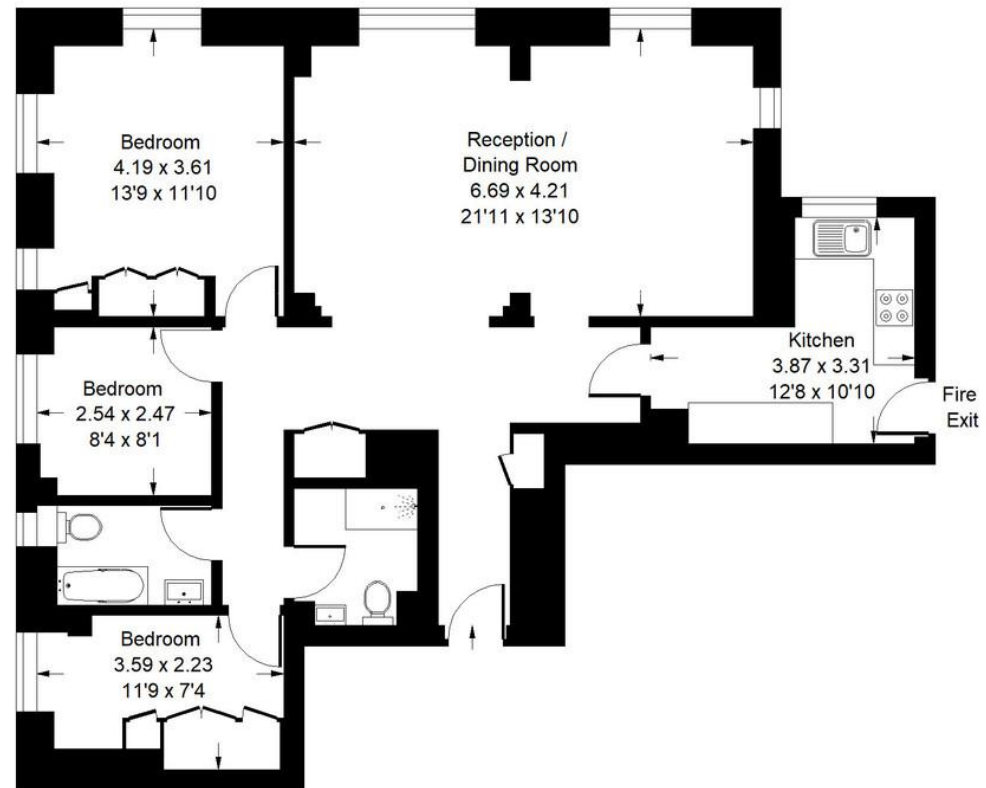
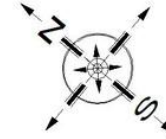






Marlborough Court, W8

Approx. Gross Internal Area
95.9 sq m / 1024 sq ft



ADDITIONAL INFORMATION

Tenure: Share of Freehold

Local Authority: Kensington and Chelsea Royal

Borough Council