



PARK VIEW

GEDLING

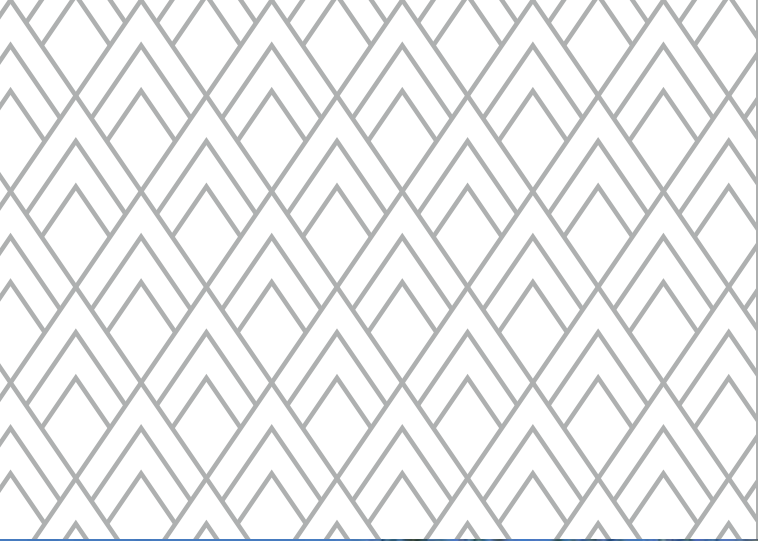
FIND YOUR
PERFECT
PLACE TO
CALL HOME

keepmoat.com





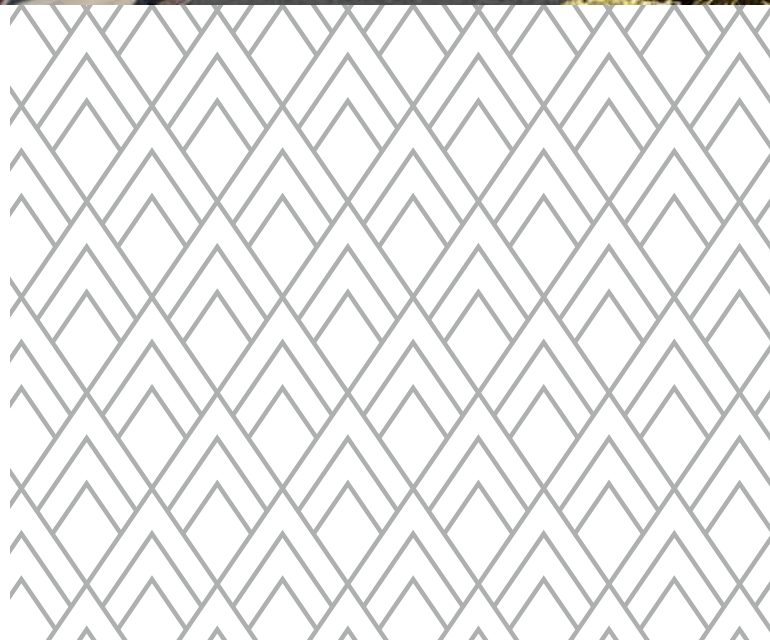
ARNOLD LANE, GEDLING, NOTTINGHAM NG4 4HF



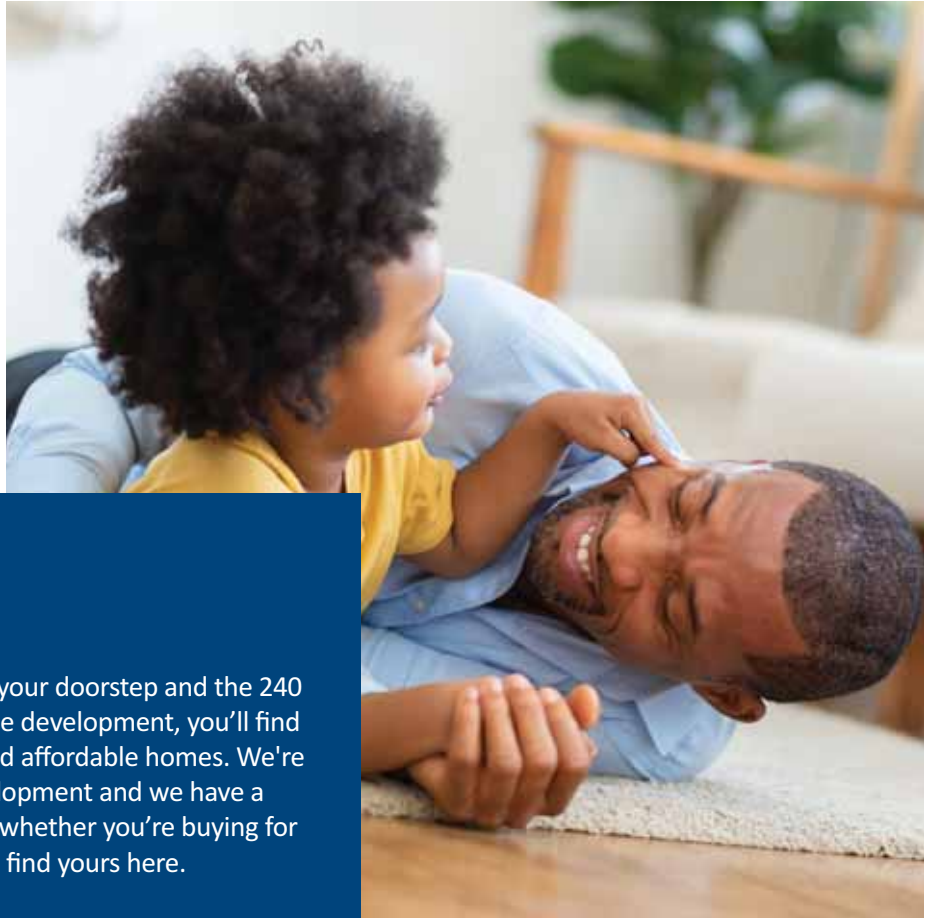
PARK VIEW

GEDLING

► WELCOME TO
PARK VIEW



- WELCOME
LOCATION
MAKE IT YOUR OWN
SPECIFICATION
YOUR BUYING GUIDE
30,000 HOMES & COUNTING



ENJOY LIFE TO THE FULL

In this great location, with so much on your doorstep and the 240 acre Gedling Country Park bordering the development, you'll find a stunning choice of modern, stylish and affordable homes. We're now passed the first phase of the development and we have a wide range of home styles available so whether you're buying for your first home or your next one, you'll find yours here.

With the bustling market town of Arnold just two miles away and Nottingham's vibrant city centre just 5 miles away, it's the ideal setting for those who want all the convenience of modern living, close to home. With the first phase of Park View complete, and exciting plans for a new school, local shops and urban square on the way, there's never been a better time to make Park View the perfect place to call home.

*Plus, with great offers like Help to Buy moving could be more affordable than you think.
Home to sell? Ask us about Easymove.*



Backed by
HM Government



Easymove



▶ LIFE IN GEDLING

The pretty residential setting of Gedling provides the perfect location for our Park View development. With so much so close to home, all your day-to-day needs are well catered for. A short walk from your door there's a Sainsbury's Local, or you could head into the centre of Gedling for a great selection of shops, a Co-op supermarket, restaurants and a pub.

However there's more to this location than great amenities. Bordering Gedling Country Park, you can enjoy the 240 acres of open spaces, fantastic wildlife and the many walking and cycling trails. There are also a number of other great parks in the area. Burton Road Jubilee Park is just down the road and has a children's play area and fun events throughout the year.

With so much close to home, it's easy to forget that Park View is just 5 miles from the centre of Nottingham. From shopping to dining, arts and culture to sport and leisure, there's always something to do in the city and it's so easy to get to.

Nottinghamshire is full of fantastic attractions and places to visit. Less than a ten minutes' drive away is Woodthorpe Grange Park; a 19th century Grade II listed manor house, 18-hole pitch and putt course and more. There's also Wollaton Hall, a 16th century Elizabethan mansion which has stunning gardens and parkland.



Nottingham Market Square ▲



Nottingham Castle ▲



Wollaton Hall ▲

WELCOME

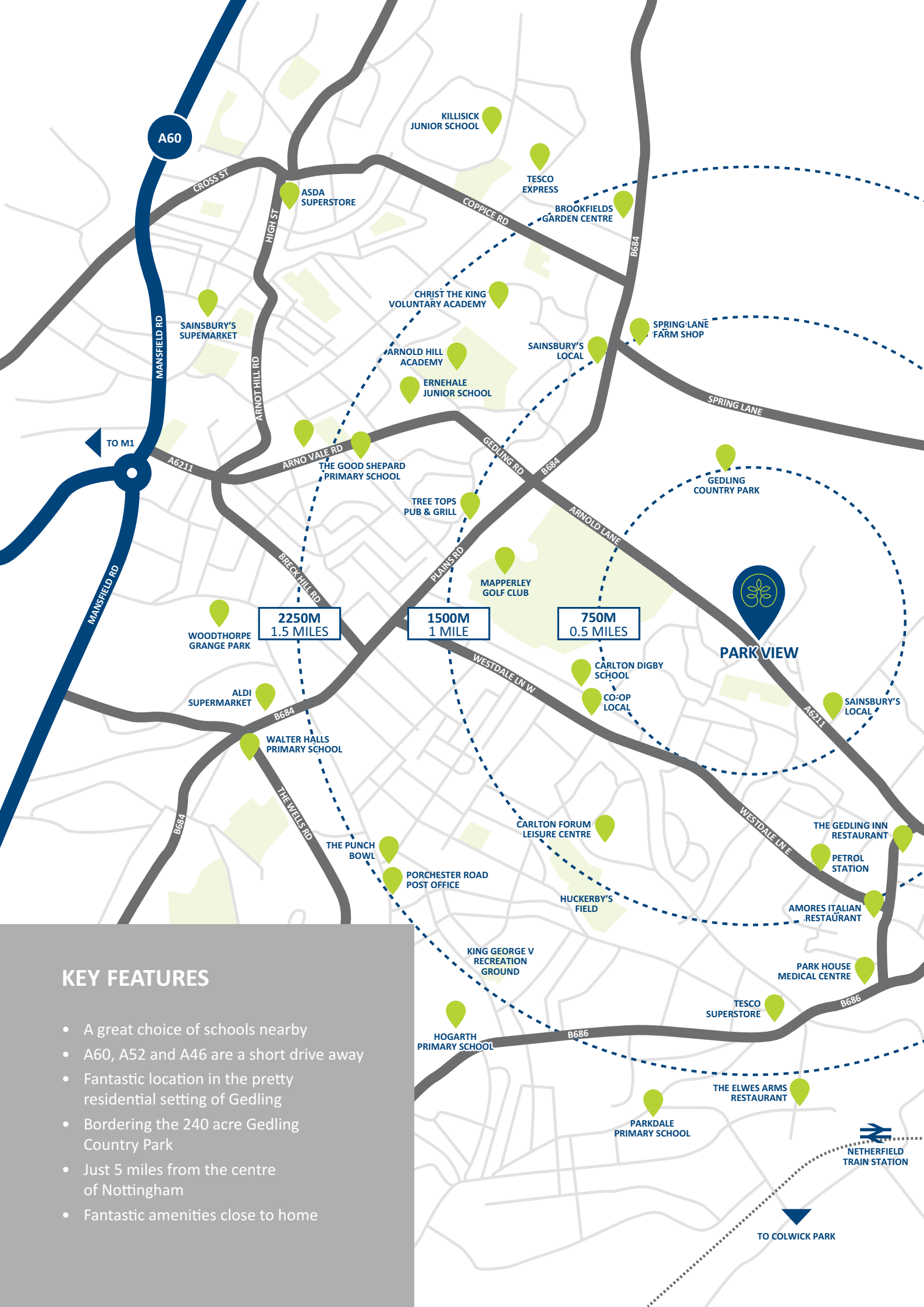
▶ LOCATION

MAKE IT YOUR OWN

SPECIFICATION

YOUR BUYING GUIDE

30,000 HOMES & COUNTING



KEY FEATURES

- A great choice of schools nearby
- A60, A52 and A46 are a short drive away
- Fantastic location in the pretty residential setting of Gedling
- Bordering the 240 acre Gedling Country Park
- Just 5 miles from the centre of Nottingham
- Fantastic amenities close to home



TO COLWICK PARK

▶ MAKE IT YOUR OWN



- WELCOME
- LOCATION
- ▶ **MAKE IT YOUR OWN**
- SPECIFICATION
- YOUR BUYING GUIDE
- 30,000 HOMES & COUNTING



WE NEVER FORGET IT'S YOUR HOME

Inside every Keepmoat home you'll find high standards of finish throughout, smart modern designs and living spaces that are designed with families in mind. Benefitting from a range of optional extras you can move into a new home that truly feels like your own.

When you buy a Keepmoat Home, you can rest assured that it's covered with not one, but two warranties. Our two year Keepmoat Homes Customer Care Warranty, as well as the NHBC 10 Year Building Warranty.

Practical and stylish homes that are perfectly suited to the demands of modern living.

Availability of upgrades and standard choices are subject to build stage at point of reservation.



► SPECIFICATION



FINISHING TOUCHES

Our standard specification includes high quality, modern fixtures and fittings with a great choice of kitchen worktops and units.

Once you've reserved your home, we'll invite you back for your options meeting. This is the exciting bit. It's here you can discuss all the ways you can personalise your home.

Be inspired and make your home yours.



WELCOME
LOCATION
MAKE IT YOUR OWN
► **SPECIFICATION**
YOUR BUYING GUIDE
30,000 HOMES & COUNTING

GENERAL

- ✓ Chrome ironmongery to internal doors
- ✓ Landscaped front garden
- ✓ Rotovated rear garden with slabbed patio**
- ✓ 1.8m fencing to rear garden** (please ask for specifics)
- ✓ UPVC double glazed windows
- ✓ UPVC double glazed French doors*
- ✓ High efficiency 2 zone programmable gas central heating system with thermostatic radiator valves

KITCHEN / UTILITY

- ✓ Choice of kitchen units with soft close hinges
- ✓ Choice of worktop with upstand*
- ✓ Stainless steel conventional oven, gas hob, stainless steel splashback and integrated extractor hood
- ✓ Stainless steel 1.5 bowl sink
- ✓ Boiler housing
- ✓ Plumbing for washing machine and dishwasher

DECORATING

- ✓ Matt emulsion painted walls and ceilings
Please ask for colour details
- ✓ White gloss paint to interior wood work

BATHROOM / EN-SUITE

- ✓ Fitted white sanitary ware
- ✓ Choice of wall tiles*
- ✓ *Non en-suite housetypes:* Thermostatic bar shower over bath and glass shower screen
- ✓ *En-suite housetypes:* Thermostatic bar shower to en-suite and shower mixer tap to bathroom
- ✓ Extractor fan to bathroom
- ✓ Moisture resistant light fitting

ELECTRICAL

- ✓ TV aerial socket to lounge and bedroom 1
- ✓ BT socket to lounge and bedroom 1
- ✓ USB charge point to kitchen
- ✓ White pendant light fittings (excluding bathrooms/en-suites)
- ✓ External light to front door
- ✓ White sockets and switches

SAFETY & SECURITY

- ✓ Security latches to windows except fire egress
- ✓ Mains fed smoke detectors to hall and landing

Make it your own with our range of optional extras



▶ YOUR BUYING GUIDE



STEP 01 Reservation

Once you've chosen the home for you, your sales executive will guide you through the reservation agreement. You'll need to pay a reservation fee - this could be as little as £250* and makes up part of your deposit. It also means, subject to contracts and meeting the timescales in the agreement, the home is yours at the price agreed.

Now's a good time, if you haven't already, to ask us about how the Government-backed Help to Buy scheme ** can make buying your dream home more affordable.



STEP 02 The Mortgage and Legal Advisor

If you need a mortgage and haven't already arranged one, you'll need to do so quickly. We can give you the details of some reputable independent financial advisers and solicitors if you need a little help. All mortgage lenders will want to value your new home for themselves before they lend you the money – even on our homes which offer fantastic value for money.

When moving house you need a solicitor to carry out the legal work of buying your home – this is called conveyancing. Your solicitor will handle all contracts, provide legal advice and carry out local council searches, work with the Land Registry and transfer the funds to pay for your property.



STEP 03 Exchange of Contracts

Four weeks after reservation (depending on the build stage of your new home) and if all the mortgage and legal documents are in place, we'll exchange contracts†.

At this point you'll need to pay the balance of the deposit and the whole transaction becomes legally binding. Please remember that if your deposit is in an account that you need to give notice of withdrawal, make sure you let the bank know well in advance to avoid having to pay any penalties.

WELCOME
LOCATION
MAKE IT YOUR OWN
SPECIFICATION

▶ YOUR BUYING GUIDE

30,000 HOMES & COUNTING

*Reservation fee is regional and development specific and may vary, please check with your Sale Executive.

**Help to buy is available on selected plots and subject to terms and conditions. † If the exchange does not take place on the agreed date we are within our rights to place the property back on the open market.



STEP 04

Build Completion

Once the build of your home is complete, you will be informed of a legal completion window of a month (4 weeks). During this time your home will also undergo thorough quality inspections, both internally and externally, to ensure that it meets our quality standards. It will also be subject to a final inspection by the National House-Building Council (NHBC). Once this is complete, we will then be able to serve a legal completion date to your solicitor whom in turn, will notify you. This will normally be within 7 days after the inspection.

Around this time, we'll invite you to a home demonstration to familiarise yourself with your new home. During the demonstration we'll show you everything from how to work your heating system and appliances to the location of your fuse box.

STEP 05

Legal Completion

You're nearly there. Legal completion is when your lender releases the funds to pay for your home. This is all done through your solicitor.

At this stage, we will provide your solicitor with the title deeds of your home.

STEP 06

Move in

Your dream Keepmoat home and a great new life awaits... once you've unpacked all the boxes.

Don't forget, we're always on hand to help you every step of the way even after you've moved in. Our regional customer care teams featuring highly trained staff can address any questions or issues that you may have with your new home.





30,000 HOMES AND COUNTING

There is no substitute for experience, and we have that in abundance. We've already created 30,000 dream homes and counting.

While the number may be impressive, we know that there's only one home that's important - and that's yours.

That's why we treat every home we build like it's our first - lavishing it with care and attention to detail from start to finish.

We never forget that it's your home.

WELCOME
LOCATION
MAKE IT YOUR OWN
SPECIFICATION
YOUR BUYING GUIDE

► **30,000 HOMES & COUNTING**





















A dark blue background with a white circle in the lower right quadrant. Inside the circle, the text "Start the next exciting chapter in your life" is written in a white, italicized serif font.

*Start the next
exciting chapter
in your life*



PARK VIEW

GEDLING

| | |
|--|---|
|  THE BUTTERCUP 2 bedroom home |  THE ALDER 4 bedroom home |
|  THE HAZEL 2 bedroom home |  THE LAVENDER 4 bedroom home |
|  THE BLACKTHORNE 3 bedroom home |  THE HONEYSUCKLE 4 bedroom home |
|  THE CORNFLOWER 3 bedroom home |  THE HEATHER 4 bedroom home |
|  THE LILY 3 bedroom home |  THE CAMELLIA 4 bedroom home |
|  THE CRIMSON 3 bedroom home |  THE MAGNOLIA 4 bedroom home |
|  THE MARIGOLD 3 bedroom home |  AFFORDABLE HOMES |
|  THE CARAWAY 3 bedroom home |  SHARED OWNERSHIP |
|  THE WINDSOR 3 bedroom home | |
|  THE LAUREL 3 bedroom home | |
|  THE FERN 3 bedroom home | |
|  THE CHILTERN 3 bedroom home | |





Previous Phase

Local Centre / Shops

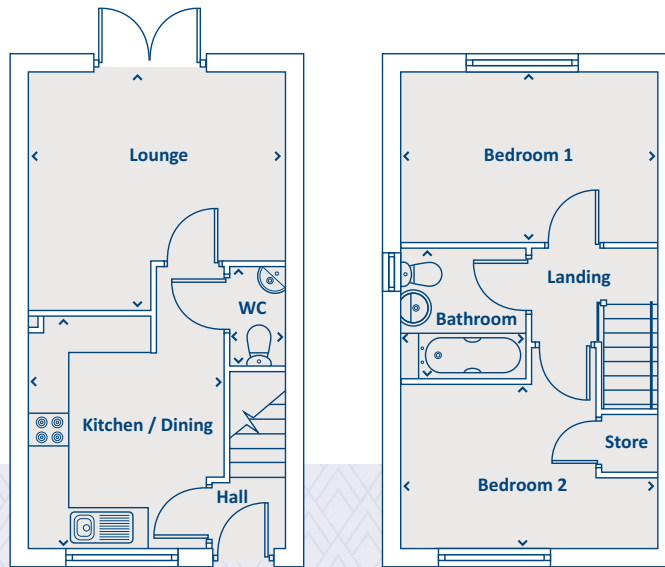
Please Note: This site plan is only a guide to the above development. It does not bind or imply that the layout will be as indicated. Please see our Home Sales Executive for full specification and plot details at this development.





Artists impression, features may vary

THE BUTTERCUP 2 bedroom home



GROUND FLOOR

| | | |
|------------------|-------------|----------------|
| Kitchen / Dining | 3625 x 3029 | 11'11" x 9'11" |
| Lounge | 3741 x 3992 | 12'3" x 13'1" |
| WC | 1558 x 847 | 5'1" x 2'9" |

FIRST FLOOR

| | | |
|-----------|-------------|--------------|
| Bedroom 1 | 2673 x 3984 | 8'9" x 13'1" |
| Bedroom 2 | 2560 x 3984 | 8'3" x 13'1" |
| Bathroom | 2015 x 1940 | 6'7" x 6'4" |

› Longest measurement taken

PLEASE NOTE:

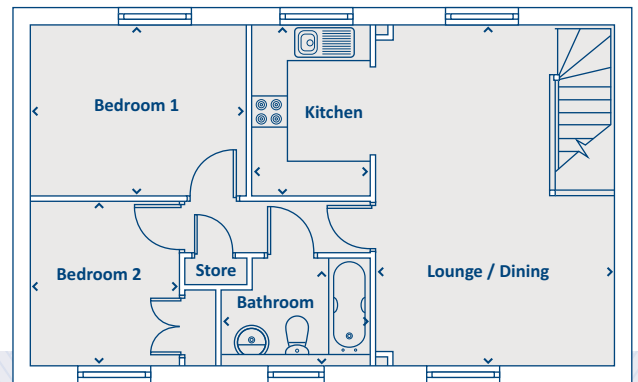
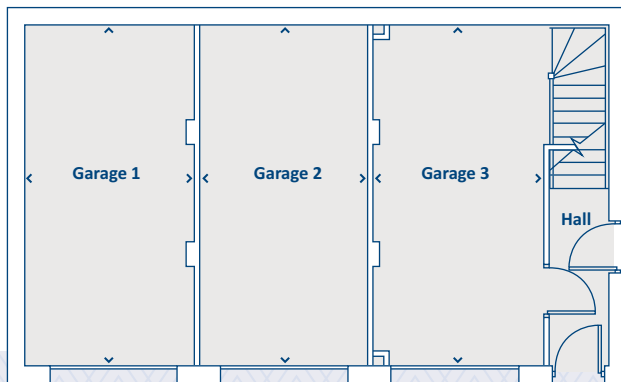
For illustration purposes only. All dimensions are + or - 50mm and these measurements should not be used for the purchase of carpets or furniture. Please see our Sales Executive for full specification and plot details at this development.

**CONSUMER
CODE
FOR
HOME BUILDERS**
www.consumercode.co.uk



Artists impression, features may vary

THE HAZEL 2 bedroom home



GROUND FLOOR

| | | |
|----------|-------------|--------------|
| Garage 1 | 6000 x 3000 | 19'7" x 9'8" |
| Garage 2 | 6000 x 3000 | 19'7" x 9'8" |
| Garage 3 | 6000 x 3000 | 19'7" x 9'8" |

FIRST FLOOR

| | | |
|-----------------|-------------|---------------|
| Kitchen | 3180 x 2100 | 10'4" x 6'9" |
| Living / Dining | 4130 x 5960 | 13'5" x 19'6" |
| Bedroom 1 | 3180 x 3800 | 10'4" x 12'5" |
| Bedroom 2 | 2696 x 2665 | 8'8" x 8'7" |
| Bathroom | 1700 x 2570 | 5'6" x 8'4" |

› Longest measurement taken

PLEASE NOTE:

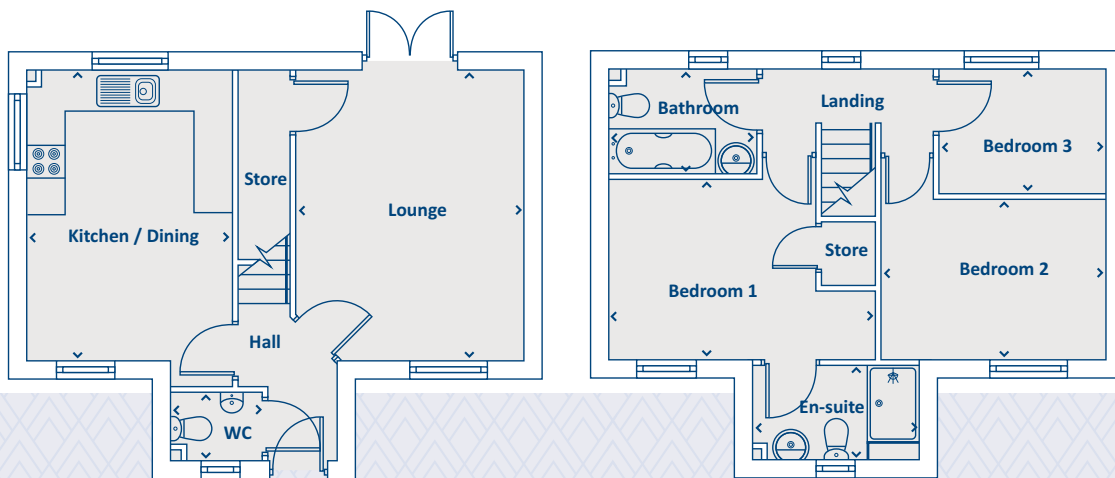
For illustration purposes only. All dimensions are + or - 50mm and these measurements should not be used for the purchase of carpets or furniture. Please see our Sales Executive for full specification and plot details at this development.

**CONSUMER
CODE FOR
HOME BUILDERS**
www.consumercode.co.uk



Artists impression, features may vary

THE BLACKTHORNE 3 bedroom home



GROUND FLOOR

| | | |
|------------------|-------------|---------------|
| Kitchen / Dining | 3202 x 4509 | 10'5" x 14'8" |
| Lounge | 3528 x 4509 | 11'6" x 14'8" |
| WC | 1054 x 1453 | 4'8" x 3'5" |

FIRST FLOOR

| | | |
|-----------|-------------|--------------|
| Bedroom 1 | 3202 x 2831 | 10'5" x 9'3" |
| En-suite | 2597 x 1482 | 8'5" x 4'9" |
| Bedroom 2 | 2500 x 3528 | 8'2" x 11'5" |
| Bedroom 3 | 2568 x 1916 | 8'4" x 6'3" |
| Bathroom | 2292 x 1585 | 7'5" x 5'2" |

› Longest measurement taken

PLEASE NOTE:

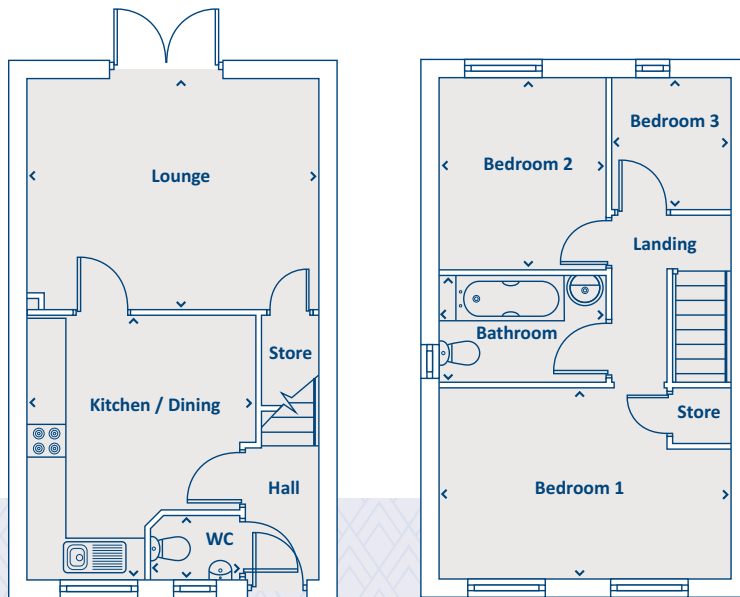
For illustration purposes only. All dimensions are + or - 50mm and these measurements should not be used for the purchase of carpets or furniture. Please see our Sales Executive for full specification and plot details at this development.

**CONSUMER
CODE FOR
HOME BUILDERS**
www.consumercode.co.uk



Artists impression, features may vary

THE CORNFLOWER 3 bedroom home



GROUND FLOOR

| | | |
|------------------|-------------|---------------|
| Kitchen / Dining | 4100 x 3551 | 13'5" x 11'8" |
| Lounge | 3579 x 4491 | 11'9" x 14'9" |
| WC | 972 x 1423 | 3'2" x 4'8" |

FIRST FLOOR

| | | |
|-----------|-------------|--------------|
| Bedroom 1 | 2942 x 4491 | 9'8" x 14'9" |
| Bedroom 2 | 2989 x 2571 | 9'10" x 8'5" |
| Bedroom 3 | 2049 x 1827 | 6'9" x 6'0" |
| Bathroom | 1655 x 2571 | 5'5" x 8'5" |

› Longest measurement taken

PLEASE NOTE:

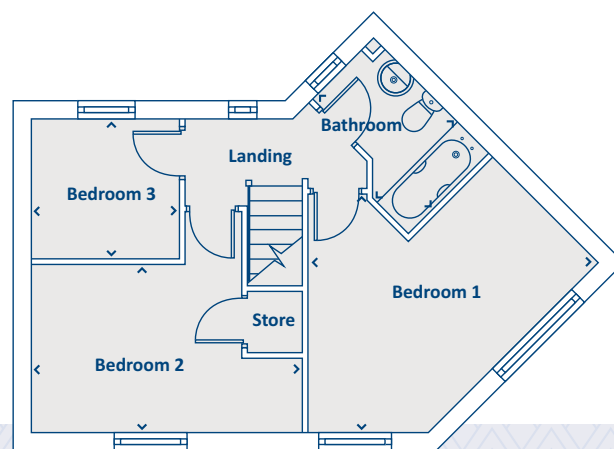
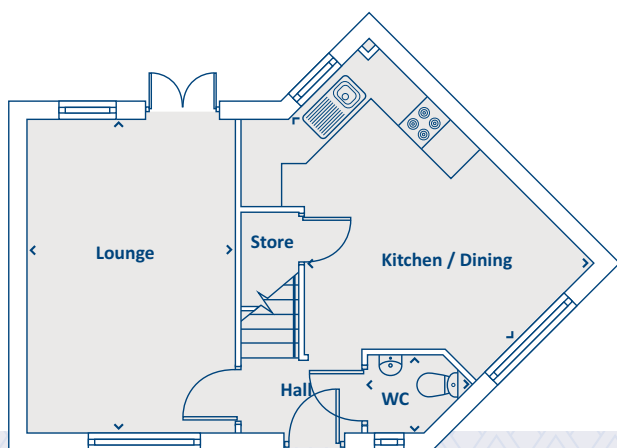
For illustration purposes only. All dimensions are + or - 50mm and these measurements should not be used for the purchase of carpets or furniture. Please see our Sales Executive for full specification and plot details at this development.

**CONSUMER
CODE FOR
HOME BUILDERS**
www.consumercode.co.uk



Artists impression, features may vary

THE LILY 3 bedroom home



GROUND FLOOR

| | | |
|------------------|-------------|---------------|
| Kitchen / Dining | 4959 x 4196 | 16'3" x 13'9" |
| Lounge | 4959 x 3210 | 16'3" x 10'6" |
| WC | 1095 x 1377 | 3'8" x 4'6" |

FIRST FLOOR

| | | |
|-----------|-------------|----------------|
| Bedroom 1 | 3708 x 4521 | 12'2" x 14'10" |
| Bedroom 2 | 3445 x 4215 | 11'4" x 13'10" |
| Bedroom 3 | 2137 x 2276 | 7'0" x 7'6" |
| Bathroom | 2530 x 1695 | 8'3" x 5'6" |

› Longest measurement taken

PLEASE NOTE:

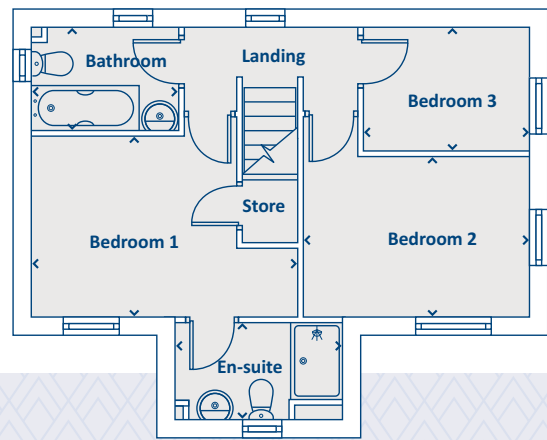
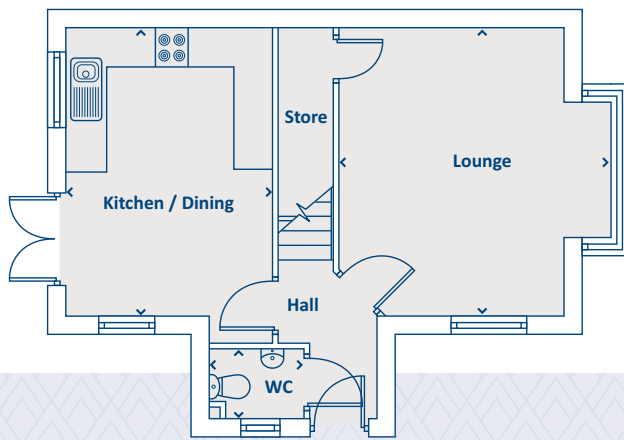
For illustration purposes only. All dimensions are + or - 50mm and these measurements should not be used for the purchase of carpets or furniture. Please see our Sales Executive for full specification and plot details at this development.

**CONSUMER
CODE
FOR
HOME BUILDERS**
www.consumercode.co.uk



Artists impression, features may vary

THE CRIMSON 3 bedroom home



GROUND FLOOR

| | | |
|------------------|-------------|----------------|
| Kitchen / Dining | 3202 x 4937 | 10'6" x 16'2" |
| Lounge | 3528 x 4252 | 11'7" x 13'11" |
| WC | 1453 x 1054 | 4'9" x 3'5" |

FIRST FLOOR

| | | |
|-----------|-------------|---------------|
| Bedroom 1 | 4150 x 3126 | 13'7" x 10'3" |
| En-suite | 2597 x 1482 | 8'6" x 4'10" |
| Bedroom 2 | 2500 x 3528 | 8'2" x 11'5" |
| Bedroom 3 | 2568 x 1916 | 8'5" x 6'3" |
| Bathroom | 2292 x 1585 | 7'6" x 5'2" |

› Longest measurement taken

PLEASE NOTE:

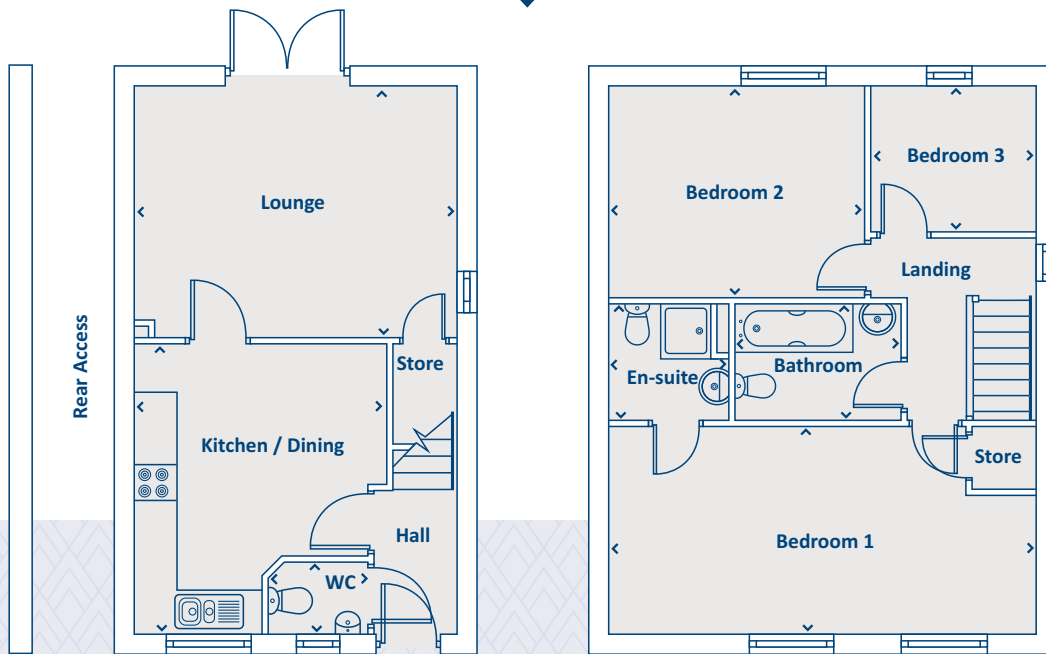
For illustration purposes only. All dimensions are + or - 50mm and these measurements should not be used for the purchase of carpets or furniture. Please see our Sales Executive for full specification and plot details at this development.

**CONSUMER
CODE
FOR
HOME BUILDERS**
www.consumercode.co.uk



Artists impression, features may vary

THE MARIGOLD 3 bedroom home



GROUND FLOOR

| | | |
|------------------|-------------|---------------|
| Kitchen / Dining | 3591 x 4100 | 11'9" x 13'5" |
| Lounge | 4499 x 3579 | 14'9" x 11'9" |
| WC | 1423 x 1010 | 4'8" x 3'4" |

FIRST FLOOR

| | | |
|-----------|-------------|---------------|
| Bedroom 1 | 6008 x 2942 | 19'9" x 9'8" |
| En-suite | 1638 x 1665 | 5'4" x 5'5" |
| Bedroom 2 | 3577 x 2989 | 11'9" x 9'10" |
| Bedroom 3 | 2338 x 2049 | 7'8" x 6'9" |
| Bathroom | 2346 x 1655 | 7'8" x 5'5" |

› Longest measurement taken

PLEASE NOTE:

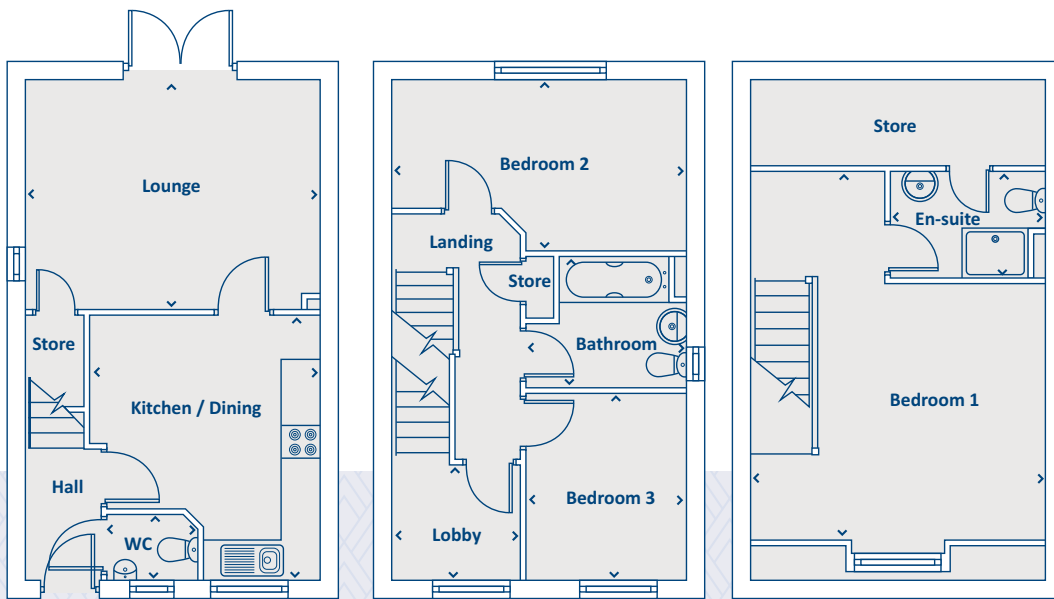
For illustration purposes only. All dimensions are + or - 50mm and these measurements should not be used for the purchase of carpets or furniture. Please see our Sales Executive for full specification and plot details at this development.

**CONSUMER
CODE FOR
HOME BUILDERS**
www.consumercode.co.uk



Artists impression, features may vary

THE CARAWAY 3 bedroom home



GROUND FLOOR

| | | |
|------------------|-------------|---------------|
| Kitchen / Dining | 4100 x 3551 | 13'5" x 11'8" |
| Lounge | 3579 x 4491 | 11'9" x 14'9" |
| WC | 1010 x 1423 | 3'4" x 4'8" |

FIRST FLOOR

| | | |
|-----------|-------------|--------------|
| Bedroom 2 | 2669 x 4491 | 8'9" x 14'9" |
| Bedroom 3 | 2883 x 2465 | 9'6" x 8'1" |
| Bathroom | 2034 x 2465 | 6'8" x 8'1" |
| Lobby | 1777 x 1933 | 5'10" x 6'4" |

SECOND FLOOR

| | | |
|-----------|-------------|---------------|
| Bedroom 1 | 5966 x 4491 | 19'7" x 14'9" |
| En-Suite | 1660 x 2369 | 5'5" x 7'9" |

› Longest measurement taken

PLEASE NOTE:

For illustration purposes only. All dimensions are + or - 50mm and these measurements should not be used for the purchase of carpets or furniture. Please see our Sales Executive for full specification and plot details at this development.

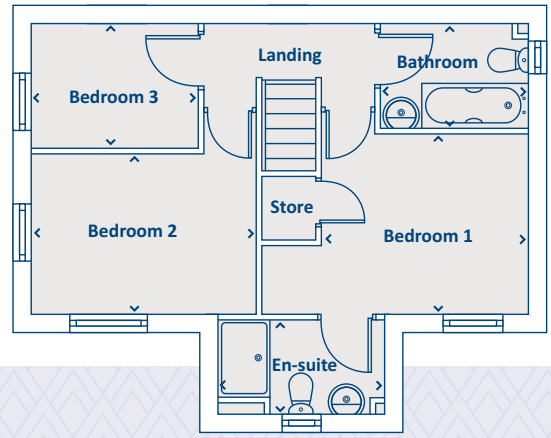
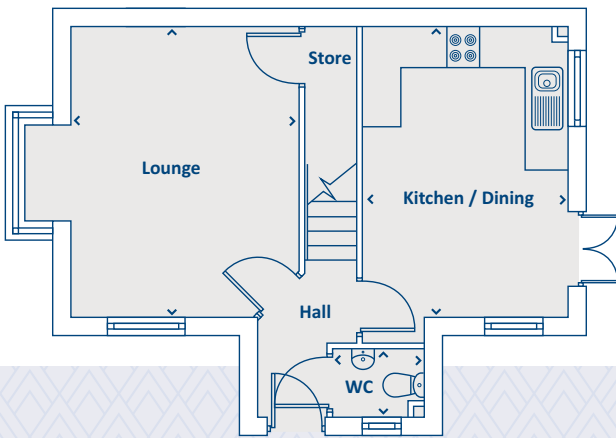
**CONSUMER
CODE
FOR
HOME BUILDERS**

www.consumercode.co.uk



Artists impression, features may vary

THE WINDSOR 3 bedroom home



GROUND FLOOR

| | | |
|------------------|-------------|----------------|
| Kitchen / Dining | 3202 x 4510 | 10'6" x 14'10" |
| Lounge | 3530 x 4510 | 11'7" x 14'10" |
| WC | 1454 x 1054 | 4'9" x 3'5" |

FIRST FLOOR

| | | |
|-----------|-------------|--------------|
| Bedroom 1 | 3202 x 2831 | 10'6" x 9'3" |
| En-suite | 2598 x 1482 | 8'6" x 4'10" |
| Bedroom 2 | 3530 x 2500 | 11'7" x 8'2" |
| Bedroom 3 | 2568 x 1917 | 8'5" x 6'3" |
| Bathroom | 2292 x 1586 | 7'6" x 5'2" |

› Longest measurement taken

PLEASE NOTE:

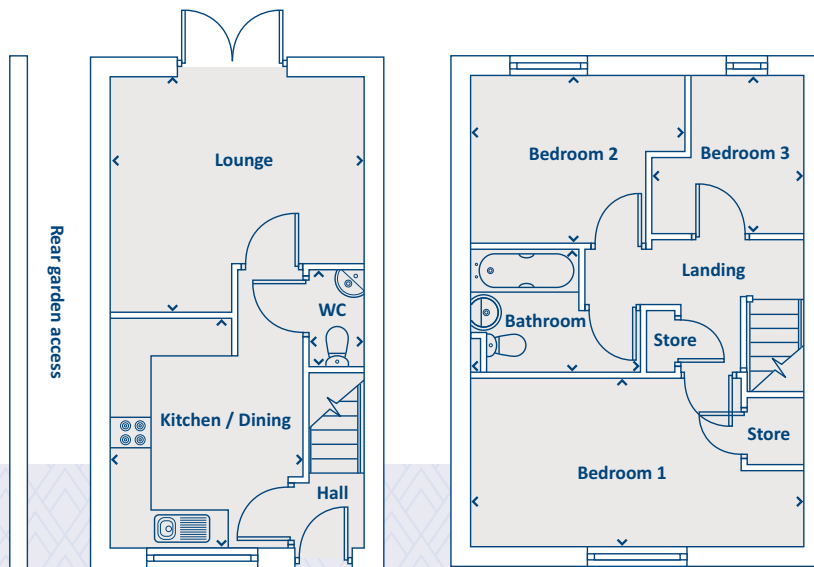
For illustration purposes only. All dimensions are + or - 50mm and these measurements should not be used for the purchase of carpets or furniture. Please see our Sales Executive for full specification and plot details at this development.

CONSUMER CODE FOR HOME BUILDERS
www.consumercode.co.uk



Artists impression, features may vary

THE LAUREL 3 bedroom home



GROUND FLOOR

| | | |
|------------------|-------------|---------------|
| Kitchen / Dining | 3685 x 3044 | 12'1" x 10'0" |
| Lounge | 3656 x 3984 | 12'0" x 13'1" |
| WC | 1558 x 847 | 5'1" x 2'9" |

FIRST FLOOR

| | | |
|-----------|-------------|---------------|
| Bedroom 1 | 3507 x 5232 | 11'6" x 17'2" |
| Bedroom 2 | 2639 x 3293 | 8'8" x 10'10" |
| Bedroom 3 | 2460 x 1847 | 8'1" x 6'1" |
| Bathroom | 1970 x 2244 | 6'6" x 7'4" |

› Longest measurement taken

PLEASE NOTE:

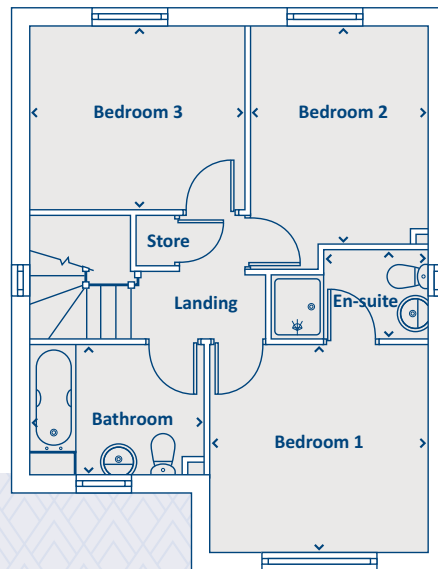
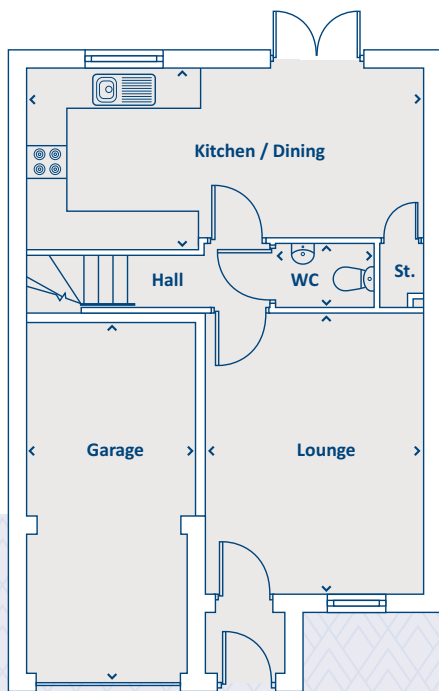
For illustration purposes only. All dimensions are + or - 50mm and these measurements should not be used for the purchase of carpets or furniture. Please see our Sales Executive for full specification and plot details at this development.

**CONSUMER
CODE FOR
HOME BUILDERS**
www.consumercode.co.uk



Artists impression, features may vary

THE FERN 3 bedroom home



GROUND FLOOR

| | | |
|------------------|-------------|---------------|
| Kitchen / Dining | 2835 x 6196 | 9'4" x 20'4" |
| Lounge | 4343 x 3374 | 14'3" x 11'1" |
| WC | 1027 x 1520 | 3'4" x 5'0" |
| Garage | 2622 x 5777 | 8'7" x 18'1" |

FIRST FLOOR

| | | |
|-----------|-------------|---------------|
| Bedroom 1 | 3228 x 3384 | 10'7" x 11'1" |
| En-suite | 1375 x 2427 | 4'6" x 8'0" |
| Bedroom 2 | 3807 x 2775 | 12'6" x 9'1" |
| Bedroom 3 | 2847 x 3329 | 9'4" x 10'11" |
| Bathroom | 1991 x 2719 | 6'6" x 8'11" |

› Longest measurement taken

PLEASE NOTE:

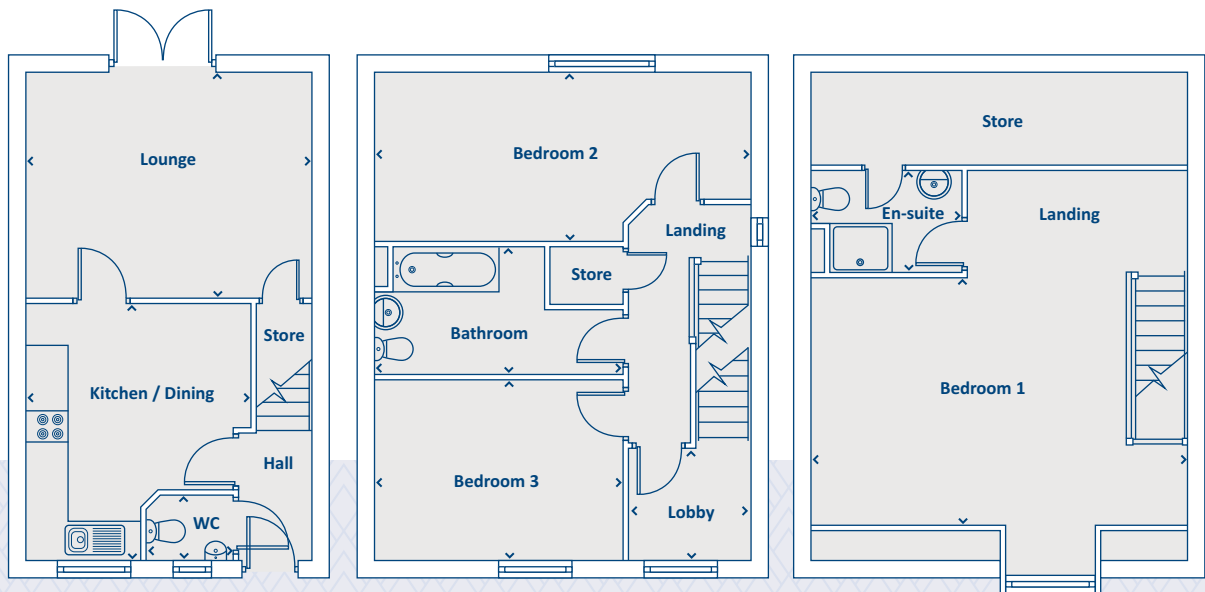
For illustration purposes only. All dimensions are + or - 50mm and these measurements should not be used for the purchase of carpets or furniture. Please see our Sales Executive for full specification and plot details at this development.

**CONSUMER
CODE FOR
HOME BUILDERS**
www.consumercode.co.uk



Artists impression, features may vary

THE CHILTERN 3 bedroom home



GROUND FLOOR

| | | |
|------------------|-------------|---------------|
| Kitchen / Dining | 4100 x 3551 | 13'5" x 11'8" |
| Lounge | 3579 x 4499 | 11'9" x 14'9" |
| WC | 1010 x 1423 | 3'4" x 4'8" |

FIRST FLOOR

| | | |
|-----------|-------------|--------------|
| Bedroom 2 | 2669 x 5997 | 8'9" x 19'8" |
| Bedroom 3 | 2883 x 3963 | 9'6" x 13'0" |
| Lobby | 1777 x 1941 | 5'10" x 6'4" |
| Bathroom | 2034 x 3963 | 6'8" x 13'0" |

SECOND FLOOR

| | | |
|-----------|-------------|---------------|
| Bedroom 1 | 6307 x 5997 | 20'8" x 19'8" |
| En-suite | 1660 x 2361 | 5'5" x 7'9" |

› Longest measurement taken

PLEASE NOTE:

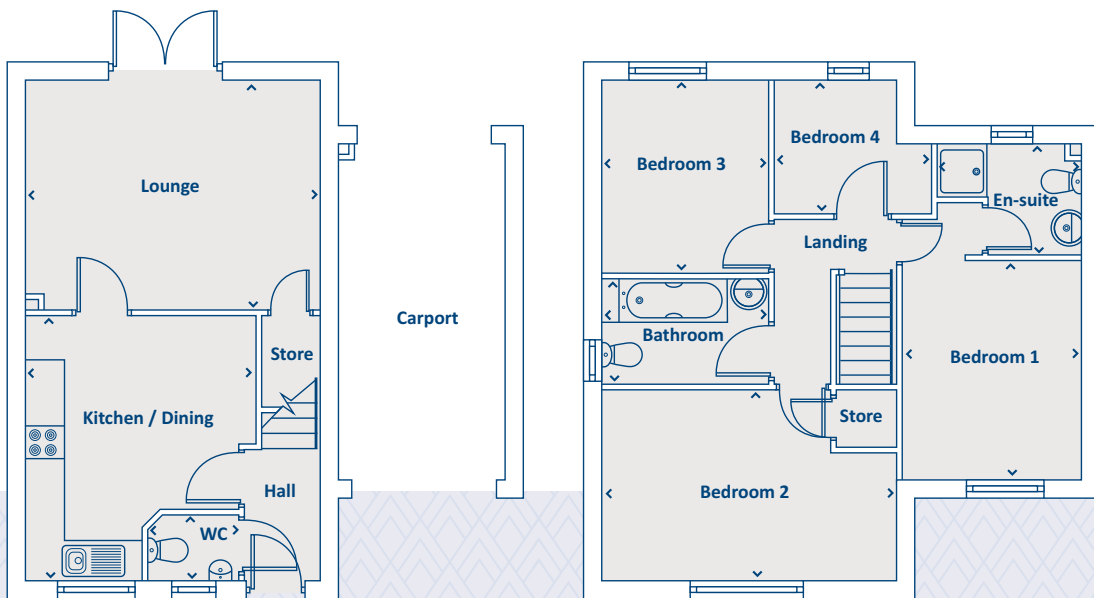
For illustration purposes only. All dimensions are + or - 50mm and these measurements should not be used for the purchase of carpets or furniture. Please see our Sales Executive for full specification and plot details at this development.

**CONSUMER
CODE
FOR
HOME BUILDERS**
www.consumercode.co.uk



Artists impression, features may vary

THE ALDER 4 bedroom home



GROUND FLOOR

| | | |
|------------------|-------------|----------------|
| Kitchen / Dining | 4100 x 3561 | 13'5" x 11'8" |
| Lounge | 3579 x 4509 | 11'9" x 14'10" |
| WC | 1010 x 1423 | 3'4" x 4'8" |

› Longest measurement taken

FIRST FLOOR

| | | |
|-----------|-------------|---------------|
| Bedroom 1 | 3381 x 3200 | 11'1" x 10'6" |
| En-suite | 1710 x 2610 | 5'7" x 8'7" |
| Bedroom 2 | 2942 x 4509 | 9'8" x 14'10" |
| Bedroom 3 | 2989 x 2571 | 9'10" x 8'5" |
| Bedroom 4 | 2049 x 2445 | 6'9" x 8'0" |
| Bathroom | 1655 x 2571 | 5'5" x 8'5" |

PLEASE NOTE:

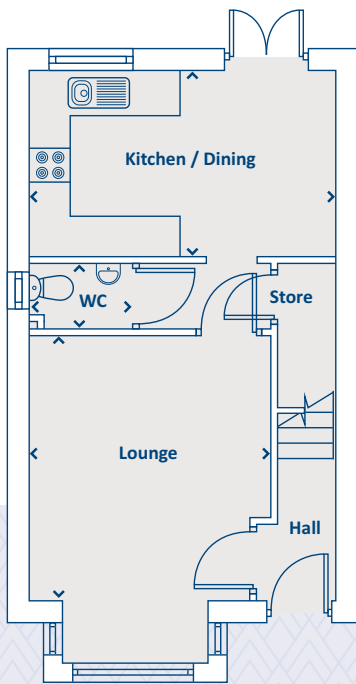
For illustration purposes only. All dimensions are + or - 50mm and these measurements should not be used for the purchase of carpets or furniture. Please see our Sales Executive for full specification and plot details at this development.

**CONSUMER
CODE FOR
HOME BUILDERS**
www.consumercode.co.uk



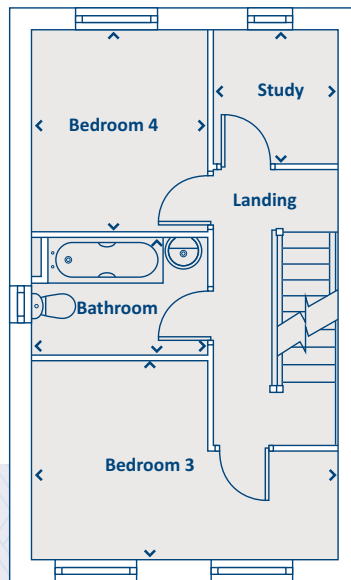
Artists impression, features may vary

THE LAVENDER 4 bedroom home



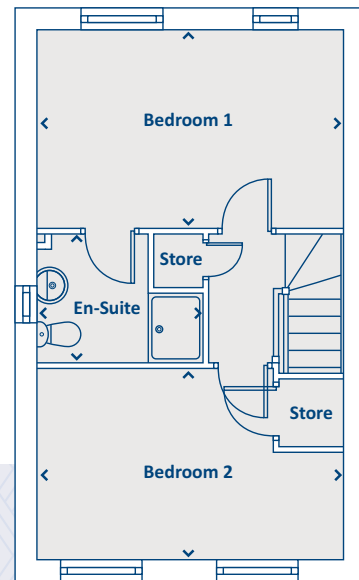
GROUND FLOOR

| | | |
|------------------|-------------|---------------|
| Kitchen / Dining | 2735 x 4491 | 9'0" x 14'9" |
| Lounge | 3891 x 3551 | 12'7" x 11'8" |
| WC | 960 x 1510 | 3'2" x 4'11" |



FIRST FLOOR

| | | |
|-----------|-------------|--------------|
| Bedroom 3 | 2910 x 4492 | 9'7" x 14'9" |
| Bedroom 4 | 2952 x 2587 | 9'8" x 8'6" |
| Bathroom | 1725 x 2587 | 5'8" x 8'6" |
| Study | 1977 x 1811 | 6'6" x 5'11" |



SECOND FLOOR

| | | |
|-----------|-------------|--------------|
| Bedroom 1 | 2910 x 4491 | 9'7" x 14'9" |
| En-suite | 1874 x 2433 | 6'2" x 8'0" |
| Bedroom 2 | 2802 x 4491 | 9'2" x 14'9" |

› Longest measurement taken

PLEASE NOTE:

For illustration purposes only. All dimensions are + or - 50mm and these measurements should not be used for the purchase of carpets or furniture. Please see our Sales Executive for full specification and plot details at this development.

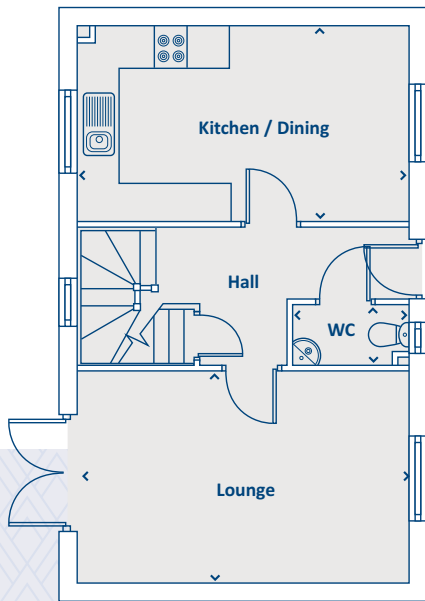
**CONSUMER
CODE FOR
HOME BUILDERS**

www.consumercode.co.uk



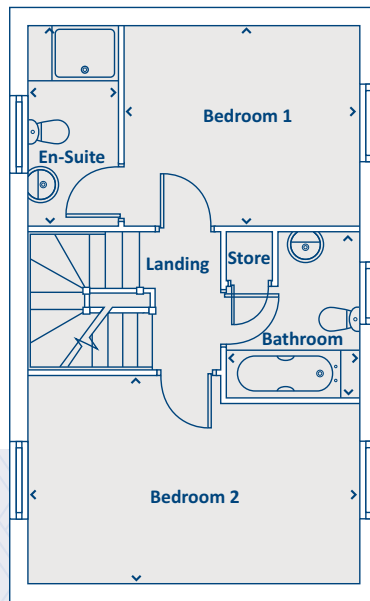
Artists impression, features may vary

THE HONEYSUCKLE 4 bedroom home



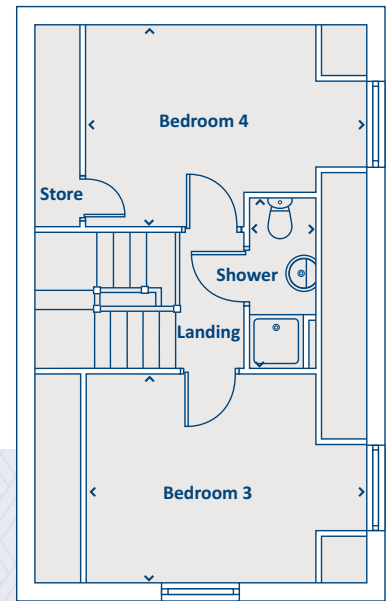
GROUND FLOOR

| | | |
|------------------|-------------|---------------|
| Kitchen / Dining | 2908 x 4847 | 9'5" x 15'9" |
| Lounge | 3048 x 4847 | 10'0" x 15'9" |
| WC | 900 x 1660 | 3'0" x 5'4" |



FIRST FLOOR

| | | |
|-----------|-------------|--------------|
| Bedroom 1 | 2960 x 3439 | 9'7" x 11'2" |
| En-suite | 2960 x 1315 | 9'7" x 4'3" |
| Bedroom 2 | 2654 x 4847 | 8'7" x 15'9" |
| Bathroom | 2422 x 1940 | 7'9" x 6'4" |



SECOND FLOOR

| | | |
|-----------|-------------|---------------|
| Bedroom 3 | 4126 x 2975 | 13'5" x 9'8" |
| Bedroom 4 | 4126 x 3047 | 13'5" x 10'0" |
| Shower | 2528 x 997 | 8'4" x 3'3" |

› Longest measurement taken

PLEASE NOTE:

For illustration purposes only. All dimensions are + or - 50mm and these measurements should not be used for the purchase of carpets or furniture. Please see our Sales Executive for full specification and plot details at this development.

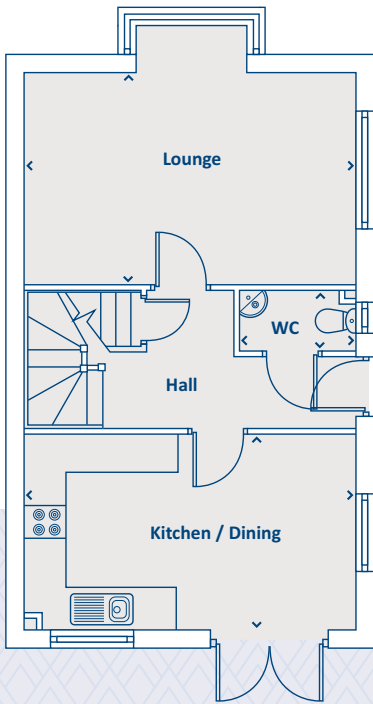
**CONSUMER
CODE
FOR
HOME BUILDERS**

www.consumercode.co.uk



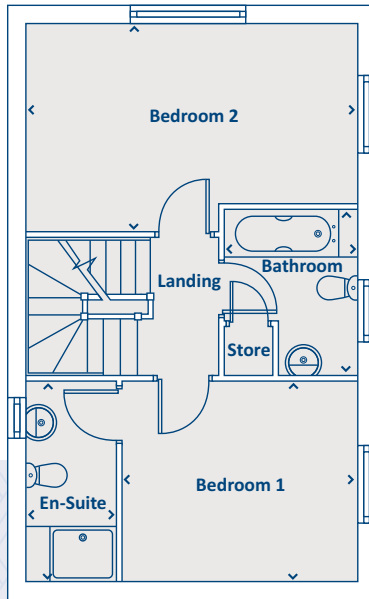
Artists impression, features may vary

THE HEATHER 4 bedroom home



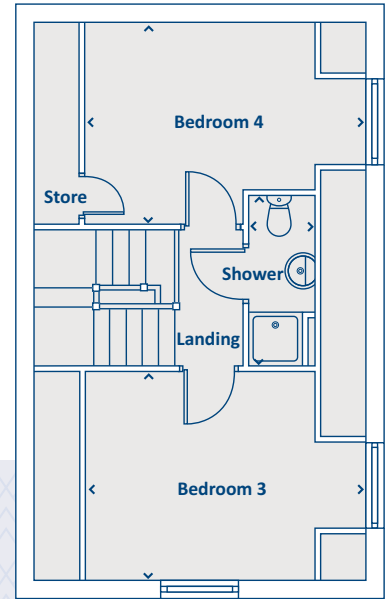
GROUND FLOOR

| | | |
|------------------|-------------|----------------|
| Kitchen / Dining | 2921 x 4847 | 9'7" x 15'11" |
| Lounge | 3048 x 4847 | 10'0" x 15'11" |
| WC | 900 x 1660 | 2'11" x 5'5" |



FIRST FLOOR

| | | |
|-----------|-------------|----------------|
| Bedroom 1 | 2960 x 3439 | 9'9" x 11'3" |
| En-suite | 2960 x 1315 | 9'9" x 4'4" |
| Bedroom 2 | 3048 x 4847 | 10'0" x 15'11" |
| Bathroom | 2422 x 1941 | 7'11" x 6'4" |



SECOND FLOOR

| | | |
|-----------|-------------|---------------|
| Bedroom 3 | 3048 x 4151 | 10'0" x 13'6" |
| Bedroom 4 | 2960 x 4151 | 9'7" x 13'6" |
| Shower | 2528 x 997 | 8'3" x 3'2" |

› Longest measurement taken

PLEASE NOTE:

For illustration purposes only. All dimensions are + or - 50mm and these measurements should not be used for the purchase of carpets or furniture. Please see our Sales Executive for full specification and plot details at this development.

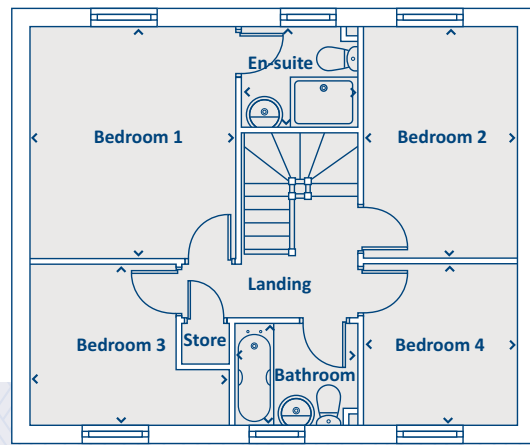
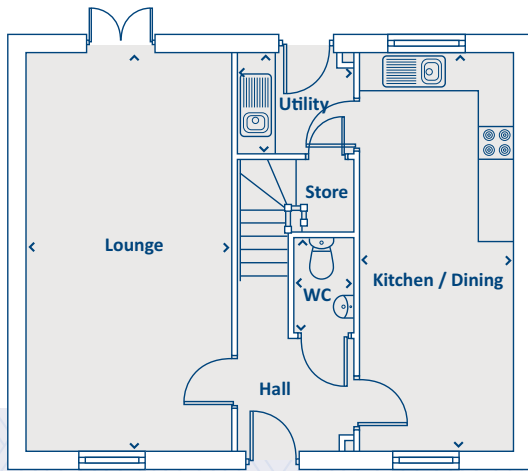
**CONSUMER
CODE FOR
HOME BUILDERS**

www.consumercode.co.uk



Artists impression, features may vary

THE CAMELLIA 4 bedroom home



GROUND FLOOR

| | | |
|------------------|-------------|---------------|
| Kitchen / Dining | 2600 x 6810 | 8'5" x 22'3" |
| Utility | 1945 x 1735 | 6'4" x 5'7" |
| Lounge | 3515 x 6810 | 11'5" x 22'3" |
| WC | 1012 x 1621 | 3'3" x 5'3" |

› Longest measurement taken

FIRST FLOOR

| | | |
|-----------|-------------|----------------|
| Bedroom 1 | 3572 x 3980 | 11'7" x 13'10" |
| En-suite | 1960 x 1735 | 6'4" x 5'7" |
| Bedroom 2 | 2657 x 3980 | 8'7" x 13'10" |
| Bedroom 3 | 3449 x 2737 | 11'3" x 9'0" |
| Bedroom 4 | 2657 x 2737 | 8'7" x 9'0" |
| Bathroom | 2083 x 1710 | 6'9" x 5'6" |

PLEASE NOTE:

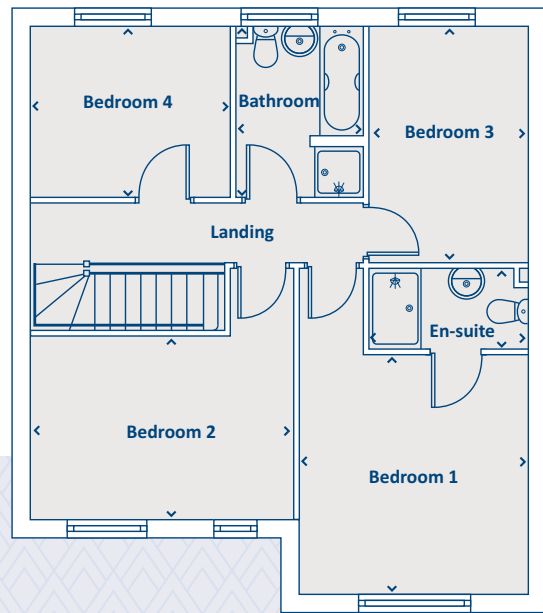
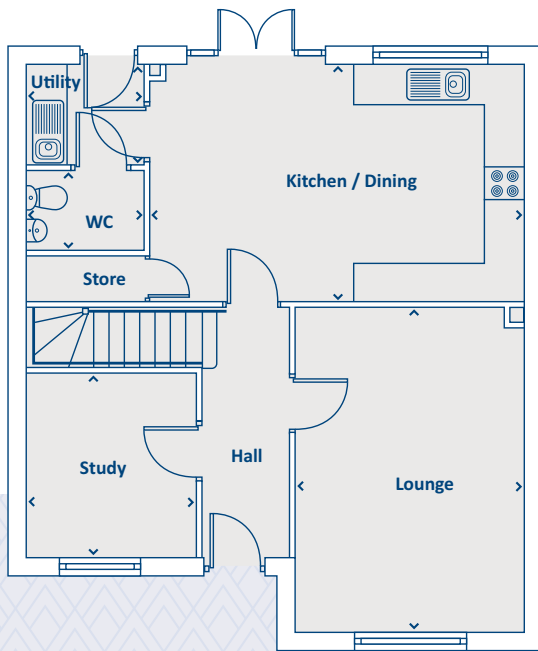
For illustration purposes only. All dimensions are + or - 50mm and these measurements should not be used for the purchase of carpets or furniture. Please see our Sales Executive for full specification and plot details at this development.

**CONSUMER
CODE FOR
HOME BUILDERS**
www.consumercode.co.uk



Artists impression, features may vary

THE MAGNOLIA 4 bedroom home



GROUND FLOOR

| | | |
|------------------|-------------|----------------|
| Kitchen / Dining | 3702 x 5839 | 12'10" x 19'2" |
| Utility | 1561 x 1796 | 5'1" x 5'9" |
| Lounge | 4998 x 3497 | 16'4" x 11'5" |
| WC | 1271 x 1811 | 4'2" x 5'9" |
| Study | 2875 x 2626 | 9'4" x 8'6" |

› Longest measurement taken

FIRST FLOOR

| | | |
|-----------|-------------|---------------|
| Bedroom 1 | 3740 x 3497 | 12'3" x 11'5" |
| En-suite | 1227 x 2490 | 4'0" x 8'2" |
| Bedroom 2 | 2875 x 4168 | 9'4" x 13'7" |
| Bedroom 3 | 3677 x 2490 | 12'10" x 8'2" |
| Bedroom 4 | 2670 x 3075 | 8'8" x 10'10" |
| Bathroom | 2670 x 2007 | 8'8" x 6'6" |

PLEASE NOTE:

For illustration purposes only. All dimensions are + or - 50mm and these measurements should not be used for the purchase of carpets or furniture. Please see our Sales Executive for full specification and plot details at this development.

**CONSUMER
CODE FOR
HOME BUILDERS**

www.consumercode.co.uk



PARK VIEW

GEDLING

All enquiries:

0115 871 6703

or email: ParkView@keepmoat.com



keepmoat.com