



Sherlock Mews, Marylebone

London, W1U

£2,295,000

SOMMERVILLE FLURY

Sherlock Mews

Marylebone, London W1U

A beautiful freehold house enviably located in one of Marylebone's favourite cobbled mews. This wonderful home is currently laid out over four floors, benefitting from a large internal garage, air conditioning and fabulous roof garden.

On the ground floor there is a bedroom, currently used as a study with guest WC which could easily be reconstructed to create a shower room, and a large internal garage. Downstairs there is a modern kitchen with ample space for dining, a separate utility area and substantial laundry room.

Upstairs, occupying most of the first floor is a wonderful open plan reception and dining room, flooded with natural light. Additionally, to the rear is a family bathroom. There are two further bedrooms on the top floor, both with fitted storage; the primary bedroom has an ensuite shower room.

There is an exceptional roof garden offering great entertaining space.

This is a fabulous opportunity to acquire either a home or pied-à-terre in one of the London's finest locations.

SOMMERVILLE FLURY



Sherlock Mews

Marylebone, London W1U

Location:

Sherlock Mews is in a pretty cobbled mews off Paddington Street. Superbly located within the heart of Marylebone Village, just moments from Chiltern Street and its wonderful shops, restaurants and bars. Marylebone High Street is close by together with the greenery of Regent's Park.

Transport links are excellent at Bond Street, Oxford Circus, Baker Street and Regent's Park underground stations. There is easy access to the West and Heathrow via the A40.

Tenure: Freehold

City of Westminster

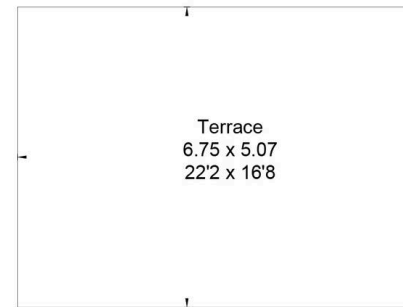
Council Tax band: H



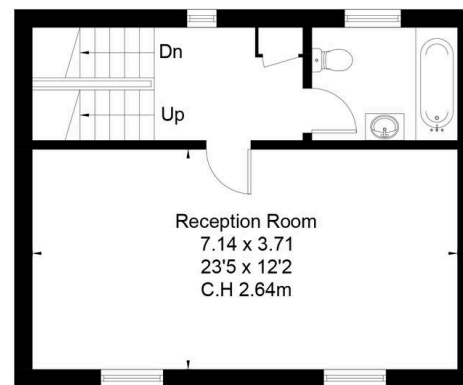
SOMMERVILLE FLURY

SHERLOCK MEWS ,W1U

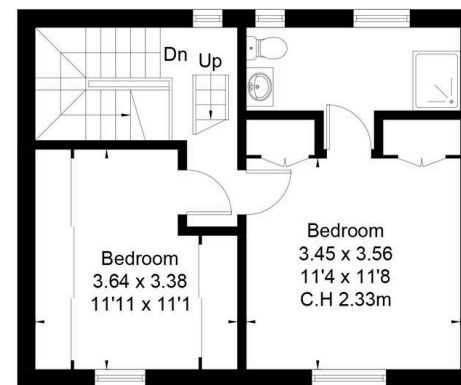
Approximate Floor Area = 153.3 sq m / 1650 sq ft
(Including Garage)



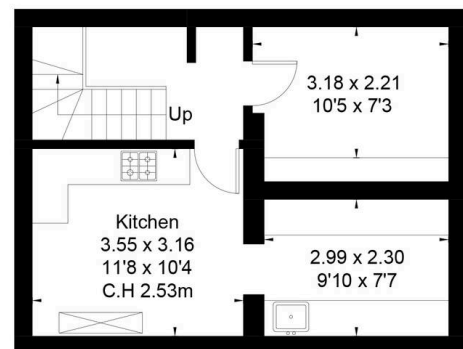
Third Floor



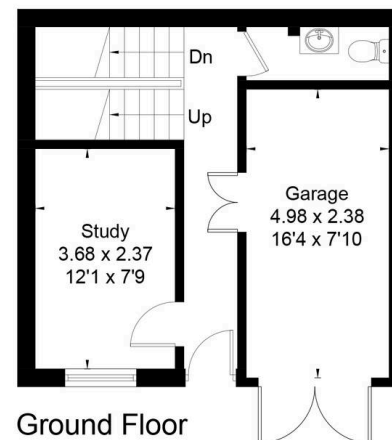
First Floor



Second Floor



Lower Ground Floor



Ground Floor



This floor plan has been drawn in accordance with RICS Property Measurement 2nd edition.
All measurements, including the floor area, are approximate and for illustrative purposes only @djd.london #76848

SOMMERVILLE FLURY

+44(0)20 3479 5314

21 Ellis Street, Knightsbridge, London SW1X 9AL

info@sommervilleflury.com

www.sommervilleflury.com