



New Walk, Leicester, LE1 6TF

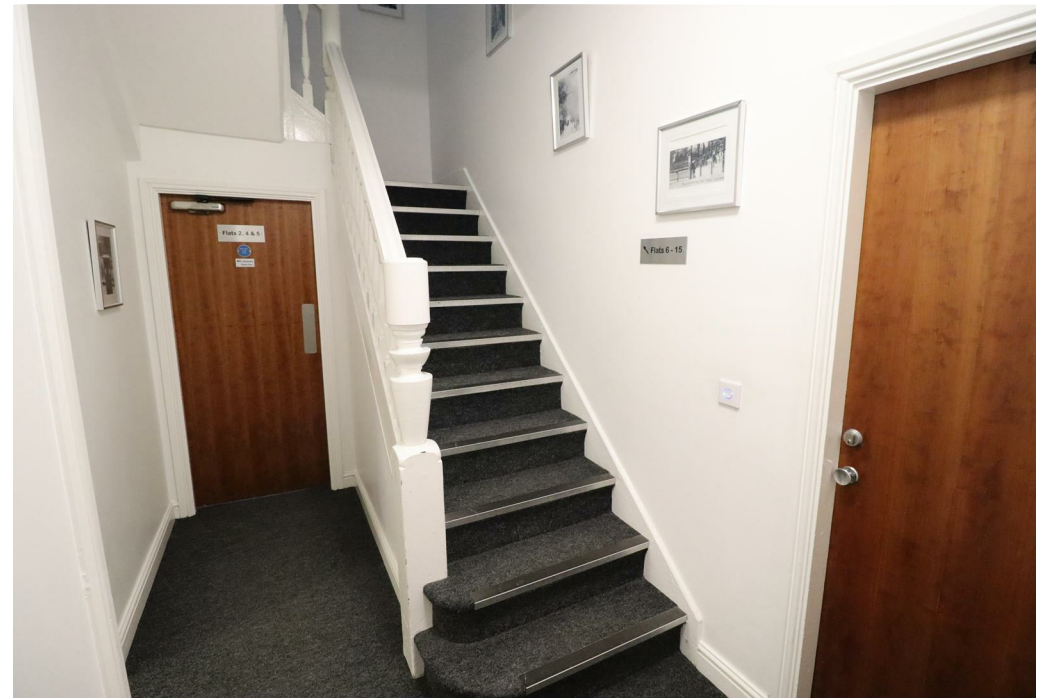


# Property Description

\*\*\* AVAILABLE IMMEDIATELY \*\*\* Deposit Alternative Available \*\*\* This contemporary one bedroom apartment is located on the sort after historic pedestrian promenade of New Walk Leicester City Centre. This promenade is renowned for its heritage, and the apartment offers the perfect blend of historical charm and modern living. In brief the property compromises of an entrance through a communal door and shared space, leading to stairs that access the apartment on the first floor. Upon entry, you are welcomed by an inviting hallway. To your immediate right is a neutral-toned main bedroom. Continuing down the hallway, you'll find a bright and airy open living space that seamlessly connects to the kitchen. The kitchen hosts a built in fridge freezer, washer dryer, dishwasher, oven hob and extractor fan. Finally there is a large sleek bathroom, with a shower above the bath. There is no garden space or any parking included, this property is offered part furnished. Council Tax Band D. Energy Rating D.











## Key Features

- Available Immediately
- Deposit Alternative Available
- New Walk, Leicester City Centre
- Apartment
- One Bedroom
- Part Furnished
- No Garden
- No Parking Included
- Council Tax Band D
- Energy Rating D

**£875 PCM**