



Cottesmore Avenue, Oadby, LE2 4SX

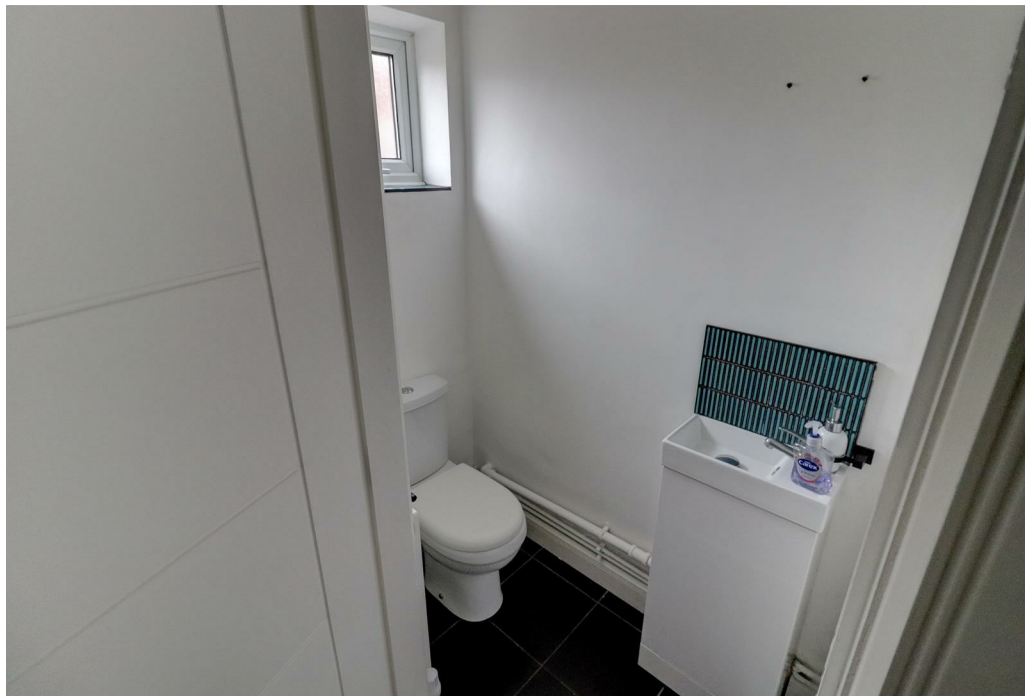
**SHELDON
BOSLEY
KNIGHT**

LAND AND
PROPERTY
PROFESSIONALS

Property Description

****Available immediately**** ****Deposit Alternative available**** A modern, well maintained property available in the popular area of Oadby. Outside there is a driveway with space for 2 cars and a private garage. As you enter the property there is a hallway with access to the lounge on the right. The lounge is newly light and spacious. The kitchen is contemporary and comes with built in Oven and a dishwasher, there is a seperate dining area next to the kitchen and a downstairs toilet, The back garden is a good size with plenty of countryside beyond the garden creating a peaceful, private space. Upstairs there are 4 good size bedrooms and a family sized bathroom. EPC Rating C. Council tax band D.







Key Features

- Available Immediately
- Deposit Alternative Available
- Oadby
- 4 Bedrooms
- Driveway
- Modern
- Large back garden
- Lounge
- Quiet neighbourhood

£1,600 PCM