



Victoria Park Road, Leicester, LE2 1XF

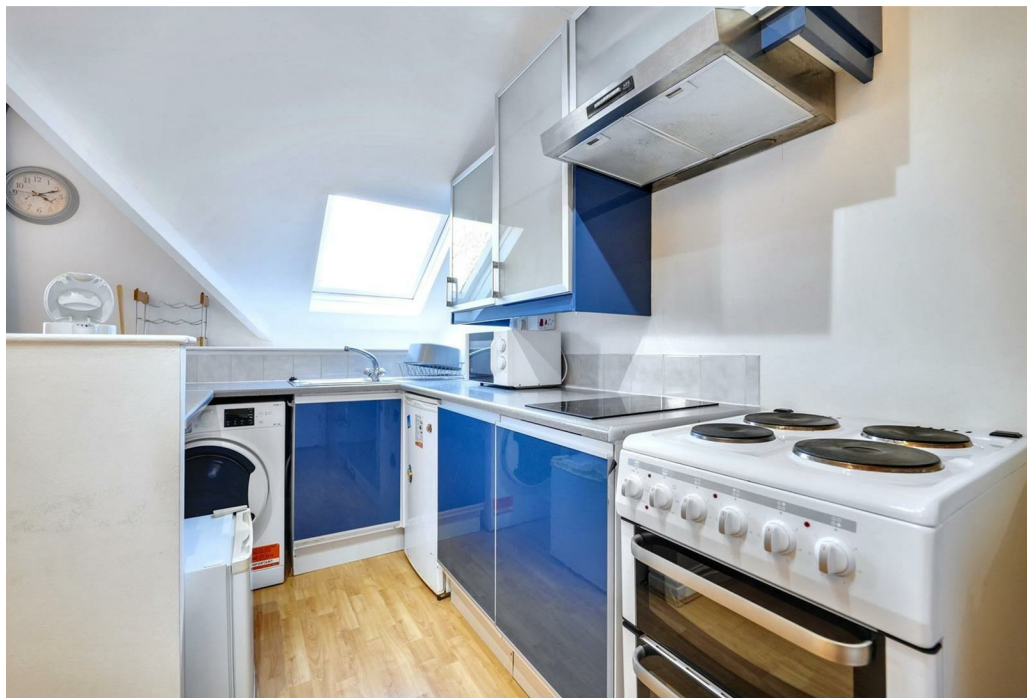


# Property Description

\*\*\* AVAILABLE MAY\*\*\* A top floor apartment offering light and airy accommodation, positioned on this desirable tree-lined road opposite Victoria Park. Victoria Park Road has long been regarded as one of the most sought after locations within suburban Leicester, its popularity derived not only from the quality of the housing stock but also due to the proximity and views across Victoria Park and convenience to the city centre with its shopping amenities, universities, hospitals and abundance of leisure and recreational facilities, along with local shopping along Queens Road and Allandale Road and excellent local schooling both in the State and private sector. The property is entered via a communal entrance hall with stairs leading to the apartment. There is a private entrance hall, sitting room with a window to the front, built-in wall unit and electric wall heater, open to the kitchen with a range of eye and base level units, stainless steel sink, two-ring induction hob, freestanding oven with electric hob and grill, fridge, freezer, microwave and washing machine. The double bedroom has uPVC double glazed window to the rear elevation and electric storage heater. The accommodation is completed by a bathroom with a three piece suite comprising low flush WC, pedestal wash hand basin and bath with shower over. The property enjoys the shared use of a communal basement/bike storage area and a communal paved yard area to the rear of the property. The property is offered furnished. Leicester City Council Tax Band A. Energy Rating E.











## Key Features

- Available May
- Clarendon Park, Leicester
- 1 Bedroom
- Top Floor Apartment
- Furnished
- On Street Permit Car Parking
- Leicester City Council Tax Band A
- Energy Rating E



**£725 PCM**