



2 RUDGATE GREEN NR WETHERBY, LS23 7GD

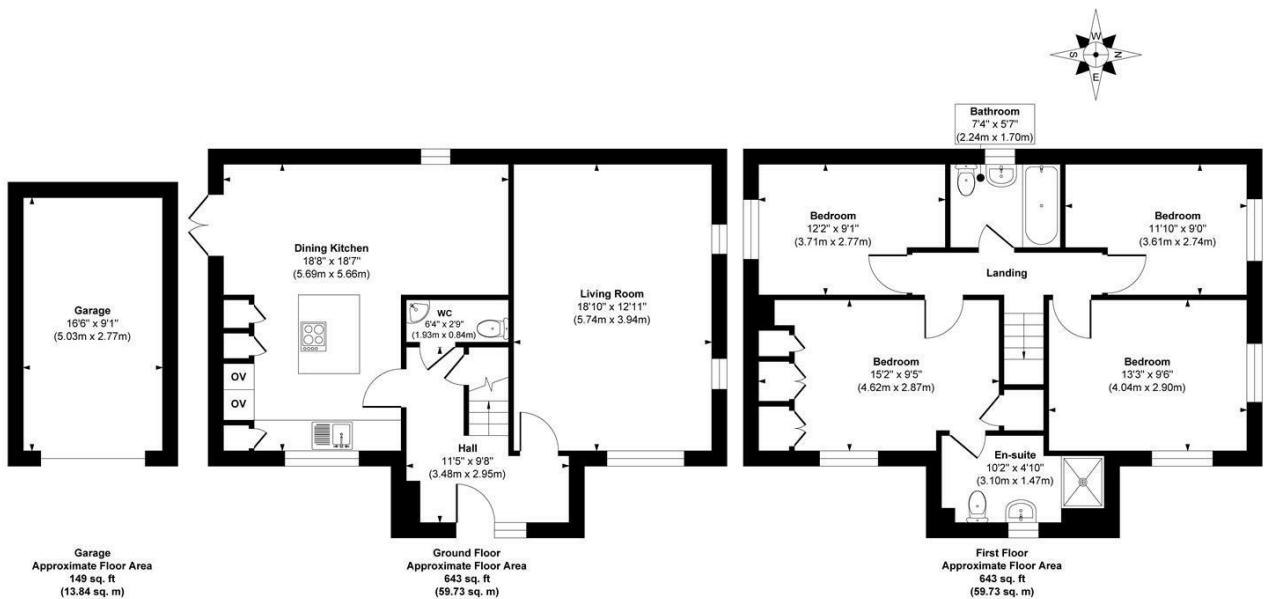
£425,000
FREEHOLD

Detached four-bedroom family home with wonderful open plan kitchen diner and large south-facing garden in Thorp Arch.

For further details or to book a viewing, contact Monroe Estate Agents Boston Spa on 01937 534755

MONROE

SELLERS OF THE FINEST HOMES



Approx. Gross Internal Floor Area 1435 sq. ft / 133.30 sq. m

Illustration for identification purposes only, measurements are approximate, not to scale.
Copyright © Zenith Creations.



Energy Efficiency Rating		
	Current	Potential
Very energy efficient - lower running costs		
(92 plus) A		
(81-91) B		
(69-80) C		
(55-68) D		
(39-54) E		
(21-38) F		
(1-20) G		
Not energy efficient - higher running costs		
England & Wales	EU Directive 2002/91/EC	

Agents Note: Whilst every care has been taken to prepare these particulars, they are for guidance purposes only. All measurements are approximate and are for general guidance purposes only and whilst every care has been taken to ensure their accuracy, they should not be relied upon and potential buyers/tenants are advised to recheck the measurements

Boston Spa Sales
181a, High Street Boston Spa
Wetherby
LS23 6AA

01937 534755
bostonspa@monroestateagents.com
www.monroestateagents.com

MONROE

SELLERS OF THE FINEST HOMES