



14 LODGE GARDENS

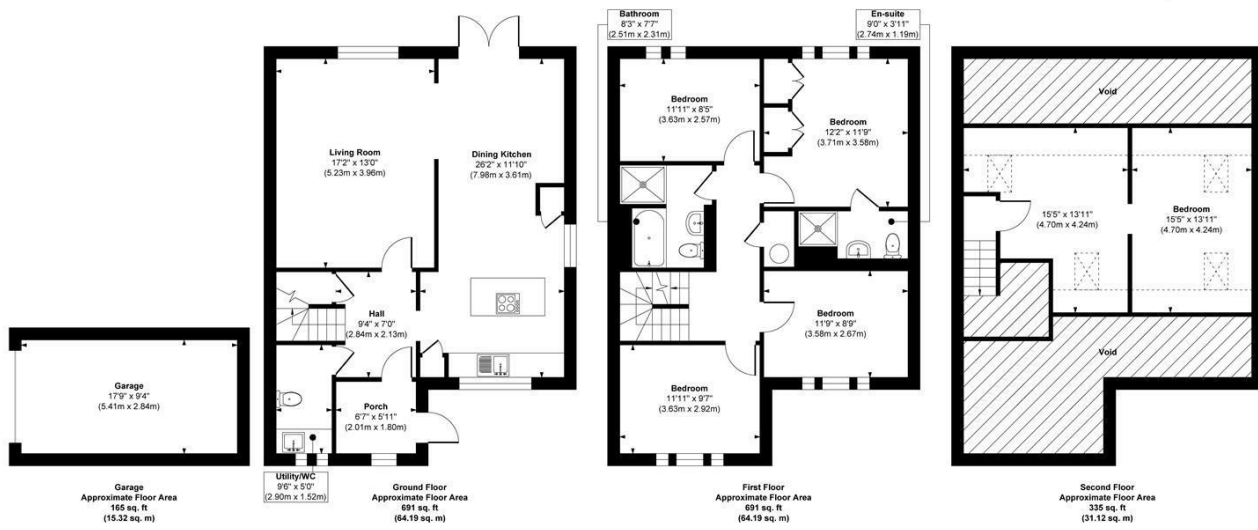
WETHERBY, LS23 6GZ

£625,000
FREEHOLD

Lodge Gardens is a beautifully presented five-bedroom family home offering spacious and versatile accommodation, gardens to the front and rear and fabulous countryside views.

MONROE

SELLERS OF THE FINEST HOMES



Approx. Gross Internal Floor Area 1882 sq. ft / 174.82 sq. m (Including Garage)

Illustration for identification purposes only, measurements are approximate, not to scale.

Copyright © Zenith Creations.

Energy Efficiency Rating		Current	Potential
Very energy efficient - lower running costs			
(92 plus) A			
(81-91) B			
(69-80) C			
(55-68) D			
(39-54) E			
(21-38) F			
(1-20) G			
Not energy efficient - higher running costs			
England & Wales		EU Directive 2002/91/EC	
		78	87

Agents Note: Whilst every care has been taken to prepare these particulars, they are for guidance purposes only. All measurements are approximate and are for general guidance purposes only and whilst every care has been taken to ensure their accuracy, they should not be relied upon and potential buyers/tenants are advised to recheck the measurements

Boston Spa Sales
181a, High Street Boston Spa
Wetherby
LS23 6AA

01937 534755
bostonspa@monroeestateagents.com
www.monroeestateagents.com

MONROE

SELLERS OF THE FINEST HOMES