



**157 Witton Street,
Northwich, CW9 5EA**

£1,850 Per month



Welcome to this stunning property located on Witton Street in the charming town of Northwich. This mid-terrace house, built in 2022, boasts a generous 1,604 sq ft of living space, perfect for a growing family.

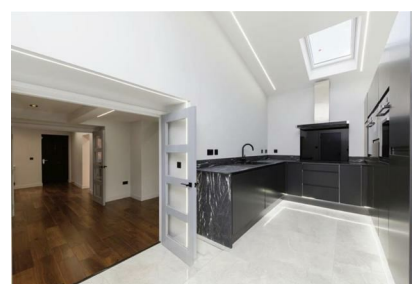
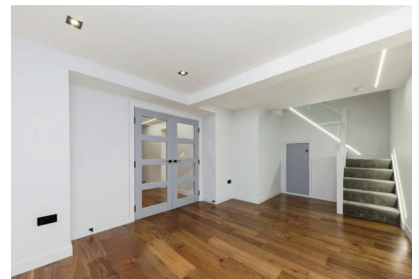
As you step inside, you'll be greeted by not just one, but three reception rooms, offering ample space for entertaining guests or simply relaxing with your loved ones. The modern kitchen is equipped with top-of-the-line NEFF appliances, making cooking a true delight.

With four spacious bedrooms, there's plenty of room for everyone in the family to have their own space. No more queuing for the bathroom in the morning, as this property features three beautifully designed bathrooms, ensuring convenience and comfort for all.

One of the standout features of this property is the electric charger with an allocated parking space, perfect for eco-conscious individuals or families with electric vehicles. Say goodbye to the hassle of searching for parking!

Located in a desirable area, this property offers not just a beautiful home, but also a fantastic lifestyle. Don't miss out on the opportunity to make this house your home. Book a viewing today and start envisioning the wonderful memories you could create in this lovely abode on Witton Street.

- AVAILABLE IMMEDIATELY
- THREE BATHROOMS
- FANTASTIC LOCATION
- ALLOCATED CAR PARK SPACE
- THREE RECEPTION ROOMS
- FOUR BEDROOMS
- MODERN INTERIOR
- ELECTRIC CHARGER



458 Cheetham Hill Road, Manchester, M8 9JW

Tel: 0161 960 0900 | Email: info@latchkeyandvault.co.uk

www.latchkeyandvault.co.uk