



Chantries  
& Pewleys



Cater Gardens  
Guildford





INTRODUCING

# 33 Cater Gardens

GUILDFORD, SURREY GU3 3BY

*This beautifully presented three-bedroom semi-detached home is situated in the highly sought-after Rydes Hill area of Guildford. Immaculately maintained throughout, it offers generous living space perfectly suited to modern family life.*



**3 BEDROOMS**



**RECENTLY RENOVATED**



**HIGH STANDARD OF FINISH THROUGHOUT**



**ELECTRIC CAR CHARGER**



**QUIET CUL-DE-SAC**

**Tenure: Freehold**  
**Council Tax Band: E**  
**EPC:**





The  
Brommes

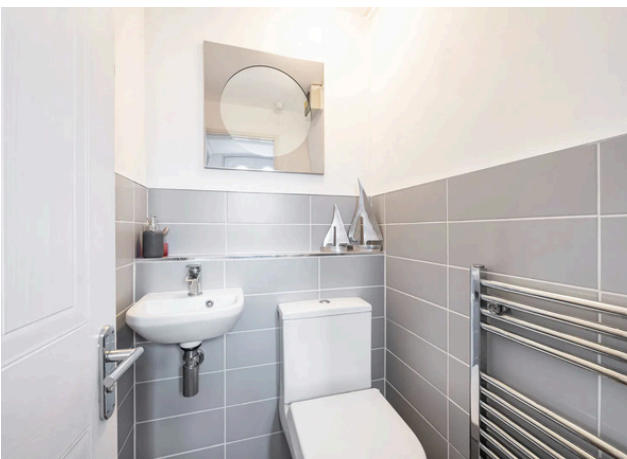
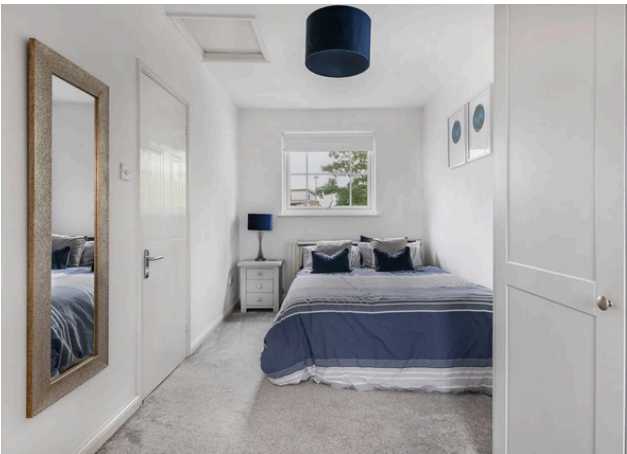














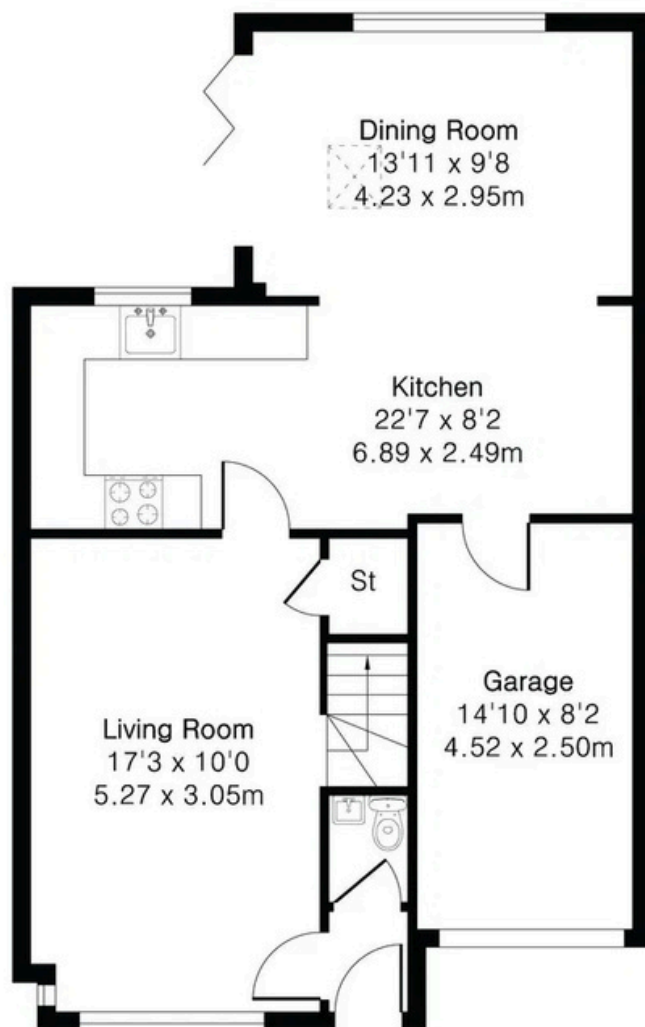




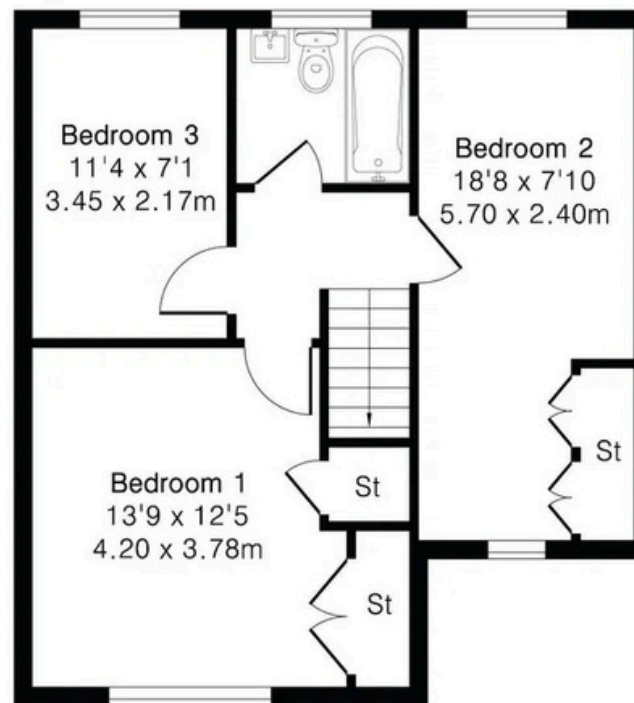
**Approximate Gross Internal Area 1164 sq ft - 108 sq m  
(Including Garage)**

Ground Floor Area 679 sq ft – 63 sq m

First Floor Area 485 sq ft – 45 sq m



Ground Floor



First Floor





01483 405222

[guildford@chantriesandpewleys.com](mailto:guildford@chantriesandpewleys.com)

2 St Marys Terrace, Mill Lane, Guildford, Surrey GU1 3TZ