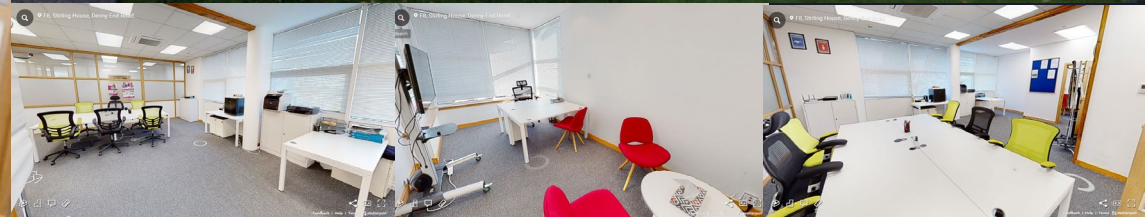


# Available Space overview

## The "Meteor" Suite (F8)



## The "Meteor" (F8) Stirling House

Due to the recent expansion of our existing client, there is now a chance to let this "room with a view" space that was designed to optimise modern hybrid working. At 54.8m<sup>2</sup> and with its own meeting room, this is a "must see" space. As the North campus of Cambridge Innovation Park's rapidly expanding ecosystem it affords lease portability (the flexible upscaling option) to all its members across both existing and planned developments.

Integrated into a vibrant and rapidly growing entrepreneurial community, you will find like minded people open to collaboration and will be supported through our extensive links to the renowned Cambridge business support community. With a range of superb current and future business and leisure facilities; ample parking; and a real focus on sustainable development, this is a must-view for ambitious companies looking to make their mark in Cambridge.

This particular 8+ person hybrid space is something very special. It comprises flexible Office/Lab/Meeting space with an office overlooking the front of our landscaped site.

Conveniently located North of Cambridge city, being close to the A10, it provides easy access to the A14 & M11/A1(M) and forms part of the hugely impressive modernisation plans that are being developed across our campuses.



In addition to being conveniently located, the park hosts a wealth of facilities, including ample parking, gym, café/bar, beauty salon, lots of green space and facilities such as showers, cycle shelters and EV charging points.

We are currently offering this unit on a 3 year rent deal of

**£20,500 +vat pa inclusive** of service charge

Call **Stephanie Fretwell** on **01223 750 330** to  
book a viewing or email her at  
[stephanie@cambridgeinnovationparks.co.uk](mailto:stephanie@cambridgeinnovationparks.co.uk)

Cambridge Innovation Parks

#Cambridge #CambridgeOffice #CambridgeBusiness  
#Officespace #UkOffice #Ely #ElyBusiness  
#OfficeToLet #office #OfficeAccommodation  
#CambridgeCRE

