



# *Rendell Street*

Loughborough

3 Bed Detached House • LE11 1LL • £1,000 pcm • £1,150 Deposit



# Rendell Street, Loughborough

Now available to let, a three-bedroom, semi-detached home with excellent access to the town centre. The property features an open-plan living and dining area with garden views, a modern kitchen, three bedrooms situated on the first floor, alongside a modern three-piece bathroom.

### Lounge

A bright and spacious room with a large bay window situated to the front of the property.

### Dining Area

A spacious open-plan dining area with direct access to the rear garden and kitchen.

### Kitchen

Overlooking the rear garden, a smart fitted kitchen including a cooker, and hob.

### Master Bedroom

A large double bedroom with bay window situated at the front of the property.

### Bedroom Two

A large double bedroom, overlooking the garden, with fitted storage.

### Bedroom Three

A single bedroom, ideal for a child’s room or home office, overlooking the roadside.

### Bathroom

A smart, three-piece bathroom complete with shower over the bath and heated towel rail.

### Garden

A sizeable rear garden, with side access to the front of the property and shed.

### Parking

A spacious driveway.

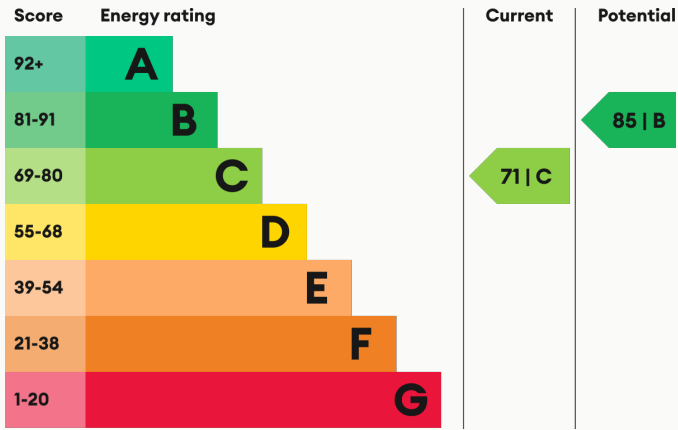
### Heating

Gas-fired central heating.

### Glazing

Modern, good quality, uPVC double glazing.

## Energy Performance



We aim to make our particulars both accurate and reliable. However they are not guaranteed; nor do they form part of an offer or contract. If you require clarification on any points then please contact us, especially if you are traveling some distance to view. All measurements are to widest point.





Kitchen / Diner



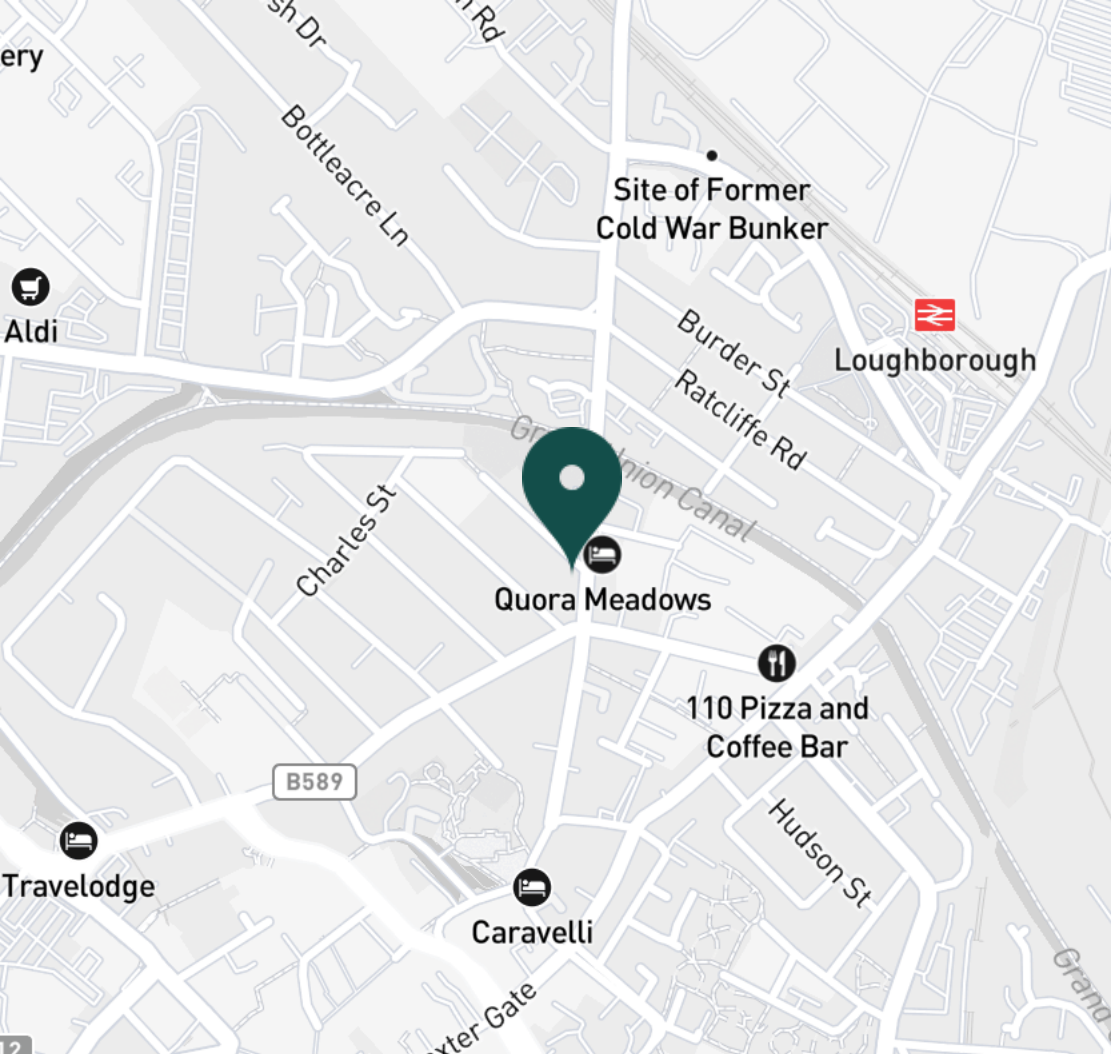
Lounge



Lounge



Lounge



#### SUPERMARKETS

Tesco Superstore Loughborough	0.5 mi
Aldi Loughborough	0.6 mi
Marks & Spencer	0.6 mi
Lidl Loughborough	0.8 mi
Sainsburys Loughborough	0.9 mi

#### GYMS

CrossFit Loughborough	0.1 mi
PureGym Loughborough	0.4 mi
Anytime Fitness Loughborough	0.5 mi
Dynamite Gym Ltd	0.7 mi
NPC Performance Centre	1.0 mi

#### TRAIN STATIONS

Loughborough	0.6 mi
Barrow upon Soar	4.1 mi
Sileby	6.0 mi
Syston	10.3 mi
East Midlands Parkway	10.3 mi

#### NURSERY SCHOOLS

Babblebrooke Day Nursery	0.4 mi
Cobden Childrens Centre	0.5 mi
Small World Nursery	0.8 mi
Lime Tree Nursery	0.8 mi
Kingscliffe Day Nursery	0.9 mi

#### PRIMARY SCHOOLS

Rendell Primary School	0.2 mi
Cobden PS	0.7 mi
St Marys Catholic PS	0.8 mi
Fairfield Preparatory Sch	1.0 mi
Loughborough CE PS	1.2 mi

#### HIGH SCHOOLS

Limehurst Academy	0.3 mi
RNIB College Loughborough	1.2 mi
Our Lady's Convent Sch	1.2 mi
Loughborough High Sch	1.4 mi
Loughborough Grammar Sch	1.7 mi

Discover  
*Loughborough*





- ✓ Close to Town Centre
- ✓ Three Bedrooms
- ✓ Driveway
- ✓ Great Family Home
- ✓ Bay Window
- ✓ Loughborough





Kitchen



Master Bedroom



Master Bedroom



Master Bedroom



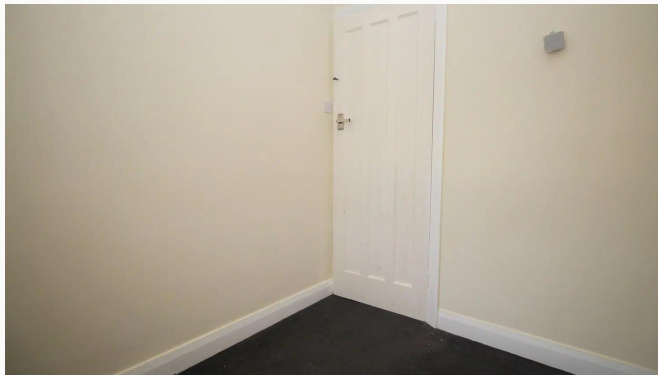
Bedroom Two



Bedroom Two



Bedroom Three

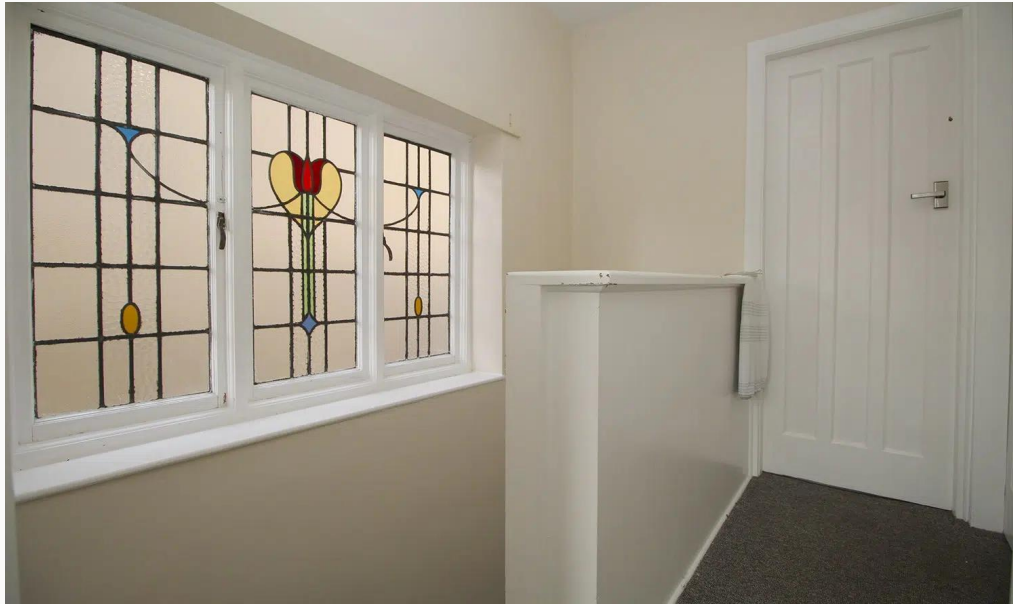


Bedroom Three



Bathroom





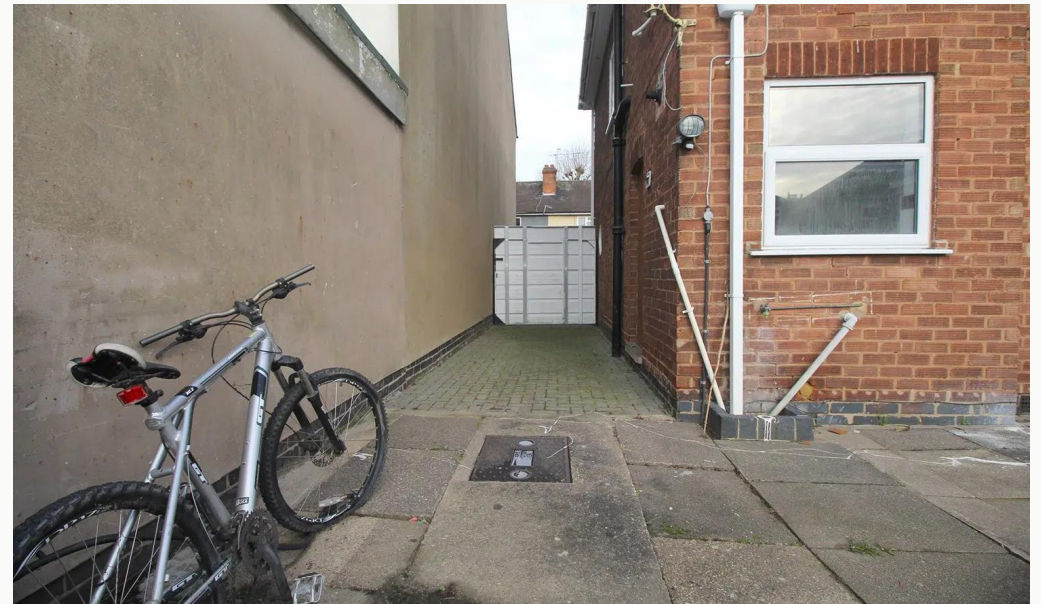
Landing



Garden



Garden



Garden



Side Gate



**Available**  
From 10/12/2025

**Comes**  
Unfurnished

**Bedrooms**  
3

**Receptions**  
2

**Bathrooms**  
1

**Parking**  
Driveway

**Postcode**  
LE11 1LL

**Rent**  
£1,000 pcm

**Deposit**  
£1,150

**EPC**  
71 | C

**Council Tax Band**  
B

**ID**  
#15237

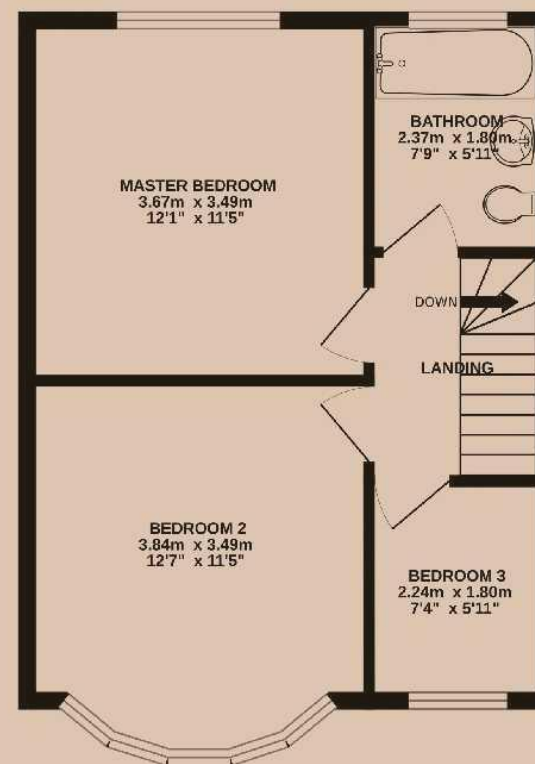
**Updated**  
10/12/2025



GROUND FLOOR  
37.7 sq.m. (406 sq.ft.) approx.



1ST FLOOR  
37.7 sq.m. (406 sq.ft.) approx.



# *Have a property like this? Let's work together.*

Design and marketing are at the heart of our approach. With most people now looking for property online, we can get our clients' properties in front of as many people as the most prominent national agents. Where we differ is in the quality of our work. We create stunning digital particulars that highlight the individual attributes of every property we market, with videos and floor plans as standard.



**OUR OFFICE**  
7 Biggin Street  
Loughborough, LE11 1UA

**CONTACT US**  
01509 320 320  
let@huntleys.net

