

A modern indoor swimming pool with lounge chairs and large windows. The pool is rectangular and filled with clear blue water. To the left of the pool, there are two lounge chairs with light-colored cushions. The pool is surrounded by a dark grey tiled deck. In the background, there are large windows and a brick wall. The ceiling has a recessed light fixture with a blue glow. The overall atmosphere is clean and contemporary.

The Gate

Loughborough

2 Bed Ground Floor Apartment • LE11 1GJ • £1,300 pcm • £1,490 Deposit



The Gate, Loughborough

Set in the highest specification development that Loughborough has to offer. This premium, two double bedroom ground-floor apartment is ready for its first occupation. In the developers own words "The Gate offers a prestigious collection of luxury apartments with residents gym, residents swimming pool, communal 'hot desk' area and meeting room, parking, daily concierge service. This new 'Waterside Village' offers the perfect live, work and play living experience". Photographs, video and floor plan are of actual property.

Lounge / Diner

Contemporary living area that is open plan to the kitchen and runs the full depth of the apartment. Featured floor-to-ceiling window, USB equipped PowerPoints and underfloor heating.

Kitchen

A Pullman kitchen in charcoal with matching worktop and brick-bond tiling. Hidden away behind the smart cabinets there are all the integrated appliances including a fridge-freezer, dual ovens, washer-dryer, easy-clean hob and a dishwasher. Open plan to the living area.

Master Bedroom

Elegant and spacious bedroom with benefits of an en-suite shower room featured floor-to-ceiling window, USB equipped PowerPoints and underfloor heating.

Bedroom Two

Generously proportioned, with dimensions almost identical to the Master bedroom, featured floor-to-ceiling window, USB equipped PowerPoints and underfloor heating.

Bathroom

This beautiful three-piece bathroom comes complete with a "rain shower" head over the bath, heated towel rail and shaving point. Classic, brick-bond tiling completes the look.

Ensuite

A three-piece en-suite shower room with a matching finish to the bathroom, heated towel rail and shaving point. Classic, brick-bond tiling completes the look.

Parking

Allocated parking to the front of the property for one car with further visitors spaces available.

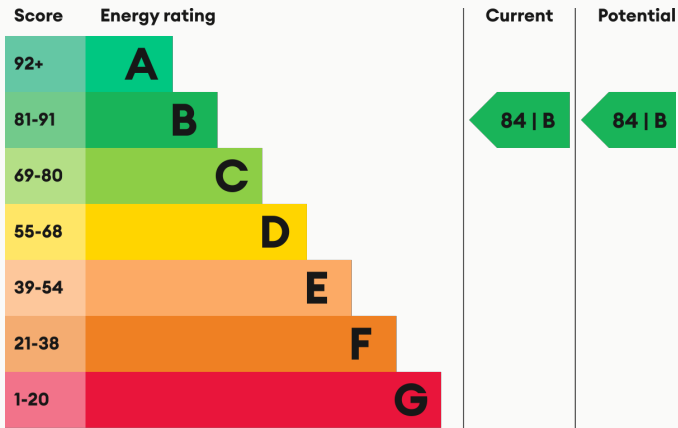
Heating

Multi-zoned, underfloor heating.

Glazing

Modern, good quality, uPVC double glazing.

Energy Performance



We aim to make our particulars both accurate and reliable. However they are not guaranteed; nor do they form part of an offer or contract. If you require clarification on any points then please contact us, especially if you are traveling some distance to view. All measurements are to widest point.



Lounge / Diner



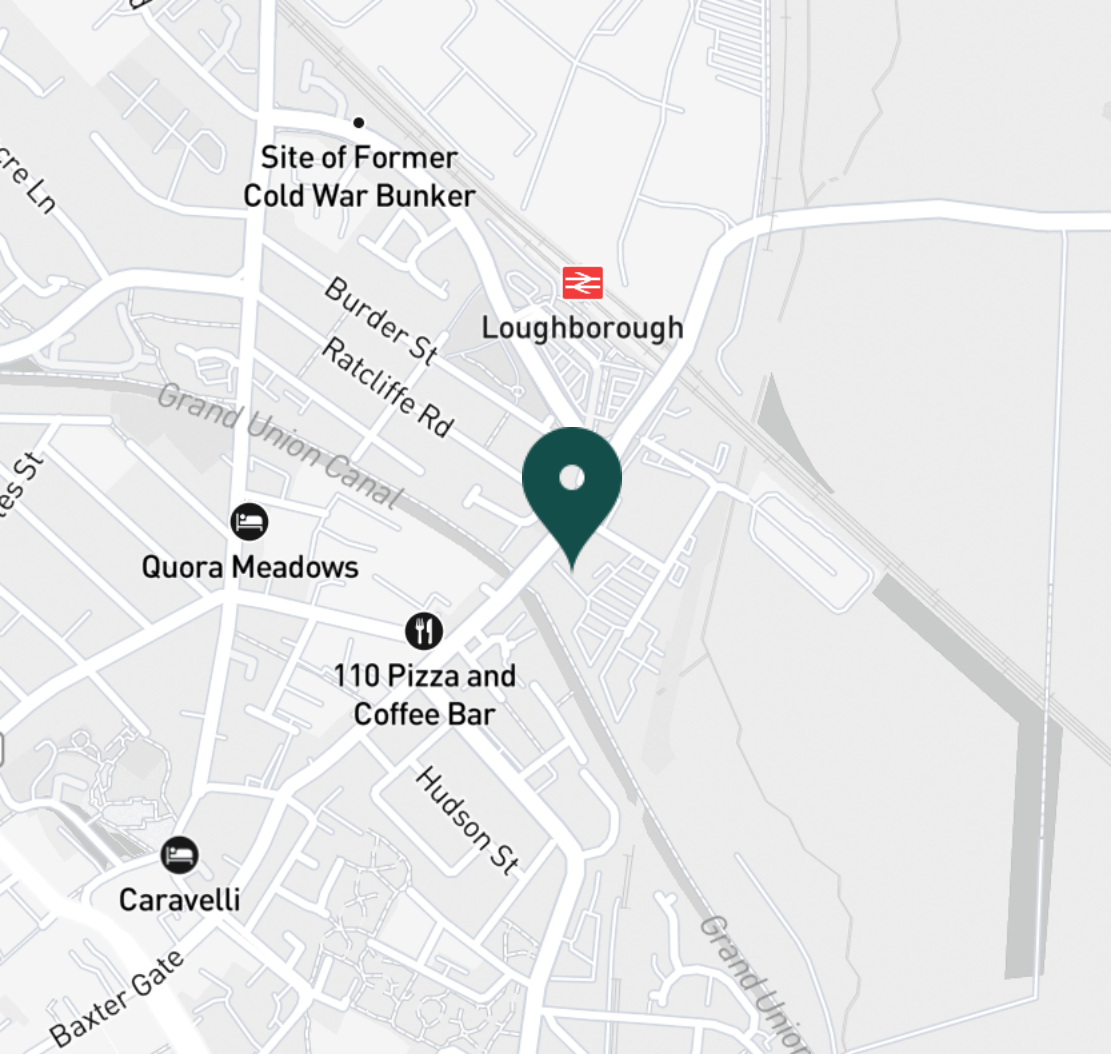
Lounge / Diner



Lounge / Diner



Lounge / Diner



SUPERMARKETS

Tesco Superstore Loughborough	0.9 mi
Marks & Spencer	1.0 mi
Aldi Loughborough	1.1 mi
Lidl Loughborough	1.1 mi
Sainsburys Loughborough	1.2 mi

GYMS

CrossFit Loughborough	0.5 mi
PureGym Loughborough	0.7 mi
Anytime Fitness Loughborough	0.8 mi
Dynamite Gym Ltd	0.9 mi
NPC Performance Centre	1.0 mi

TRAIN STATIONS

Loughborough	0.4 mi
Barrow upon Soar	5.3 mi
Sileby	6.0 mi
Syston	10.3 mi
East Midlands Parkway	10.5 mi

NURSERY SCHOOLS

Cobden Childrens Centre	0.7 mi
Babblebrooke Day Nursery	0.7 mi
Lime Tree Nursery	0.9 mi
Small World Nursery	1.1 mi
Emmanuel PS	1.2 mi

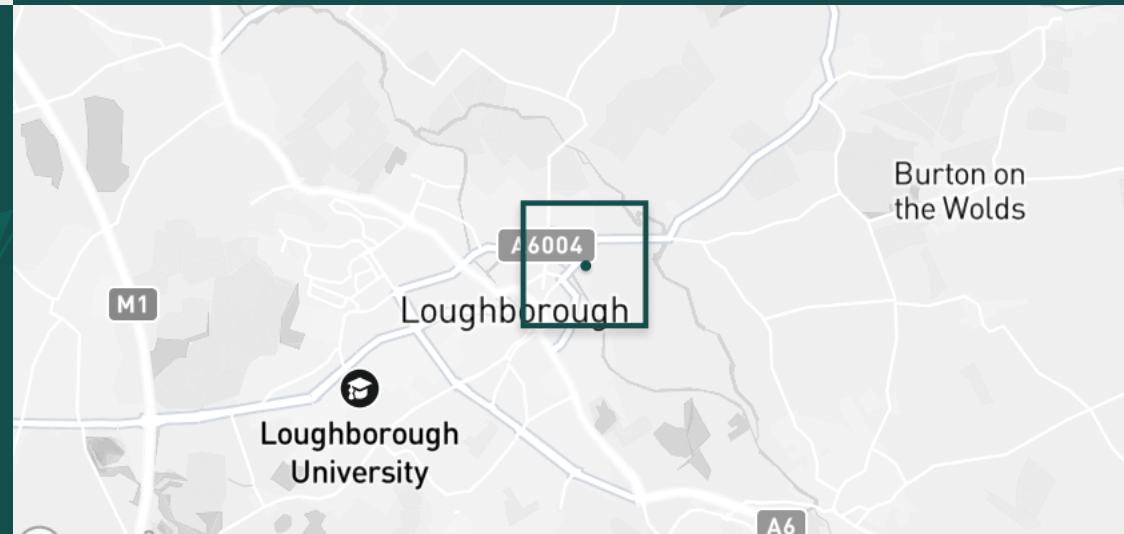
PRIMARY SCHOOLS

Rendell Primary School	0.5 mi
Cobden PS	0.9 mi
Fairfield Preparatory Sch	1.0 mi
St Marys Catholic PS	1.3 mi
Our Lady's Convent Sch	1.4 mi

HIGH SCHOOLS

Limehurst Academy	0.6 mi
Our Lady's Convent Sch	1.4 mi
Loughborough High Sch	1.4 mi
RNIB College Loughborough	1.6 mi
Loughborough Grammar Sch	1.7 mi

Discover
Loughborough

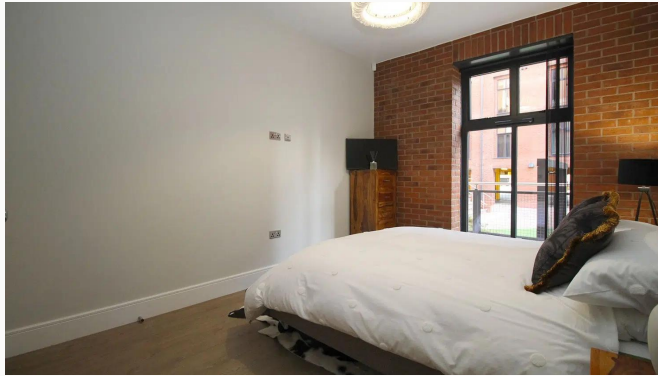


- ✓ Communal Swimming Pool
- ✓ Concierge
- ✓ Communal Gym
- ✓ Underfloor Heating
- ✓ Communal Offices
- ✓ Ground Floor Apartment





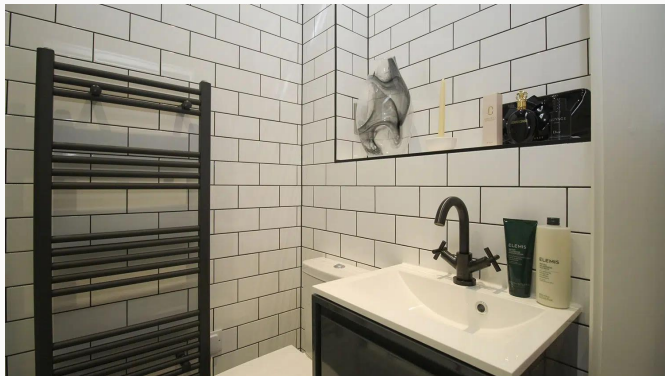
Master Bedroom



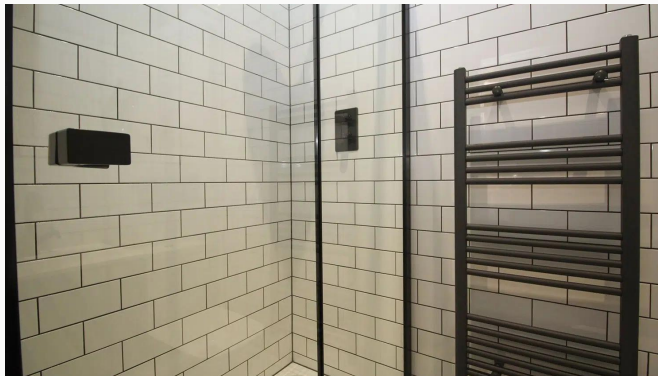
Master Bedroom



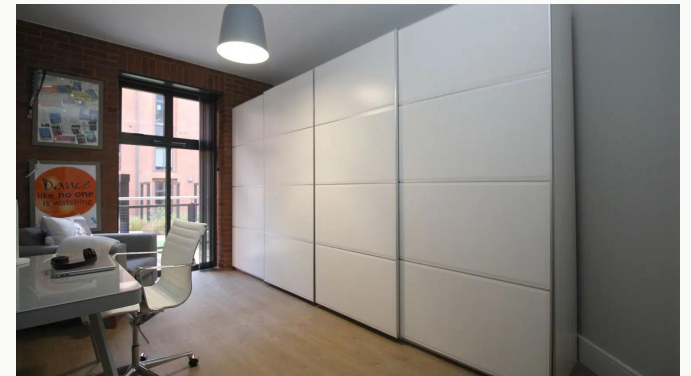
Master Bedroom



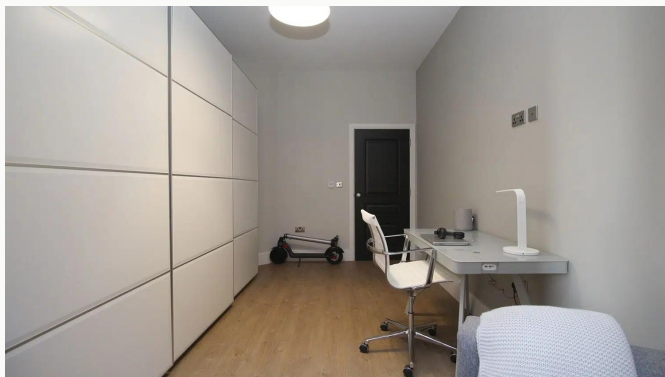
Ensuite



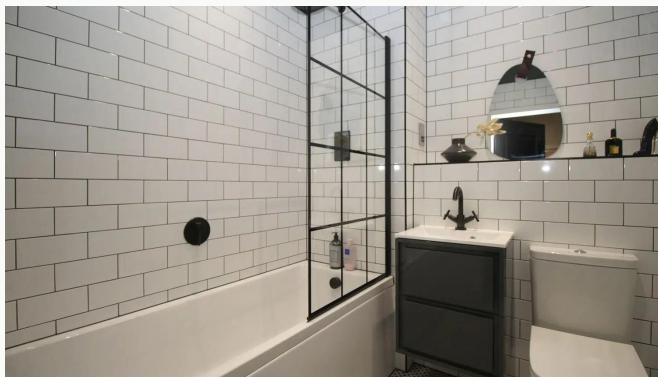
Ensuite



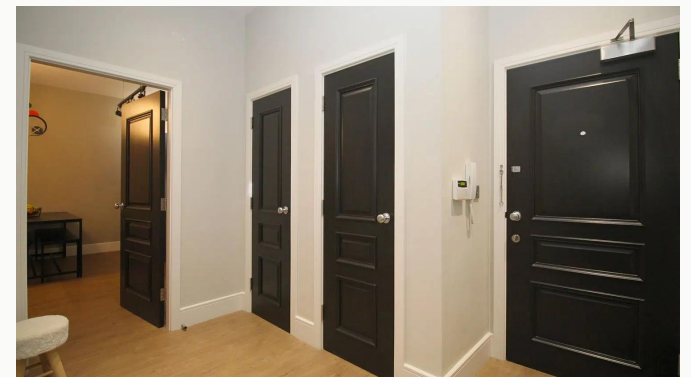
Bedroom Two



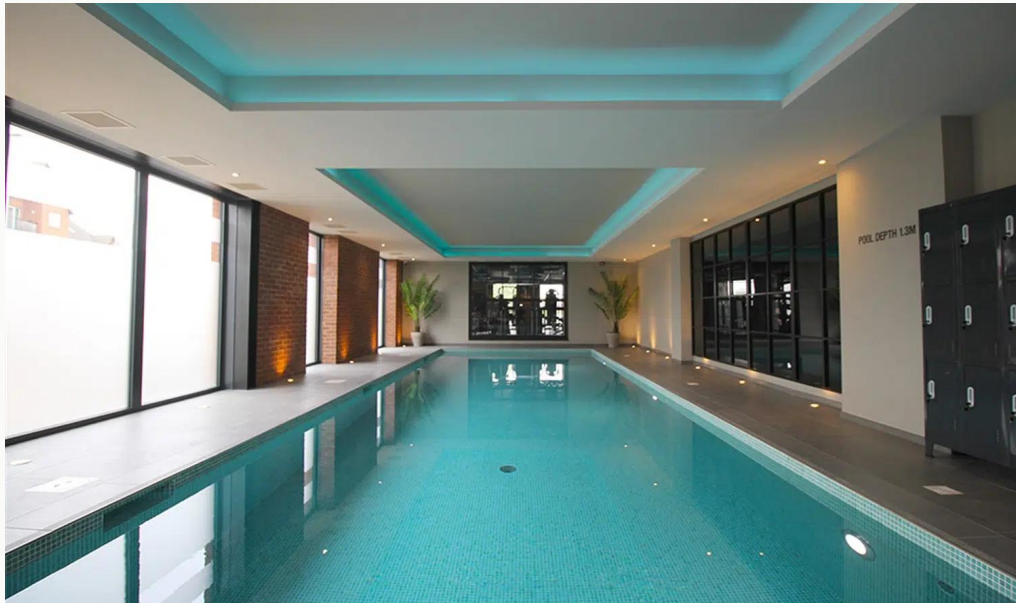
Bedroom Two



Bathroom



Hallway



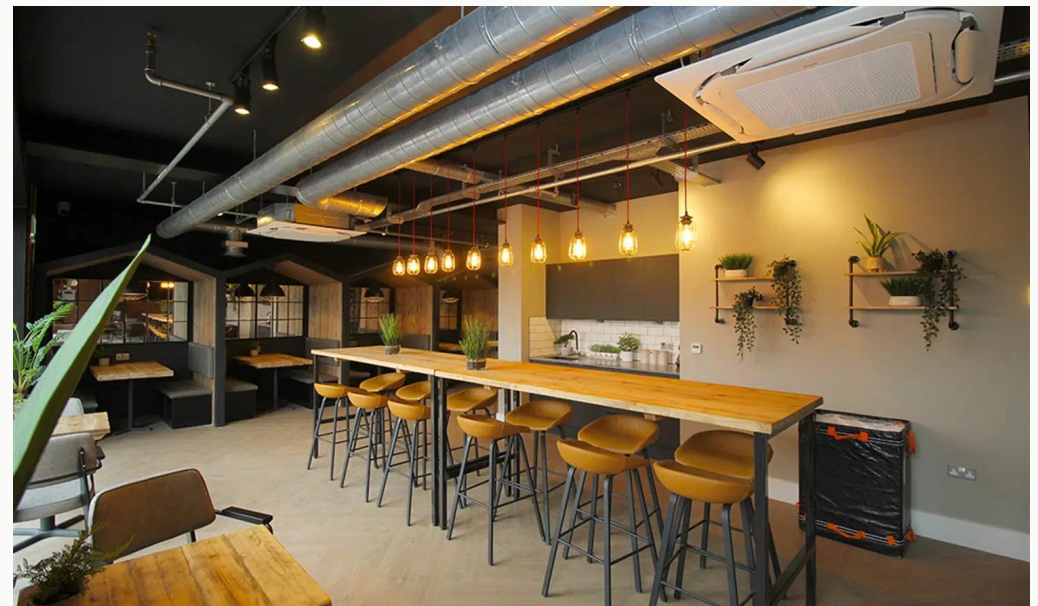
Swimming Pool



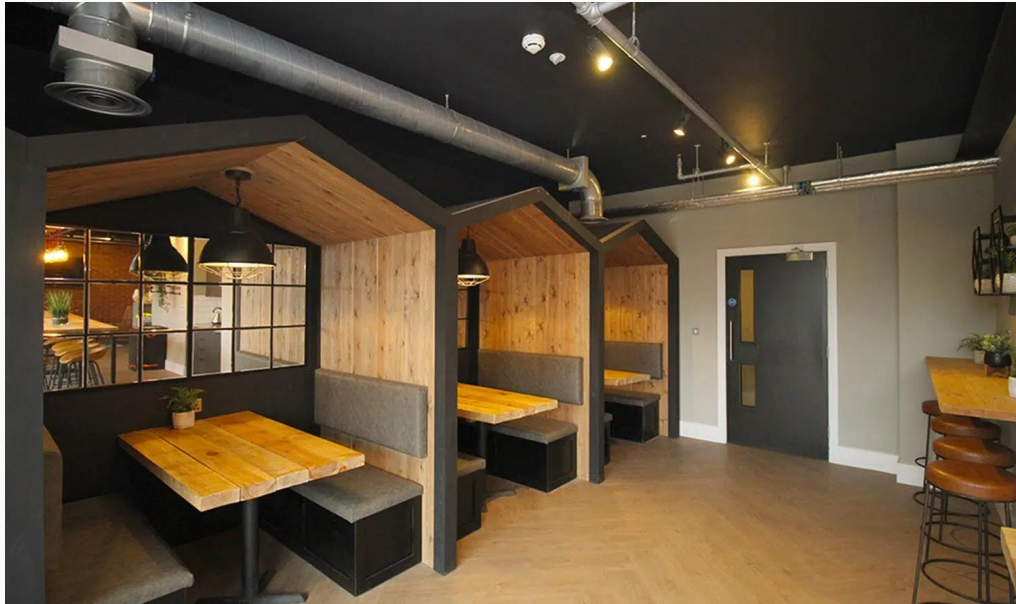
Gym



Gym



Office Area



Office Area



The Gate

Available
From 05/12/2025

Comes
Unfurnished

Bedrooms
2

Receptions
1

Bathrooms
2

Parking
Allocated

Postcode
LE11 1GJ

Rent
£1,300 pcm

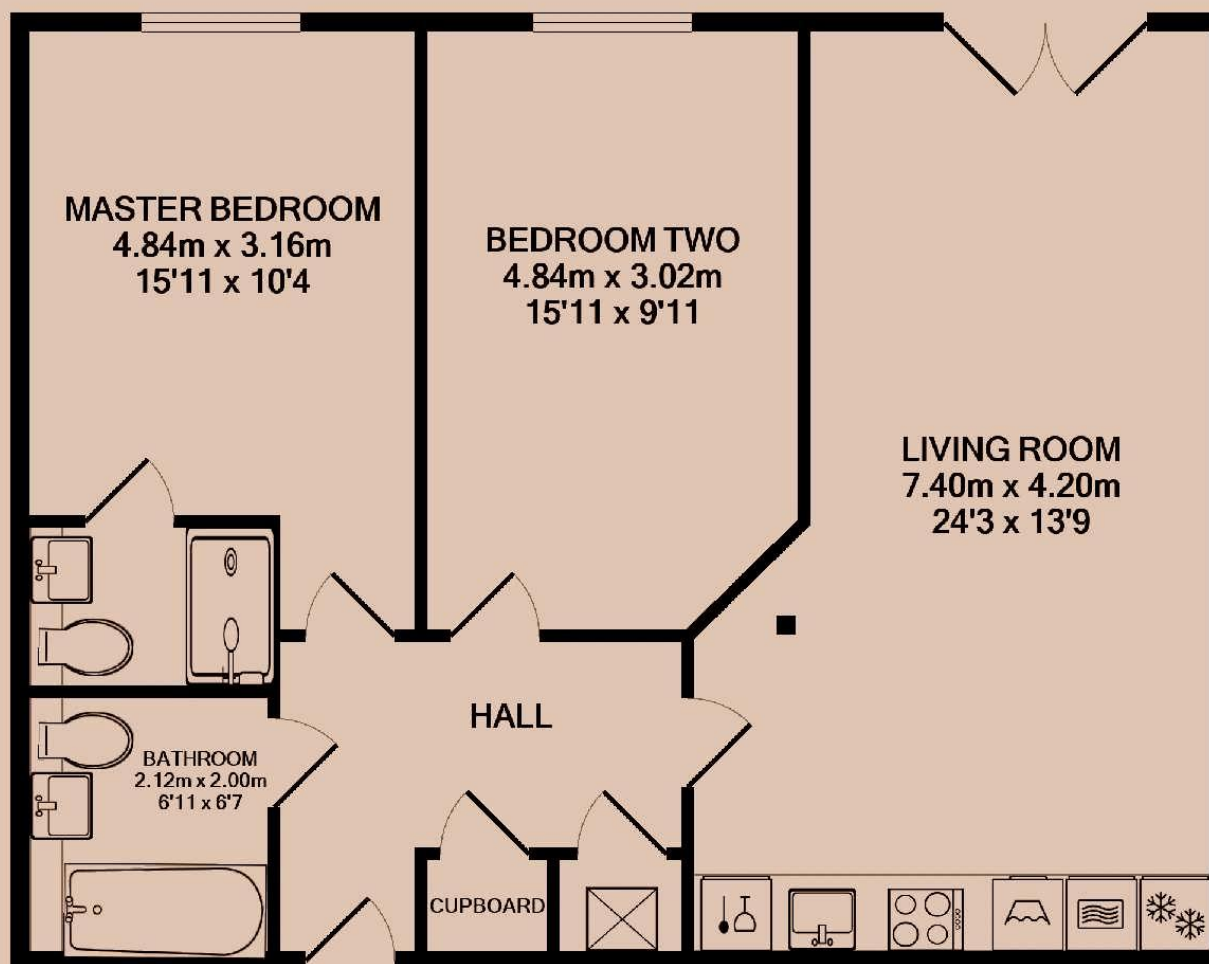
Deposit
£1,490

EPC
84 | B

Council Tax Band
C

ID
#8620

Updated
05/12/2025



Have a property like this? Let's work together.

Design and marketing are at the heart of our approach. With most people now looking for property online, we can get our clients' properties in front of as many people as the most prominent national agents. Where we differ is in the quality of our work. We create stunning digital particulars that highlight the individual attributes of every property we market, with videos and floor plans as standard.



OUR OFFICE
7 Biggin Street
Loughborough, LE11 1UA

CONTACT US
01509 320 320
let@huntleys.net

