



# *Braid Close*

## Loughborough

4 Bed Detached House • LE11 2AY • £1,850 pcm • £2,130 Deposit





# Braid Close, Loughborough

Situated within The Chimes development in Loughborough. A detached, four-bedroom house, presented in excellent condition. This unfurnished property comes with a large kitchen/diner, lounge, utility, four bedrooms, bathroom, ensuite shower room, and water closet. To the rear of the property is a beautiful, private garden. To the side of the property is a drive for parking, leading to the single garage. Soon available to let.

## Lounge

Overlooking the street, a large living room.

## Kitchen

A sizeable kitchen, with enough space to be used as an additional lounge or diner. This kitchen comes equipped with a new fridge/freezer, dishwasher, double oven, large gas hob, and breakfast bar. Overlooks the rear garden.

## Utility

A practical utility room set beside the kitchen. This room comes with a washing machine.

## Master Bedroom

The largest of the four bedrooms. This double bedroom comes access to an ensuite shower room.

## Bedroom Two

A second double bedroom on the first floor.

## Bedroom Three

A third double bedroom on the first floor.

## Bedroom Four

A fourth bedroom on the first floor, this room could also be used as a study.

## Bathroom

The primary bathroom, this modern three-piece washroom comes with a bath, sink, toilet, and shower above the bath.

## Ensuite

Accessed via the master bedroom, a neutral shower room including a walk-in shower, sink, and toilet.

## Garden

Set beside the house, a sizeable and private garden. Side access to the drive and garage. Decked space towards the bottom of the garden.

## Parking

Driveway parking available, including access to the single garage.

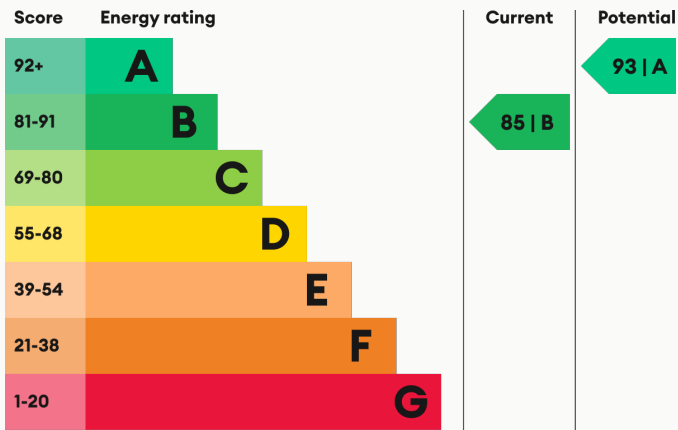
## Heating

Gas-fired central heating.

## Glazing

Modern, good quality, uPVC double glazing.

## Energy Performance



We aim to make our particulars both accurate and reliable. However they are not guaranteed; nor do they form part of an offer or contract. If you require clarification on any points then please contact us, especially if you are traveling some distance to view. All measurements are to widest point.



Kitchen / Diner



Kitchen / Diner

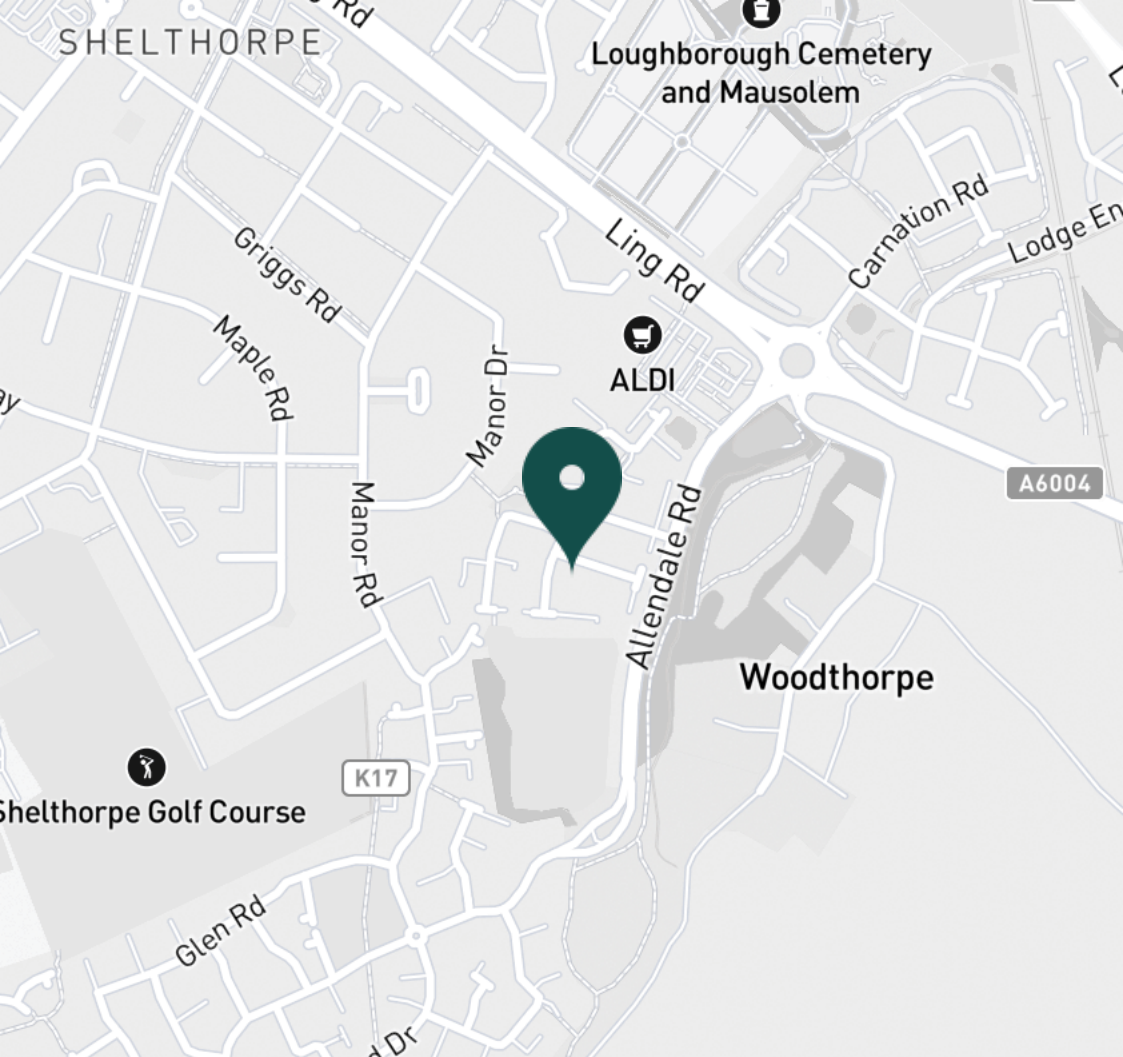


Kitchen / Diner



Kitchen





#### SUPERMARKETS

Tesco Extra Loughborough	1.0 mi
Co-op Food Quorn	1.5 mi
Sainsburys Loughborough	2.1 mi
Co-op Food Knightthorpe Rd	2.4 mi
Co-op Food Barrow Upon Soar	2.5 mi

#### GYMS

Fit4Less	1.7 mi
Radmoor Centre	1.8 mi
Loughborough University Pool	1.9 mi
Rosemary Conley Fitness Club	1.9 mi
Loughborough Sport	2.0 mi

#### TRAIN STATIONS

Barrow upon Soar	2.7 mi
Loughborough	3.2 mi
Sileby	4.6 mi
Syston	8.9 mi
South Wigston	9.8 mi

#### NURSERY SCHOOLS

Parkside PS	1.0 mi
Shelthorpe Childrens Centre	1.1 mi
Westwards Nursery	1.3 mi
Quorn Nursery School	1.7 mi
Emmanuel PS	1.7 mi

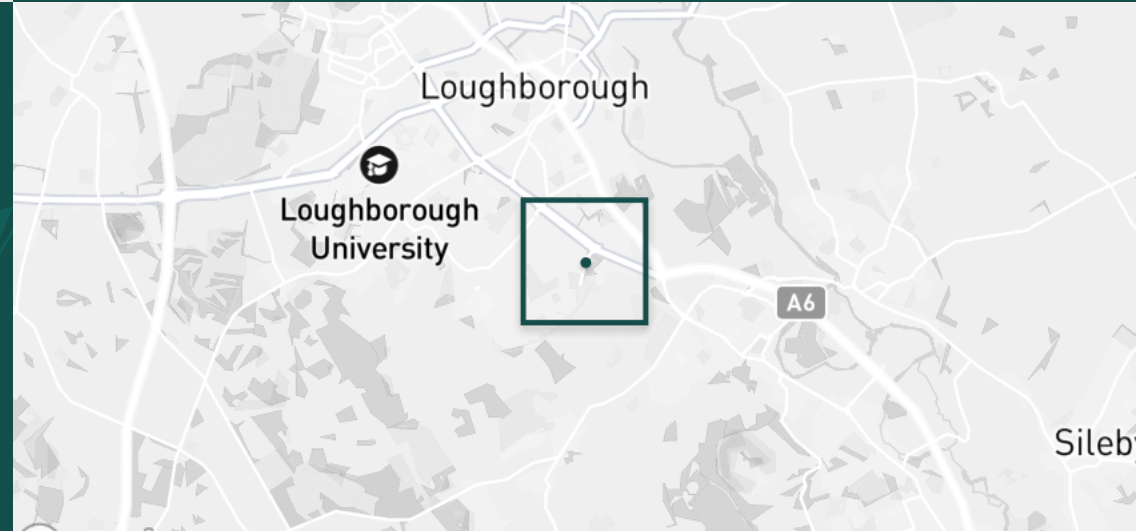
#### PRIMARY SCHOOLS

Beacon Primary Academy	1.1 mi
Sacred Heart Catholic PS	1.2 mi
Loughborough Grammar Sch	1.3 mi
Our Lady's Convent Sch	1.3 mi
Outwoods Edge PS	1.4 mi

#### HIGH SCHOOLS

Loughborough Grammar Sch	1.3 mi
Our Lady's Convent Sch	1.3 mi
Rawlins Academy	1.6 mi
Woodbrook Vale	1.7 mi
Loughborough College	1.8 mi

Discover  
*Loughborough*



- ✓ Four Bedrooms
- ✓ Unfurnished
- ✓ Ensuite
- ✓ Garage
- ✓ Beautiful Garden
- ✓ Modern Home







Kitchen / Diner



Kitchen



Kitchen / Diner



Kitchen / Diner



Utility



Lounge



Lounge



Lounge



Lounge





Lounge



Master Bedroom



Master Bedroom



Master Bedroom



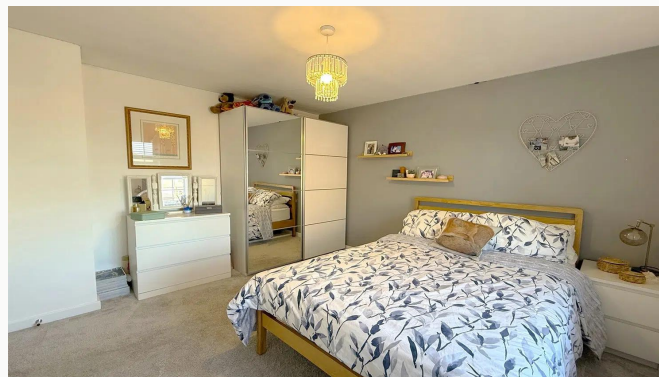
Master Bedroom



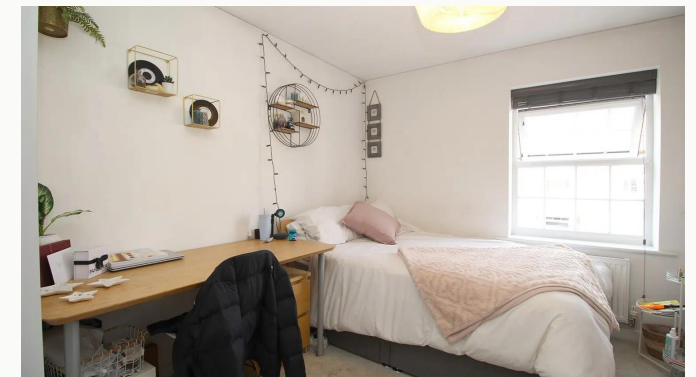
Master Bedroom



Ensuite



Bedroom Two



Bedroom Three



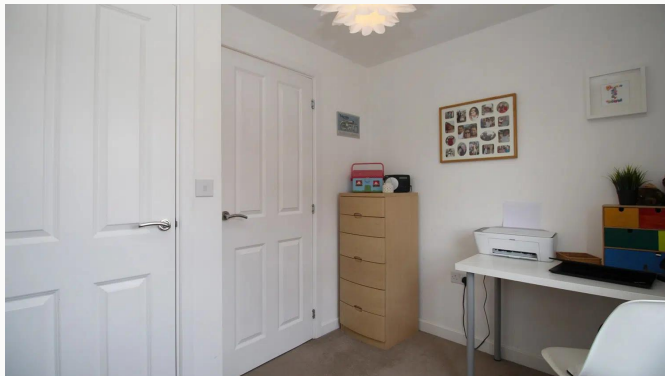
Bedroom Three



Bedroom Three



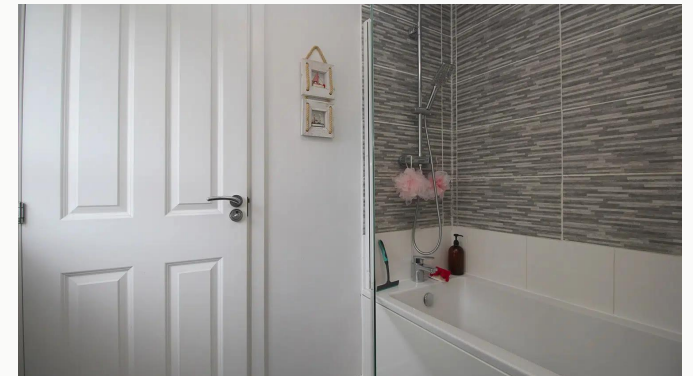
Bedroom Four



Bedroom Four



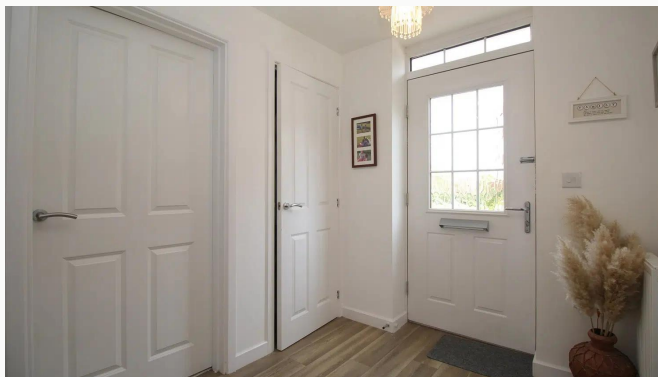
Bathroom



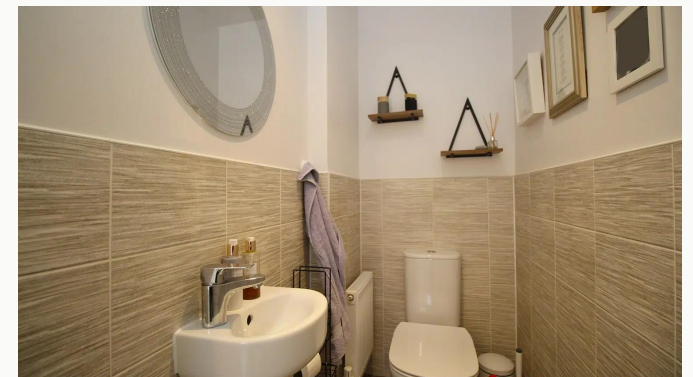
Bathroom



Landing



Hallway



Water Closet





Garden



Garden



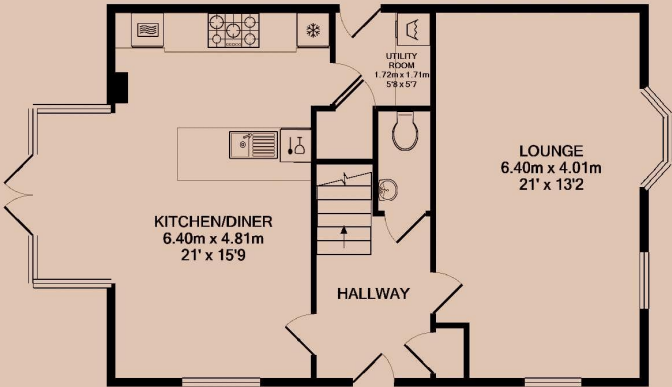
Garden



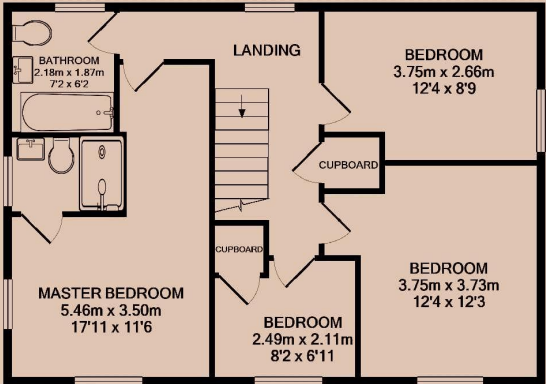
Driveway / Garage



<b>Available</b> From 30/08/2025	<b>Comes</b> Unfurnished	<b>Bedrooms</b> 4	<b>Receptions</b> 1	<b>Bathrooms</b> 2	<b>Parking</b> Garage	<b>Postcode</b> LE11 2AY
<b>Rent</b> £1,850 pcm	<b>Deposit</b> £2,130	<b>EPC</b> 85   B	<b>Council Tax Band</b> E	<b>ID</b> #16605	<b>Updated</b> 15/07/2025	



GROUND FLOOR



1ST FLOOR



# *Have a property like this? Let's work together.*

Design and marketing are at the heart of our approach. With most people now looking for property online, we can get our clients' properties in front of as many people as the most prominent national agents. Where we differ is in the quality of our work. We create stunning digital particulars that highlight the individual attributes of every property we market, with videos and floor plans as standard.



**OUR OFFICE**  
7 Biggin Street  
Loughborough, LE11 1UA

**CONTACT US**  
01509 320 320  
let@huntleys.net

